

Recombinant Human Gli1 protein ab152427

1 图像

| 描述 | |
|-----------|---|
| 产品名称 | 重组人Gli1蛋白 |
| 表达系统 | Wheat germ |
| Accession | <u>P08151</u> |
| 蛋白长度 | Protein fragment |
| 无动物成分 | No |
| 性质 | Recombinant |
| 种属 | Human |
| 序列 | GPLPRAPSISTVEPKREREGGPIREESRLTVPEGAMKPQPSP GAQSSCSS DHSPAGSAANTDSGVEMTGNAGGSTEDLSSLDEGPCIAGTGL STLRLEN |
| 预测分子量 | 37 kDa including tags |
| 氨基酸 | 401 to 500 |

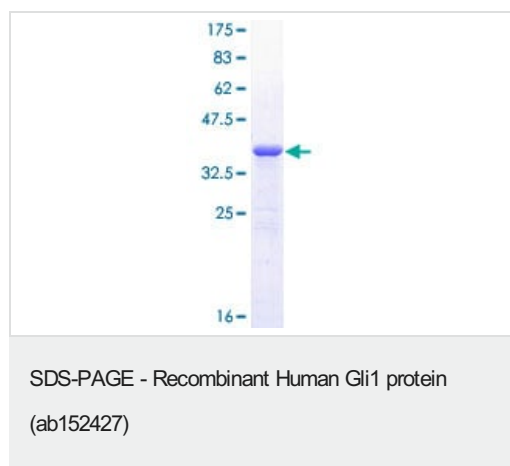
| 技术指标 | |
|--|-----------------------------------|
| Our Abpromise guarantee covers the use of ab152427 in the following tested applications. | |
| The application notes include recommended starting dilutions; optimal dilutions/concentrations should be determined by the end user. | |
| 应用 | ELISA SDS-PAGE Western blot |
| 形式 | Liquid |
| 补充说明 | |

| 制备和贮存 | |
|--------|--|
| 稳定性和存储 | Shipped on dry ice. Upon delivery aliquot and store at -80°C. Avoid freeze / thaw cycles. pH: 8.00 Constituents: 0.31% Glutathione, 0.79% Tris HCl |

常规信息

| | |
|-------|--|
| 功能 | Acts as a transcriptional activator. May regulate the transcription of specific genes during normal development. May play a role in craniofacial development and digital development, as well as development of the central nervous system and gastrointestinal tract. Mediates SHH signaling and thus cell proliferation and differentiation. |
| 组织特异性 | Testis, myometrium and fallopian tube. Also expressed in the brain with highest expression in the cerebellum, optic nerve and olfactory tract. |
| 序列相似性 | Belongs to the GLI C2H2-type zinc-finger protein family. Contains 5 C2H2-type zinc fingers. |
| 翻译后修饰 | Phosphorylated in vitro by ULK3. |
| 细胞定位 | Cytoplasm. Nucleus. Tethered in the cytoplasm by binding to SUFU. Activation and translocation to the nucleus is promoted by interaction with STK36. Phosphorylation by ULK3 may promote nuclear localization. Translocation to the nucleus is promoted by interaction with ZIC1. |

图片



12.5% SDS-PAGE analysis of ab152427 stained with Coomassie Blue.

Please note: All products are "FOR RESEARCH USE ONLY. NOT FOR USE IN DIAGNOSTIC PROCEDURES"

Our Abpromise to you: Quality guaranteed and expert technical support

- Replacement or refund for products not performing as stated on the datasheet
- Valid for 12 months from date of delivery
- Response to your inquiry within 24 hours
- We provide support in Chinese, English, French, German, Japanese and Spanish
- Extensive multi-media technical resources to help you
- We investigate all quality concerns to ensure our products perform to the highest standards

If the product does not perform as described on this datasheet, we will offer a refund or replacement. For full details of the Abpromise, please visit <https://www.abcam.cn/abpromise> or contact our technical team.

Terms and conditions

- Guarantee only valid for products bought direct from Abcam or one of our authorized distributors