

# Recombinant Human GLEPP1/PTPRO protein ab114815

### 1 图像

#### 描述

产品名称	重组人GLEPP1/PTPRO蛋白
表达系统	Wheat germ
Accession	<u><a href="#">Q16827-5</a></u>
蛋白长度	Full length protein
无动物成分	No
性质	Recombinant
种属	Human
序列	MGHLPTGIHGARRLLPLLWLFVLFKNATAFHVTVQDDNNIVV SLEASDVI SPASVYVVKITGESKNYFFEFEEFNSTLPPPVIKASYHGLY YIITLVVV NGNVVTKPSRSITVLTkPLPVTSVSIYDYKPSPETGVLFEIH YPEKYNVF TRVNISYWEGKDFRTMLYKDFFKGKTVFNHWLPGMCYSNITF QLVSEATF NKSTLVEYSGVSHEPKQHRTAPYPPQNISVRIVNLNKNWEE QSGNFPEE SFMRSQDTIGKEKLFHFTEETPEIPSGNISSGWPDFNSSDYE TTSQPYWW DSASAAPESSEDEFVSVLPMYENNSTLSETEKSTSGSFSFFP VQMILTWL PPKPPTAFDGFHIIHIEREENFTEYLMVDEEAHEFVAELKEPG KYKLSVTT FSSSGSCETRKSQSAKSLSFYISPSGEWIEELTEKPQHVS VH VLSSTTAL MSWTSSQENYNSTIVSVVSLTCQKQKESQRLEKQYCTQVNSS KPIIENLV PGAQYQVVIYLRKGPLIGPPSDPVTFAIVPTGIKDLMLYPLG PTAVVLSW TRPYLGVFRKYVEMFYFNPATMTSEWTTYEIAATVSLTAS VVIFP
预测分子量	92 kDa including tags
氨基酸	1 to 598

## 技术指标

---

Our **Abpromise guarantee** covers the use of **ab114815** in the following tested applications.

The application notes include recommended starting dilutions; optimal dilutions/concentrations should be determined by the end user.

应用	ELISA SDS-PAGE Western blot
形式	Liquid
补充说明	This product was previously labelled as GLEPP1.

## 制备和贮存

---

稳定性和存储	Shipped on dry ice. Upon delivery aliquot and store at -80°C. Avoid freeze / thaw cycles. pH: 8.00 Constituents: 0.3% Glutathione, 0.79% Tris HCl
--------	---

## 常规信息

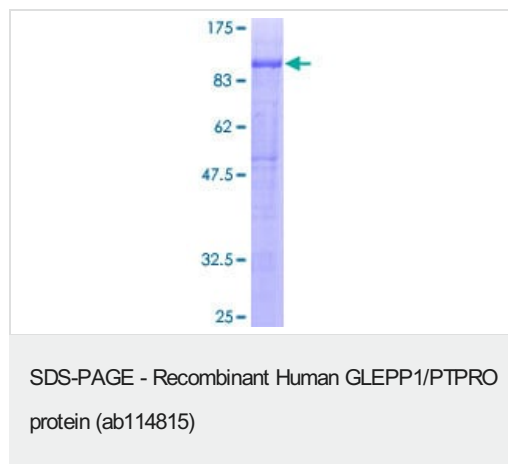
---

功能	Possesses tyrosine phosphatase activity.
组织特异性	Glomerulus of kidney. Also detected in brain, lung and placenta.
序列相似性	Belongs to the protein-tyrosine phosphatase family. Receptor class 3 subfamily. Contains 8 fibronectin type-III domains. Contains 1 tyrosine-protein phosphatase domain.
细胞定位	Membrane.

---

## 图片

---



12.5% SDS-PAGE Stained with Coomassie Blue

**Please note:** All products are "FOR RESEARCH USE ONLY. NOT FOR USE IN DIAGNOSTIC PROCEDURES"

## **Our Abpromise to you: Quality guaranteed and expert technical support**

---

- Replacement or refund for products not performing as stated on the datasheet
- Valid for 12 months from date of delivery
- Response to your inquiry within 24 hours
  
- We provide support in Chinese, English, French, German, Japanese and Spanish
- Extensive multi-media technical resources to help you
- We investigate all quality concerns to ensure our products perform to the highest standards

If the product does not perform as described on this datasheet, we will offer a refund or replacement. For full details of the Abpromise, please visit <https://www.abcam.cn/abpromise> or contact our technical team.

## **Terms and conditions**

---

- Guarantee only valid for products bought direct from Abcam or one of our authorized distributors