

Recombinant Human GATM protein ab123149

1 图像

描述

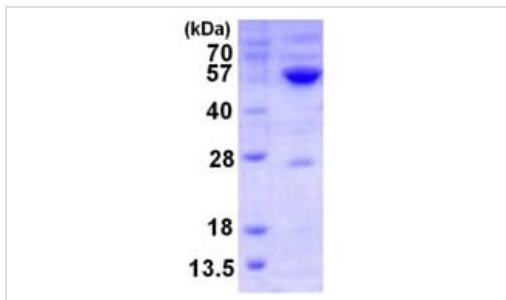
产品名称	重组人GATM蛋白
纯度	> 90 % SDS-PAGE. ab123149 was purified using conventional chromatography.
表达系统	Escherichia coli
Accession	<u>P50440</u>
蛋白长度	Full length protein
无动物成分	No
性质	Recombinant
种属	Human
序列	<pre> MGSSHHHHHSSGLVPRGSHMGSMSTQAATASSRNSCAADDK ATEPLPKD CPVSSYNEWDPLEEIVGRAENACVPPFTIEVKANTYEKYWP FYQKQGGH YFPKDHLKKAVAEIEEMCNILKTEGVTVRRPDPIDWSLKYKT PDFESTGL YSAMPRDILIVVGNEIIEAPMAWRSRFFEYRAYRSIIKDYFH RGAKWTTA PKPTMADELYNQDYPIHSVEDRHKLAAQGKFVTTEFEPCFDA ADFIRAGR DIFAQRSQVTNYLGIEWMRRHLAPDYRVHIISFKDPNPMHID ATFNIIGP GIVLSNPDRPCHQIDLFKKAGWTIITPPTPIIPDDHPLWMSS KWLSMNVL MLDEKRMVDANEVPIQKMFEEKLGITTIKVNIRNANSLGGGF HCWTCDVR RRGTLQSYLD </pre>
预测分子量	47 kDa including tags
氨基酸	38 to 423
标签	His tag N-Terminus

技术指标

Our **Abpromise guarantee** covers the use of **ab123149** in the following tested applications.

The application notes include recommended starting dilutions; optimal dilutions/concentrations should be determined by the end user.

应用	SDS-PAGE Mass Spectrometry
质谱法	MALDI-TOF
形式	Liquid
制备和贮存	
稳定性和存储	Shipped at 4°C. Store at +4°C short term (1-2 weeks). Upon delivery aliquot. Store at -20°C or -80°C. Avoid freeze / thaw cycle. pH: 8.00 Constituents: 0.03% DTT, 0.32% Tris HCl, 10% Glycerol (glycerin, glycerine), 1.17% Sodium chloride
常规信息	
功能	Catalyzes the biosynthesis of guanidinoacetate, the immediate precursor of creatine. Creatine plays a vital role in energy metabolism in muscle tissues. May play a role in embryonic and central nervous system development. May be involved in the response to heart failure by elevating local creatine synthesis.
组织特异性	Expressed in brain, heart, kidney, liver, lung, salivary gland and skeletal muscle tissue, with the highest expression in kidney. Biallelically expressed in placenta and fetal tissues.
通路	Amine and polyamine biosynthesis; creatine biosynthesis; creatine from L-arginine and glycine: step 1/2.
疾病相关	Defects in GATM are the cause of arginine:glycine amidinotransferase deficiency (AGAT deficiency) [MIM:612718]. AGAT deficiency is an autosomal recessive disorder characterized by developmental delay/regression, mental retardation, severe disturbance of expressive and cognitive speech, and severe depletion of creatine/phosphocreatine in the brain.
序列相似性	Belongs to the amidinotransferase family.
结构域	One chain folds into a compact single domain composed of repeating units, five beta-beta-alpha-beta modules, which surround the central active site.
细胞定位	Mitochondrion inner membrane. Cytoplasm. The mitochondrial form is found in the intermembrane space probably attached to the outer side of the inner membrane.
图片	



15% SDS PAGE, 3 µg of ab123149 loaded.

SDS-PAGE - Recombinant Human GATM protein
(ab123149)

Please note: All products are "FOR RESEARCH USE ONLY. NOT FOR USE IN DIAGNOSTIC PROCEDURES"

Our Abpromise to you: Quality guaranteed and expert technical support

- Replacement or refund for products not performing as stated on the datasheet
- Valid for 12 months from date of delivery
- Response to your inquiry within 24 hours
- We provide support in Chinese, English, French, German, Japanese and Spanish
- Extensive multi-media technical resources to help you
- We investigate all quality concerns to ensure our products perform to the highest standards

If the product does not perform as described on this datasheet, we will offer a refund or replacement. For full details of the Abpromise, please visit <https://www.abcam.cn/abpromise> or contact our technical team.

Terms and conditions

- Guarantee only valid for products bought direct from Abcam or one of our authorized distributors