

Recombinant Human GATA4 protein ab112289

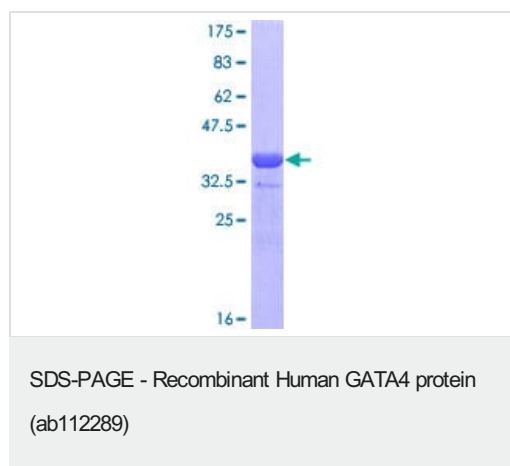
1 图像

描述	
产品名称	重组人GATA4蛋白
生物活性	useful for Antibody Production and Protein Array
表达系统	Wheat germ
Accession	<u>P43694</u>
蛋白长度	Protein fragment
无动物成分	No
性质	Recombinant
种属	Human
序列	ASGASSNSSNATTSSSEEMRPIKTEPGLSSHYGHSSSVSQTF SVSAMSGH GPSIHPVLSALKLSPQGYASPVSPQTSSKQDSWNSLVLAD SHGDIITA
预测分子量	37 kDa
氨基酸	343 to 442
技术指标	
Our <u>Abpromise guarantee</u> covers the use of ab112289 in the following tested applications. The application notes include recommended starting dilutions; optimal dilutions/concentrations should be determined by the end user.	
应用	ELISA SDS-PAGE Western blot
形式	Liquid
补充说明	useful for Antibody Production and Protein Array
制备和贮存	
稳定性和存储	Shipped on dry ice. Upon delivery aliquot and store at -80°C. Avoid freeze / thaw cycles. pH: 8.00 Constituents: 0.31% Glutathione, 0.79% Tris HCl

常规信息

功能	Transcriptional activator that binds to the consensus sequence 5'-AGATAG-3' and plays a key role in cardiac development (PubMed:24000169). Involved in bone morphogenetic protein (BMP)-mediated induction of cardiac-specific gene expression (By similarity). Binds to BMP response element (BMPRE) DNA sequences within cardiac activating regions (By similarity). Acts as a transcriptional activator of ANF in cooperation with NKX2-5 (By similarity). Promotes cardiac myocyte enlargement (PubMed:20081228). Required during testicular development (PubMed:21220346). May play a role in sphingolipid signaling by regulating the expression of sphingosine-1-phosphate degrading enzyme, sphingosine-1-phosphate lyase (PubMed:15734735).
疾病相关	Atrial septal defect 2 Ventricular septal defect 1 Tetralogy of Fallot Atrioventricular septal defect 4 Testicular anomalies with or without congenital heart disease GATA4 mutations can predispose to dilated cardiomyopathy (CMD), a disorder characterized by ventricular dilation and impaired systolic function, resulting in congestive heart failure and arrhythmia. Patients are at risk of premature death.
序列相似性	Contains 2 GATA-type zinc fingers.
翻译后修饰	Methylation at Lys-300 attenuates transcriptional activity.
细胞定位	Nucleus.

图片



ab112289 analysed on a 12.5% SDS-PAGE stained with Coomassie Blue.

Please note: All products are "FOR RESEARCH USE ONLY. NOT FOR USE IN DIAGNOSTIC PROCEDURES"

Our Abpromise to you: Quality guaranteed and expert technical support

- Replacement or refund for products not performing as stated on the datasheet
- Valid for 12 months from date of delivery
- Response to your inquiry within 24 hours

- We provide support in Chinese, English, French, German, Japanese and Spanish
- Extensive multi-media technical resources to help you
- We investigate all quality concerns to ensure our products perform to the highest standards

If the product does not perform as described on this datasheet, we will offer a refund or replacement. For full details of the Abpromise, please visit <https://www.abcam.cn/abpromise> or contact our technical team.

Terms and conditions

- Guarantee only valid for products bought direct from Abcam or one of our authorized distributors