

Recombinant Human gamma Catenin protein ab114407

1 图像

描述

产品名称	重组人gamma Catenin蛋白
表达系统	Wheat germ
Accession	<u>Q15151</u>
蛋白长度	Full length protein
无动物成分	No
性质	Recombinant
种属	Human
序列	

MEVMNLMEQPIKVTIEWQTTYTYDSGIHSGANTCVPSVSSKGI
MEEDEACG
RQYTLKKTTTYTQGVPPSQGDLEYQMSTTARAKRVREAMCPG
VSGEDSSL
LLATQVEGQATNLQRLAEPSQLLKSIVHLINYQDDAELATR
ALPELTKL
LNDEDPVVVTKAAMIVNQLSKKEASRRALMGSPQLVAAVVRT
MQNTSDLD
TARCTTSILHNLSSHREGLLAIFKSGGIPALVRMLSSPVESV
LFYAITTL
HNLLLYQEGAKMAVRLADGLQKMVPLLNNKPKFLAITTDCL
QLLAYGNQ
ESKLIILANGGPQALVQIMRNYSYEKLLWTTSRVLKVLVSVCP
SNKPAIVE
AGGMQALGKHLTSNSPRLVQNCLWTLRNLSDVATKQEGLESV
LKILVNQL
SVDDVNVLTCATGTLSNLTNNKNTLVTQNSGVEALIHAI
LRAGDKDD
ITEPAVCALRHLSRHPEAEMAQNSVRLNYGIPAIVKLLNQ
NQWPLVKA
TIGLIRNLALCPANHAPLQEAIVPRLVQLLVKAHQDAQRHV
AAGTQQPY
TDGVRMEEIVEGCTGALHILARDPMNRMEIFRLNTIPLFVQP
LYSSVENI
QRVAAGALCELAQDKEAADAIDAEGASAPLMELLHSRNEGTA
TYAAAVLF
RISEDKNPDYRKRVSVELTNSLFKHDPAWEAAQSMIPINEP
YGDDLDAT

预测分子量 108 kDa including tags
氨基酸 1 to 745

技术指标

Our **Abpromise guarantee** covers the use of **ab114407** in the following tested applications.

The application notes include recommended starting dilutions; optimal dilutions/concentrations should be determined by the end user.

应用 SDS-PAGE
Western blot
ELISA

形式 Liquid

补充说明

制备和贮存

稳定性和存储 Shipped on dry ice. Upon delivery aliquot and store at -80°C. Avoid freeze / thaw cycles.
pH: 8.00
Constituents: 0.3% Glutathione, 0.79% Tris HCl

常规信息

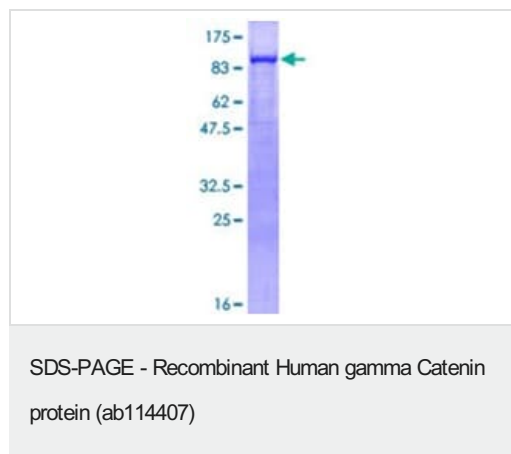
功能 Common junctional plaque protein. The membrane-associated plaques are architectural elements in an important strategic position to influence the arrangement and function of both the cytoskeleton and the cells within the tissue. The presence of plakoglobin in both the desmosomes and in the intermediate junctions suggests that it plays a central role in the structure and function of submembranous plaques. Acts as a substrate for VE-PTP and is required by it to stimulate VE-cadherin function in endothelial cells. Can replace beta-catenin in E-cadherin/catenin adhesion complexes which are proposed to couple cadherins to the actin cytoskeleton.

疾病相关 Defects in JUP are the cause of Naxos disease (NXD) [MIM:601214]. NXD is an autosomal recessive disorder combining diffuse non-epidermolytic palmoplantar keratoderma with arrhythmogenic right ventricular dysplasia/cardiomyopathy and woolly hair.
Defects in JUP are the cause of familial arrhythmogenic right ventricular dysplasia type 12 (ARVD12) [MIM:611528]; also called arrhythmogenic right ventricular cardiomyopathy 12 (ARVC12). ARVD is an autosomal dominant disease characterized by partial degeneration of the myocardium of the right ventricle, electrical instability, and sudden death. It is clinically defined by electrocardiographic and angiographic criteria; pathologic findings, replacement of ventricular myocardium with fatty and fibrous elements, preferentially involve the right ventricular free wall.

序列相似性 Belongs to the beta-catenin family.
Contains 9 ARM repeats.

细胞定位 Cell junction > adherens junction. Cell junction > desmosome. Cytoplasm > cytoskeleton.
Membrane. Cytoplasmic in a soluble and membrane-associated form.

图片



12.5% SDS-PAGE analysis of ab114407, stained with Coomassie Blue.

Please note: All products are "FOR RESEARCH USE ONLY. NOT FOR USE IN DIAGNOSTIC PROCEDURES"

Our Abpromise to you: Quality guaranteed and expert technical support

- Replacement or refund for products not performing as stated on the datasheet
- Valid for 12 months from date of delivery
- Response to your inquiry within 24 hours
- We provide support in Chinese, English, French, German, Japanese and Spanish
- Extensive multi-media technical resources to help you
- We investigate all quality concerns to ensure our products perform to the highest standards

If the product does not perform as described on this datasheet, we will offer a refund or replacement. For full details of the Abpromise, please visit <https://www.abcam.cn/abpromise> or contact our technical team.

Terms and conditions

- Guarantee only valid for products bought direct from Abcam or one of our authorized distributors