

Recombinant Human GABA B Receptor 1 protein ab112287

1 图像

描述	
产品名称	重组人GABA B Receptor 1蛋白
表达系统	Wheat germ
Accession	<u>Q9UBS5-2</u>
蛋白长度	Protein fragment
无动物成分	No
性质	Recombinant
种属	Human
序列	AVYIGALFPMSSGGWPGGQACQPAVEMALEDVNSRRDILPDYE LKLIHHDS KCDPGQATKYLVELLYNDPIKIILMPGCSSVSTLVAEAARMW NLIVLSYG
预测分子量	37 kDa
氨基酸	52 to 151
标签	GST tag N-Terminus
技术指标	
Our Abpromise guarantee covers the use of ab112287 in the following tested applications.	
The application notes include recommended starting dilutions; optimal dilutions/concentrations should be determined by the end user.	
应用	SDS-PAGE Western blot ELISA
形式	Liquid
制备和贮存	
稳定性和存储	Shipped on dry ice. Upon delivery aliquot and store at -80°C. Avoid freeze / thaw cycles. pH: 8.00 Constituents: 0.31% Glutathione, 0.79% Tris HCl Glutathione is reduced

常规信息

功能

Receptor for GABA. The activity of this receptor is mediated by G-proteins that inhibit adenylyl cyclase activity, stimulates phospholipase A2, activates potassium channels, inactivates voltage-dependent calcium-channels and modulates inositol phospholipids hydrolysis. Plays a critical role in the fine-tuning of inhibitory synaptic transmission. Pre-synaptic GABA-B-R inhibit neurotransmitter release by down-regulating high-voltage activated calcium channels, whereas postsynaptic GABA-B-R decrease neuronal excitability by activating a prominent inwardly rectifying potassium (Kir) conductance that underlies the late inhibitory postsynaptic potentials. Not only implicated in synaptic inhibition but also in hippocampal long-term potentiation, slow wave sleep, muscle relaxation and antinociception. Activated by (-)-baclofen, cgp27492 and blocked by phaclofen.

Isoform 1E function may be to regulate the availability of functional GABA-B-R1A/GABA-B-R2 heterodimers by competing for GABA-B-R2 dimerization. This could explain the observation that certain small molecule ligands exhibit differential affinity for central versus peripheral sites.

组织特异性

Highly expressed in brain and weakly in heart, small intestine and uterus. Isoform 1A is mostly expressed in granular cell and molecular layer. Isoform 1B is mostly expressed in Purkinje cells. Isoform 1E is predominantly expressed in peripheral tissues as kidney, lung, trachea, colon, small intestine, stomach, bone marrow, thymus and mammary gland.

序列相似性

Belongs to the G-protein coupled receptor 3 family. GABA-B receptor subfamily. Contains 2 Sushi (CCP/SCR) domains.

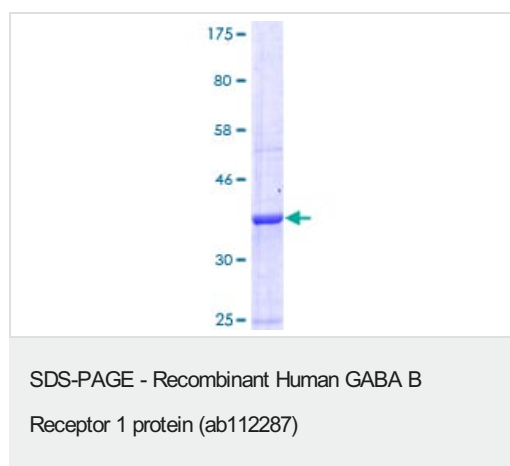
结构域

Alpha-helical parts of the C-terminal intracellular region mediate heterodimeric interaction with GABA-B receptor 2. The linker region between the transmembrane domain 3 (TM3) and the transmembrane domain 4 (TM4) probably play a role in the specificity for G-protein coupling.

细胞定位

Secreted and Cell membrane. Cell junction > synapse > postsynaptic cell membrane. Colocalizes with ATF4 in hippocampal neuron dendritic membranes (By similarity). Moreover coexpression of GABA-B-R1 and GABA-B-R2 appears to be a prerequisite for maturation and transport of GABA-B-R1 to the plasma membrane.

图片



ab112287 analysed on a 12.5% SDS-PAGE stained with Coomassie Blue.

Please note: All products are "FOR RESEARCH USE ONLY. NOT FOR USE IN DIAGNOSTIC PROCEDURES"

Our Abpromise to you: Quality guaranteed and expert technical support

- Replacement or refund for products not performing as stated on the datasheet
- Valid for 12 months from date of delivery
- Response to your inquiry within 24 hours

- We provide support in Chinese, English, French, German, Japanese and Spanish
- Extensive multi-media technical resources to help you
- We investigate all quality concerns to ensure our products perform to the highest standards

If the product does not perform as described on this datasheet, we will offer a refund or replacement. For full details of the Abpromise, please visit <https://www.abcam.cn/abpromise> or contact our technical team.

Terms and conditions

- Guarantee only valid for products bought direct from Abcam or one of our authorized distributors