

Recombinant human FKBP6 protein ab95497

1 图像

描述	
产品名称	重组人FKBP6蛋白
生物活性	<p>Specific activity is > 190 nmoles/min/mg, and is defined as the amount of enzyme that cleaves 1 μmole of suc-AAPF-pNA per minute at 25°C in Tris-Hcl pH8.0 using chymotrypsin.</p> <p>Activity Assay</p> <p>Prepare 170 μl assay buffer into a suitable container and pre-chill on ice before use: The final concentrations are 200 mM Tris-Hcl, pH 8.0, and 20nM chymotrypsin.</p> <p>Add 10 μl of recombinant FKBP6 protein with 1 μg in assay buffer.</p> <p>Mix by inversion and equilibrate to 1°C and monitor the A405nm until the value is constant using a spectrophotometer.</p> <p>Add 20 μl pre-chilled 5mM suc-AAFP-pNA. (Substrate was dissolved in TFE that contained 460mM LiCl to a concentration of 3 mM)</p> <p>Record the increase in A405 nm for 30 minutes at 25°C.</p>
纯度	<p>> 95 % SDS-PAGE.</p> <p>ab95497 is purified using conventional chromatography techniques.</p>
表达系统	Escherichia coli
Accession	<u>O75344</u>
蛋白长度	Full length protein
无动物成分	No
性质	Recombinant
种属	Human
序列	<p>MGSSHHHHHSSGLVPRGSHMGGSalnQGVLEGDdAPGQS LYERLSQRML DISGDRGVLKDVIREGAGDLVAPDASVLVKYSGYLEHMDRPF DSNYFRKT PRLMKLGEDITLWGMELGLLSMRRGELARFLFKPNYAYGTLG CPPLIPPN TTVLFEIELLDFLDCAESDKFCALSAEQDQFPLQKVLKVAA TEREFGNY LFRQNRFYDAKVRYKRALLLRRRSAPPEEQHLVEAAKLPVL LNLSFTYL KLD RPTIALCYGEQALIIDQKNAKALFRCGQACLLLTEYQKA RDFLVRAQ KEQPFNHDINNELKKLASCYRDYVDKEKEMWHRMFAPCGDGS TAGES</p>

预测分子量	39 kDa including tags
标签	His tag N-Terminus

技术指标

Our **Abpromise guarantee** covers the use of **ab95497** in the following tested applications.

The application notes include recommended starting dilutions; optimal dilutions/concentrations should be determined by the end user.

应用	SDS-PAGE
	Mass Spectrometry
	Functional Studies

质谱法	MALDI-TOF
-----	-----------

形式	Liquid
----	--------

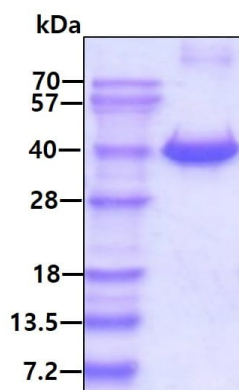
制备和贮存

稳定性和存储	<p>Shipped at 4°C. Upon delivery aliquot and store at -20°C or -80°C. Avoid repeated freeze / thaw cycles.</p> <p>pH: 8.00</p> <p>Constituents: 0.0154% (R*,R*)-1,4-Dimercaptobutan-2,3-diol, 0.316% Tris HCl, 0.0292% EDTA, 40% Glycerol (glycerin, glycerine), 1.1688% Sodium chloride</p> <p>This product is an active protein and may elicit a biological response in vivo, handle with caution.</p>
--------	--

常规信息

功能	PPlases accelerate the folding of proteins.
组织特异性	Detected in all tissues examined, with higher expression in testis, heart, skeletal muscle, liver, and kidney.
疾病相关	Note=FKBP6 is located in the Williams-Beuren syndrome (WBS) critical region. WBS results from a hemizygous deletion of several genes on chromosome 7q11.23, thought to arise as a consequence of unequal crossing over between highly homologous low-copy repeat sequences flanking the deleted region. Haploinsufficiency of FKBP6 may be the cause of certain cardiovascular and musculo-skeletal abnormalities observed in the disease.
序列相似性	<p>Contains 1 PPlase FKBP-type domain.</p> <p>Contains 3 TPR repeats.</p>

图片



SDS-PAGE - Recombinant human FKBP6 protein
(ab95497)

15% SDS-PAGE showing ab95497 at approximately 39.3kDa (3 μ g) under reducing condition and visualized by coomassie blue stain.

Please note: All products are "FOR RESEARCH USE ONLY. NOT FOR USE IN DIAGNOSTIC PROCEDURES"

Our Abpromise to you: Quality guaranteed and expert technical support

- Replacement or refund for products not performing as stated on the datasheet
- Valid for 12 months from date of delivery
- Response to your inquiry within 24 hours
- We provide support in Chinese, English, French, German, Japanese and Spanish
- Extensive multi-media technical resources to help you
- We investigate all quality concerns to ensure our products perform to the highest standards

If the product does not perform as described on this datasheet, we will offer a refund or replacement. For full details of the Abpromise, please visit <https://www.abcam.cn/abpromise> or contact our technical team.

Terms and conditions

- Guarantee only valid for products bought direct from Abcam or one of our authorized distributors