

Recombinant Human Fibulin 1 protein ab114782

1 图像

描述

产品名称	重组人Fibulin 1蛋白
表达系统	Wheat germ
Accession	<u>P23142-4</u>
蛋白长度	Full length protein
无动物成分	No
性质	Recombinant
种属	Human
序列	

MERAAPSRRVPLQLLLLGGALLAAGVDADVLL EACCADGHR
MATHQKDC
SLPYATESKECRMVQECCHSQLEELHCATGISLANEQDRCA
TPHGDNAS
LEATFVKRCCHCCLLGRAAQAQGSCEYSLMVG YQCGQVFRA
CCVKSQET
GDLDVGGLQETDKIIEVEEEQEDPYLNDRCRGGGPCKQQCRD
TGDEVVCS
CFVGYQLLSDGVSCEDVNECITGSHSCLRGESCINTVGSFRC
QRDSSCGT
GYELTEDNSCKDIDECESGIHNCLPDFICQNTLGSFRCRPKL
QCKSGFIQ
DALGNCIDINECLISAPCPIGHTCINTEGSYTCQKNVPNCG
RGYHLNEE
GTRCVDVDECAPPAEPCGKGHRCVNSPGSFRCECKTGYFFDG
ISRMCDV
NECQRYPGRLCGHKCENTLGSYLCSCSVGFRLSVDGRSCEDI
NECSSPC
SQECANVYGSYQCYCRRGYQLSDVDGVT CEDIDECALPTGGH
ICSYRCIN
IPGSFQCSCPSSGYRLAPNGSNCQDIDECVTGIHNCSINETC
FNIQGGFR
CLAFECPENYRRSAATRCERLPCHENRECSKPLRITYYHLS
FPTNIQAP
AVVFRMGPSAVPGDSMQLAITGGNEEGFFTTTRKVS PHSGVV
ALTKPVPE PRDLLLTVKMDLSRHGTVSSFVAKLFIFVSAEL

预测分子量

101 kDa including tags

技术指标

Our **Abpromise guarantee** covers the use of **ab114782** in the following tested applications.

The application notes include recommended starting dilutions; optimal dilutions/concentrations should be determined by the end user.

应用 ELISA
Western blot
SDS-PAGE

形式 Liquid

制备和贮存

稳定性和存储 Shipped on dry ice. Upon delivery aliquot and store at -80°C. Avoid freeze / thaw cycles.
pH: 8.00
Constituents: 0.3% Glutathione, 0.79% Tris HCl

常规信息

功能 Incorporated into fibronectin-containing matrix fibers. May play a role in cell adhesion and migration along protein fibers within the extracellular matrix (ECM). Could be important for certain developmental processes and contribute to the supramolecular organization of ECM architecture, in particular to those of basement membranes. Has been implicated in a role in cellular transformation and tumor invasion, it appears to be a tumor suppressor. May play a role in haemostasis and thrombosis owing to its ability to bind fibrinogen and incorporate into clots. Could play a significant role in modulating the neurotrophic activities of APP, particularly soluble APP.

组织特异性 Isoform A and isoform B are only expressed in placenta. Isoform C and isoform D are expressed in a variety of tissues and cultured cells.

疾病相关 Note=A chromosomal aberration involving FBLN1 is found in a complex type of synpolydactyly referred to as 3/3-prime/4 synpolydactyly associated with metacarpal and metatarsal synostoses. Reciprocal translocation t(12;22)(p11.2;q13.3) with C12orf2. Fibroblasts derived from a patient with synpolydactyly displayed alterations in the level of isoform D splice variant incorporated into the ECM and secreted into the conditioned culture medium. By contrast, the expression of isoform C was not perturbed in the patients fibroblasts. Furthermore, no aberrant polypeptides were detected in extracts of cultured patients fibroblasts. The translocation t(12;22) may result in haploinsufficiency of the isoform D splice variant, which could lead to the observed limb malformation.
Note=Elevated expression and altered processing of FBLN1 protein is associated with human breast cancer.

序列相似性 Belongs to the fibulin family.
Contains 3 anaphylatoxin-like domains.
Contains 9 EGF-like domains.

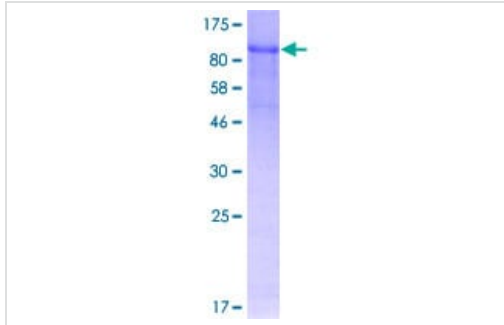
发展阶段 Widely expressed during embryonic development. Prominent in the matrix of the leptomeningeal anlage, in basement membranes of the neuroepithelium and the perineurium of peripheral nerves. In embryos of gestational week (gw) 4, staining was observed in the early mesenchymal bone

anlagen. In gw 6.5 and 8, all perichondrial structures showed expression but the chondrocytes themselves showed no staining. In gw 10, expression is prominent in the interterritorial matrix surrounding the hypertrophic chondrocytes.

细胞定位

Secreted > extracellular space > extracellular matrix.

图片



ab114782 analysed on a 12.5% SDS-PAGE gel stained with Coomassie Blue.

SDS-PAGE - Recombinant Human Fibulin 1 protein
(ab114782)

Please note: All products are "FOR RESEARCH USE ONLY. NOT FOR USE IN DIAGNOSTIC PROCEDURES"

Our Abpromise to you: Quality guaranteed and expert technical support

- Replacement or refund for products not performing as stated on the datasheet
- Valid for 12 months from date of delivery
- Response to your inquiry within 24 hours
- We provide support in Chinese, English, French, German, Japanese and Spanish
- Extensive multi-media technical resources to help you
- We investigate all quality concerns to ensure our products perform to the highest standards

If the product does not perform as described on this datasheet, we will offer a refund or replacement. For full details of the Abpromise, please visit <https://www.abcam.cn/abpromise> or contact our technical team.

Terms and conditions

- Guarantee only valid for products bought direct from Abcam or one of our authorized distributors