

Recombinant human Fibroblast activation protein, alpha ab79623

2 图像

描述

| | |
|-------|---|
| 产品名称 | 重组人Fibroblast activation蛋白, alpha |
| 生物活性 | Specific Activity: 10.2 pmol/min/μg. Assay Condition: 50 mM Tris-HCl (pH7.5), 10 mM MgCl ₂ , 1 mM MnCl ₂ , 5μM substrate (A-P-AMC), room temperature. |
| 纯度 | > 90 % SDS-PAGE. Affinity purified. |
| 表达系统 | Baculovirus infected Sf9 cells |
| 蛋白长度 | Protein fragment |
| 无动物成分 | No |
| 性质 | Recombinant |
| 种属 | Human |
| 氨基酸 | 29 to 760 |
| 标签 | His tag C-Terminus |

技术指标

Our **Abpromise guarantee** covers the use of **ab79623** in the following tested applications.

The application notes include recommended starting dilutions; optimal dilutions/concentrations should be determined by the end user.

| | |
|----|--------------------------------|
| 应用 | SDS-PAGE Functional Studies |
| 形式 | Liquid |

制备和贮存

| | |
|--------|---|
| 稳定性和存储 | Shipped on Dry Ice. Upon delivery aliquot. Store at -80°C. Avoid freeze / thaw cycle. pH: 8.00 Preservative: 1.36% Imidazole Constituents: 0.64% Tris HCl, 20% Glycerol (glycerin, glycerine), 0.64% Sodium chloride, 0.02% Potassium chloride This product is an active protein and may elicit a biological response in vivo, handle with caution. |
|--------|---|

常规信息

| | |
|-------|--|
| 功能 | In association with DPP4 is involved in the pericellular proteolysis of the extracellular matrix (ECM), the migration and invasion of endothelial cells into the ECM. May have a role in tissue remodeling during development and wound healing, and may contribute to invasiveness in malignant cancers. |
| 组织特异性 | Fibroblast specific. |
| 序列相似性 | Belongs to the peptidase S9B family. |
| 翻译后修饰 | N-glycosylated. The N-terminus may be blocked. |
| 细胞定位 | Cell membrane. Cell projection > lamellipodium membrane. Cell projection > invadopodium membrane. Found in cell surface lamellipodia, invadopodia and on shed vesicles. Colocalized with DPP4 in invadopodia and lamellipodia of migratory activated endothelial cells in collagenous matrix. Colocalized with DPP4 on endothelial cells of capillary-like microvessels but not large vessels within invasive breast ductal carcinoma. |

图片

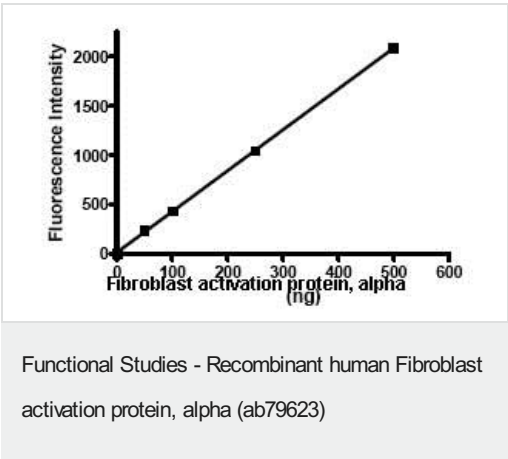
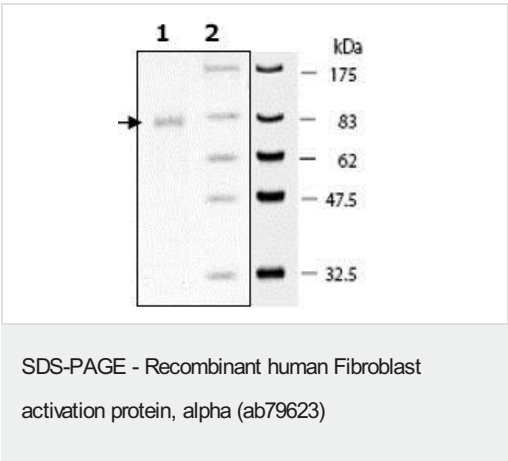


Image showing specific activity of ab79623.



SDS-PAGE showing 3ug ab79623 at approximately 85.5kDa.

Please note: All products are "FOR RESEARCH USE ONLY. NOT FOR USE IN DIAGNOSTIC PROCEDURES"

Our Abpromise to you: Quality guaranteed and expert technical support

- Replacement or refund for products not performing as stated on the datasheet
- Valid for 12 months from date of delivery
- Response to your inquiry within 24 hours

- We provide support in Chinese, English, French, German, Japanese and Spanish
- Extensive multi-media technical resources to help you
- We investigate all quality concerns to ensure our products perform to the highest standards

If the product does not perform as described on this datasheet, we will offer a refund or replacement. For full details of the Abpromise, please visit <https://www.abcam.cn/abpromise> or contact our technical team.

Terms and conditions

- Guarantee only valid for products bought direct from Abcam or one of our authorized distributors