

Product datasheet

Recombinant human FGF1 protein (Active) ab155608

2 图像

描述

产品名称	重组人FGF1蛋白(Active)
生物活性	Measured by its binding ability in a BLI assay. Loaded ab168696 on HIS1K Biosensor, can bind ab155608 with an affinity constant of 0.16 μ M as determined in BLI assay (ForteBio Octet Red96e).
纯度	> 98 % SDS-PAGE.
内毒素水平	< 1.000 Eu/ μ g
表达系统	Escherichia coli
Accession	<u>P05230</u>
蛋白长度	Full length protein
无动物成分	No
性质	Recombinant
种属	Human
序列	FNLPPGNYKKPKLLYCSNGGHFLRILPDGTVDGTRDRSDQHI QLQLSAES VGEVYIKSTE TGQYLAMDTDGLLYGSQTPNEECLFLERLEENHYNTYISKKH AEKNWFGV LKKNCSCKRG PRTHYGQKAILFLPLPVSSD
预测分子量	16 kDa
氨基酸	16 to 155
额外的序列信息	This product is the mature full length protein from aa 16 to 155. The propeptide is not included.

技术指标

Our **Abpromise guarantee** covers the use of **ab155608** in the following tested applications.

The application notes include recommended starting dilutions; optimal dilutions/concentrations should be determined by the end user.

应用	Functional Studies SDS-PAGE
形式	Lyophilized
补充说明	This product is stable after storage at: -20°C to -70°C for 12 months in lyophilized state;

-70 °C for 3 months under sterile conditions after reconstitution.

制备和贮存

稳定性和存储

Shipped at 4°C. Upon delivery aliquot. Store at -20°C or -80°C. Avoid freeze / thaw cycle.

pH: 7.40

Constituents: 95% PBS, 5% Trehalose

This product is an active protein and may elicit a biological response in vivo, handle with caution.

复溶

It is recommended to reconstitute the lyophilized protein in sterile deionized water to a final concentration of 200 ug/ml. Solubilize for 30 to 60 minutes at room temperature with occasional gentle mixing. Carrier protein (0.1% HSA or BSA) is strongly recommended for further dilution and long term storage.

常规信息

功能

The heparin-binding fibroblast growth factors play important roles in the regulation of cell survival, cell division, angiogenesis, cell differentiation and cell migration. They are potent mitogens in vitro.

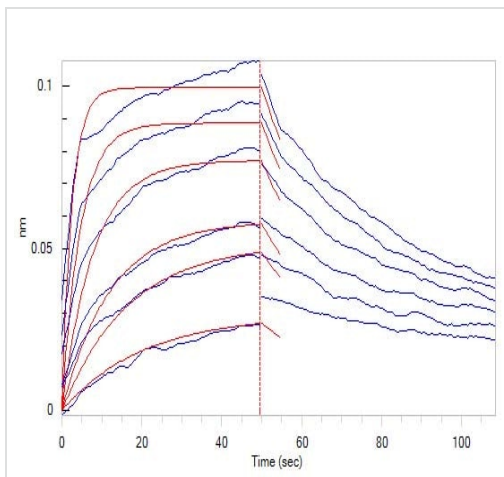
序列相似性

Belongs to the heparin-binding growth factors family.

细胞定位

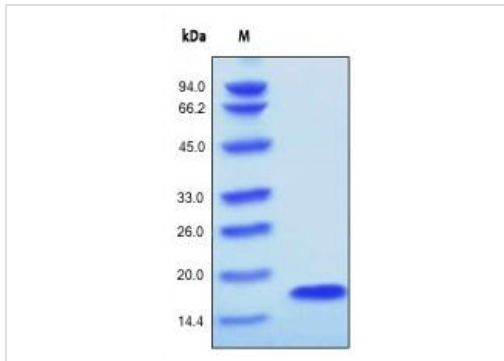
Secreted. Cytoplasm. Cytoplasm > cell cortex. Lacks a cleavable signal sequence. Within the cytoplasm, it is transported to the cell membrane and then secreted by a non-classical pathway that requires Cu(2+) ions and S100A13. Secreted in a complex with SYT1.

图片



Loaded **ab168696** on HIS1K Biosensor, can bind ab155608 with an affinity constant of 0.16 μM as determined in BLI assay (ForteBio Octet Red96e).

Functional Studies - Recombinant Human FGF1 protein (ab155608)



SDS-PAGE of reduced ab155608 stained overnight with Coomassie Blue.

SDS-PAGE - Recombinant human FGF1 protein (ab155608)

Please note: All products are "FOR RESEARCH USE ONLY. NOT FOR USE IN DIAGNOSTIC PROCEDURES"

Our Abpromise to you: Quality guaranteed and expert technical support

- Replacement or refund for products not performing as stated on the datasheet
- Valid for 12 months from date of delivery
- Response to your inquiry within 24 hours
- We provide support in Chinese, English, French, German, Japanese and Spanish
- Extensive multi-media technical resources to help you
- We investigate all quality concerns to ensure our products perform to the highest standards

If the product does not perform as described on this datasheet, we will offer a refund or replacement. For full details of the Abpromise, please visit <https://www.abcam.cn/abpromise> or contact our technical team.

Terms and conditions

- Guarantee only valid for products bought direct from Abcam or one of our authorized distributors