

Recombinant Human FATP1 protein ab132799

1 图像

描述

产品名称	重组人FATP1蛋白
表达系统	Wheat germ
Accession	<u>Q6PCB7</u>
蛋白长度	Full length protein
无动物成分	No
性质	Recombinant
种属	Human
序列	

MRAPGAGAASVVSLLALLWLLGLPWTWSAAAALGVYVSGSGWR
FLRIVCKT
ARRDLFGLSVLIRVRLELRRHQAGHTIPRIFAQAVVQRQPER
LALVDAGT
GECWTFAQLDAYSNAVANLFRQLGFAPGDVVAIFLEGRPEFV
GLWLGLAK
AGMEAALLNVNLRREPLAFCLGTSGAKALIFGGEMVAVAEV
SGHLGKSL
IKFCSGDLGPEGILPDTHLLDPLLKEASTAPLAQIPSKGMDD
RLFYIYTS
GTTGLPKAAIVVHSRYRMAAFGHHAYRMQAADVLYDCLPLY
HSAGNIIG
VGQCLIYGLTVVLRKKFSASRFWDDCIKYNCTVVQYIGEICR
YLLKQPVR
EAERRHRVRLAVGNLRLPAIWEEFTERFGVRQIGEFYGATEC
NCSIANMD
GKVGSCGFNSRILPHVYPIRLVKVNEDTMELLRDAQGLCIPC
QAGEPGLL
VGQINQQDPLRRFDGYVSESATSKKIAHSVFSKGDSAYLSGD
VLVMDELG
YMYFRDRSGDTFRWRGENVSTTEVEGVLSRLLGQTDVAVYGV
AVPGVEGK
AGMAAVADPHSLLDPNAIYQELQKVLAPYARPIFLRLLPQVD
TTGTFKIQ
KTRLQREGFDPRQTSDRLLFFLDLKQGHYLPNEAVYTRICSG
AFAL

预测分子量 98 kDa including tags

技术指标

Our **Abpromise guarantee** covers the use of **ab132799** in the following tested applications.

The application notes include recommended starting dilutions; optimal dilutions/concentrations should be determined by the end user.

应用	ELISA SDS-PAGE Western blot
形式	Liquid
补充说明	

制备和贮存

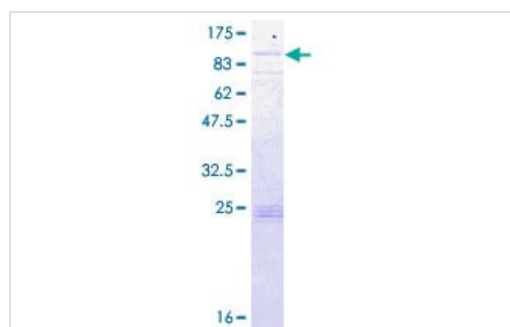
稳定性和存储	Shipped on dry ice. Upon delivery aliquot and store at -80°C. Avoid freeze / thaw cycles. pH: 8.00 Constituents: 0.31% Glutathione, 0.79% Tris HCl
--------	--

常规信息

相关性	SLC27A1 (Solute carrier family 27 member 1) is involved in translocation of long-chain fatty acids (LFCA) across the plasma membrane. SLC27A1 may act directly as a bona fide transporter, or alternatively, in a cytoplasmic or membrane-associated multimeric protein complex to trap and draw fatty acids towards accumulation. It also plays a pivotal role in regulating available LFCA substrates from exogenous sources in tissues undergoing high levels of beta-oxidation or triglyceride synthesis and may be involved in regulation of cholesterol metabolism.
-----	---

细胞定位	Cell membrane; Single-pass membrane protein. Intracytoplasmic membrane; Single-pass membrane protein. Cytoplasm. Note=Plasma membrane and intracellular membranes, at least in adipocytes. Predominantly cytoplasmic in myocytes.
------	---

图片



12.5% SDS-PAGE analysis of ab132799 stained with Coomassie Blue.

SDS-PAGE - Recombinant Human FATP1 protein
(ab132799)

Please note: All products are "FOR RESEARCH USE ONLY. NOT FOR USE IN DIAGNOSTIC PROCEDURES"

Our Abpromise to you: Quality guaranteed and expert technical support

- Replacement or refund for products not performing as stated on the datasheet
- Valid for 12 months from date of delivery
- Response to your inquiry within 24 hours
- We provide support in Chinese, English, French, German, Japanese and Spanish
- Extensive multi-media technical resources to help you
- We investigate all quality concerns to ensure our products perform to the highest standards

If the product does not perform as described on this datasheet, we will offer a refund or replacement. For full details of the Abpromise, please visit <https://www.abcam.cn/abpromise> or contact our technical team.

Terms and conditions

- Guarantee only valid for products bought direct from Abcam or one of our authorized distributors