

Recombinant Human Extracellular matrix protein 1 ab152353

1 图像

描述	
产品名称	重组人Extracellular matrix蛋白1
表达系统	Wheat germ
Accession	<u>Q16610</u>
蛋白长度	Full length protein
无动物成分	No
性质	Recombinant
种属	Human
序列	MGTTARAALVLTYLAVASAAASEGGFTATGQRQLRPEHFQEVG YAAPPSP LSRSLPMDHPDSSQHGPPEFEGQSQVQPPPSQEATPLQKEKLL PAQLPAEK EVGPPLPQEAVPLQKELPSLQHPNEQKEGMPAPFGDQSHPEP ESWNAAQH CQQDRSQGGWGHRLDGFPPGRPSPDNLNQICLPNRQHVYGP WNLQSSY SHLTRQGETLNFLEIGYSRCCHCRSHTNRLECAKLWEEAMS RFCEAEFS VKTRPHWCCTRQGEARFSCFQEEAPQPHYQLRACPSHQPDIS SGLELPFP PGVPTLDNIKNICHLRFRSVPRNLPATDPLQRELLALIQLE REFQRCCR QGNNHTCTWKAWEDTLDKYCDREYAVKTHHLLCCRHPPSPTR DECFARRA PYPNYDRDILTIDISRATPNLMGHLCGNQRVLTKKKHIPGLI HNMTARCC DLPFPEQACCAEEEEKLTFINDLCGPRRNIWRDPALCCYLSPG DEQVNCFN INYLRNVALVSGDTENAKGQGEQGSGTGGTNISSTSEPKEK
预测分子量	85 kDa including tags
氨基酸	1 to 540
标签	GST tag N-Terminus
技术指标	

Our **Abpromise guarantee** covers the use of **ab152353** in the following tested applications.

The application notes include recommended starting dilutions; optimal dilutions/concentrations should be determined by the end user.

应用	ELISA
	Western blot
	SDS-PAGE
形式	Liquid
补充说明	

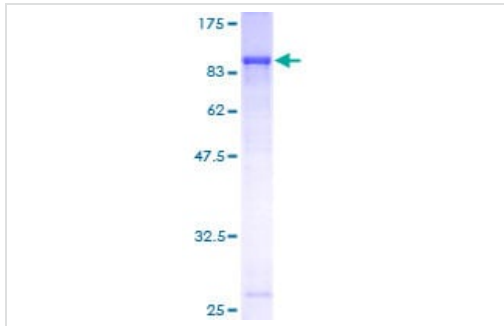
制备和贮存

稳定性和存储	Shipped on dry ice. Upon delivery aliquot and store at -80°C. Avoid freeze / thaw cycles.
	pH: 8.00
	Constituents: 0.31% Glutathione, 0.79% Tris HCl

常规信息

功能	Involved in endochondral bone formation as negative regulator of bone mineralization. Stimulates the proliferation of endothelial cells and promotes angiogenesis. Inhibits MMP9 proteolytic activity.
组织特异性	Expressed in breast cancer tissues. Little or no expression observed in normal breast tissues. Expressed in skin; wide expression is observed throughout the dermis with minimal expression in the epidermis.
疾病相关	Defects in ECM1 are the cause of lipoid proteinosis (LiP) [MIM:247100]; also known as lipoid proteinosis of Urbach and Wiethe or hyalinosis cutis et mucosae. LiP is a rare autosomal recessive disorder characterized by generalized thickening of skin, mucosae and certain viscera. Classical features include beaded eyelid papules and laryngeal infiltration leading to hoarseness. Histologically, there is widespread deposition of hyaline material and disruption/reduplication of basement membrane.
细胞定位	Secreted > extracellular space > extracellular matrix.

图片



12.5% SDS-PAGE analysis of ab152353 stained with Coomassie Blue.

Western blot - Recombinant Human Extracellular matrix protein 1 (ab152353)

Please note: All products are "FOR RESEARCH USE ONLY. NOT FOR USE IN DIAGNOSTIC PROCEDURES"

Our Abpromise to you: Quality guaranteed and expert technical support

- Replacement or refund for products not performing as stated on the datasheet
- Valid for 12 months from date of delivery
- Response to your inquiry within 24 hours
- We provide support in Chinese, English, French, German, Japanese and Spanish
- Extensive multi-media technical resources to help you
- We investigate all quality concerns to ensure our products perform to the highest standards

If the product does not perform as described on this datasheet, we will offer a refund or replacement. For full details of the Abpromise, please visit <https://www.abcam.cn/abpromise> or contact our technical team.

Terms and conditions

- Guarantee only valid for products bought direct from Abcam or one of our authorized distributors