

### Recombinant Human ETHE1 protein ab119454

#### 1 图像

#### 描述

产品名称	重组人ETHE1蛋白
纯度	> 90 % SDS-PAGE.
表达系统	Escherichia coli
Accession	<u><a href="#">O95571</a></u>
蛋白长度	Full length protein
无动物成分	No
性质	Recombinant
种属	Human

序列	<p> <b>MGSSHHHHHH SGLVPRGSH MGSHMLSQRG</b>            GSGAPILLRQ MFEPVSCTFT YLLGDRESRE            AVLIDPVLET APRDAQLIKE LGLRLLYAVN            THCHADHITG SGLLRSL LPG CQSVISRLSG            AQADLHIEDG DSIRFGRFAL ETRASPGHTP            GCVTFVLNDH SMAFTGDALL IRGCGRTDFQ            QGCAKTYHS VHEKIFTLPG DCLIYPAHDY            HGFTVSTVEE ERTLNPRLTL SCEEFVKIMG            NLNLPKPQIQI DFAVPANMRC GVQTPTA         </p>
----	---

预测分子量	29 kDa including tags
氨基酸	13 to 254
标签	His tag N-Terminus

#### 技术指标

Our **Abpromise guarantee** covers the use of **ab119454** in the following tested applications.

The application notes include recommended starting dilutions; optimal dilutions/concentrations should be determined by the end user.

应用	Mass Spectrometry
	SDS-PAGE
质谱法	MALDI-TOF
形式	Liquid

## 制备和贮存

### 稳定性和存储

Shipped at 4°C. Store at +4°C short term (1-2 weeks). Upon delivery aliquot. Store at -20°C or -80°C. Avoid freeze / thaw cycle.

pH: 8.00

Constituents: 0.32% Tris HCl, 10% Glycerol (glycerin, glycerine), 0.58% Sodium chloride

## 常规信息

### 功能

Probably plays an important role in metabolic homeostasis in mitochondria. May function as a nuclear-cytoplasmic shuttling protein that binds transcription factor RELA/NFKB3 in the nucleus and exports it to the cytoplasm. Suppresses p53-induced apoptosis by preventing nuclear localization of RELA.

### 组织特异性

Ubiquitously expressed.

### 疾病相关

Defects in ETHE1 are a cause of ethylmalonic encephalopathy (EE) [MIM:602473]. EE is an autosomal recessive disorder characterized by neurodevelopmental delay and regression, recurrent petechiae, acrocyanosis, diarrhea, leading to death in the first decade of life. It is also associated with persistent lactic acidemia and ethylmalonic and methylsuccinic aciduria.

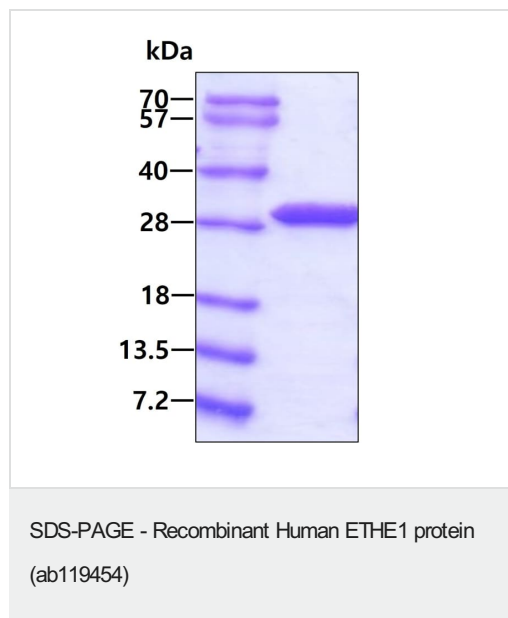
### 序列相似性

Belongs to the metallo-beta-lactamase superfamily. Glyoxalase II family.

### 细胞定位

Cytoplasm. Nucleus. Mitochondrion matrix. According to PubMed:12398897, it is cytoplasmic and nuclear. According to PubMed:14732903, it is found in the mitochondrial matrix.

## 图片



3µg by SDS-PAGE under reducing conditions and visualized by coomassie blue stain.

**Please note:** All products are "FOR RESEARCH USE ONLY. NOT FOR USE IN DIAGNOSTIC PROCEDURES"

## Our Abpromise to you: Quality guaranteed and expert technical support

- Replacement or refund for products not performing as stated on the datasheet

- Valid for 12 months from date of delivery
- Response to your inquiry within 24 hours
- We provide support in Chinese, English, French, German, Japanese and Spanish
- Extensive multi-media technical resources to help you
- We investigate all quality concerns to ensure our products perform to the highest standards

If the product does not perform as described on this datasheet, we will offer a refund or replacement. For full details of the Abpromise, please visit <https://www.abcam.cn/abpromise> or contact our technical team.

### **Terms and conditions**

---

- Guarantee only valid for products bought direct from Abcam or one of our authorized distributors