

### Recombinant human ErbB2 / HER2 protein ab190418

#### 5 图像

#### 描述

<b>产品名称</b>	重组人ErbB2 / HER2蛋白
<b>生物活性</b>	The Specific activity of ab190418 was determined to be 1.4 nmol/min/mg.
<b>纯度</b>	> 75 % Densitometry. Affinity purified.
<b>表达系统</b>	Baculovirus infected Sf9 cells
<b>Accession</b>	<b><u>P04626</u></b>
<b>蛋白长度</b>	Protein fragment
<b>无动物成分</b>	No
<b>性质</b>	Recombinant
<b>种属</b>	Human
<b>序列</b>	<pre> KRRQQ KIRKYTMRRL LQETELVEPL TPSGAMPNQA QMRILKETEL RKVKVLGSGA FGTVYKGIWI PDGENVKIPV AIKVLRENTS PKANKEILDE AYVMAGVGSP YVSRLLGICL TSTVQLVTQL MPYGCLLDHV RENRGRLGSQ DLLNWCMQIA KGMSYLEDVR LVHRDLAARN VLVKSPNHVK ITDFGLARLL DIDETEHAD GGKVPIKWMA LESILRRRFT HQSDVWSYGV TVWELMTFGA KPYDGIPARE IPDLLEKGER LPQPPICTID VYMIMVKCWM IDSECRPRFR ELVSEFSRMA RDPQRFVVIQ NEDLGPASPL DSTFYRSLLE DDDMGDLVDA EEYLVPQQGF FCPDPAPGAG GMVHHRHRSS STRSGGGDLT LGLEPSEEEA PRSPAPSEG AGSDVFDGDL GMGAAKGLQS LPTHDPSPQL RYSEDPTVPL PSETDGYVAP LTCSPQPEYV NQPDVRPQPP SPREGPLPAA RPAGATLERP KTLSPGKNGV VKDVFAFGGA VENPEYLTPQ GGAAPQPHPP PAFSPAFDNL YYWDQDPPER GAPPSTFKGT PTAENPEYLG LDVPV           </pre>
<b>预测分子量</b>	115 kDa including tags
<b>氨基酸</b>	676 to 1255
<b>修饰</b>	unmodified

标签	GST tag N-Terminus
额外的序列信息	Deletion of aa 755-759.

## 技术指标

---

Our **Abpromise guarantee** covers the use of **ab190418** in the following tested applications.

The application notes include recommended starting dilutions; optimal dilutions/concentrations should be determined by the end user.

应用	Functional Studies SDS-PAGE
形式	Liquid

## 制备和贮存

---

稳定性和存储	Shipped on Dry Ice. Upon delivery aliquot. Store at -80°C. Avoid freeze / thaw cycle.  pH: 7.50 Constituents: 0.79% Tris HCl, 0.87% Sodium chloride, 0.31% Glutathione, 0.003% EDTA, 0.004% DTT, 0.002% PMSF, 25% Glycerol (glycerin, glycerine)  This product is an active protein and may elicit a biological response in vivo, handle with caution.
--------	---

## 常规信息

---

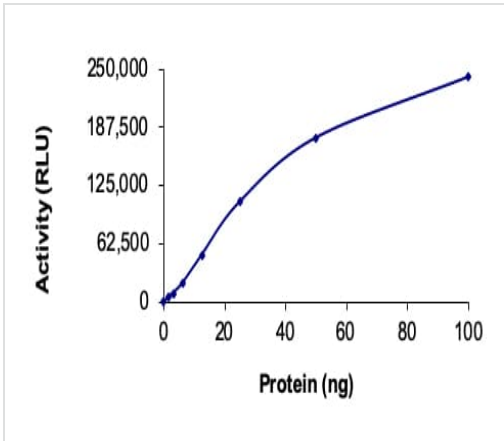
功能	Protein tyrosine kinase that is part of several cell surface receptor complexes, but that apparently needs a coreceptor for ligand binding. Essential component of a neuregulin-receptor complex, although neuregulins do not interact with it alone. GP30 is a potential ligand for this receptor. Regulates outgrowth and stabilization of peripheral microtubules (MTs). Upon ERBB2 activation, the MEMO1-RHOA-DIAPH1 signaling pathway elicits the phosphorylation and thus the inhibition of GSK3B at cell membrane. This prevents the phosphorylation of APC and CLASP2, allowing its association with the cell membrane. In turn, membrane-bound APC allows the localization of MACF1 to the cell membrane, which is required for microtubule capture and stabilization. In the nucleus is involved in transcriptional regulation. Associates with the 5'-TCAAATTC-3' sequence in the PTGS2/COX-2 promoter and activates its transcription. Implicated in transcriptional activation of CDKN1A; the function involves STAT3 and SRC. Involved in the transcription of rRNA genes by RNA Pol I and enhances protein synthesis and cell growth.
组织特异性	Expressed in a variety of tumor tissues including primary breast tumors and tumors from small bowel, esophagus, kidney and mouth.
疾病相关	Hereditary diffuse gastric cancer Glioma Ovarian cancer Lung cancer Gastric cancer  Chromosomal aberrations involving ERBB2 may be a cause gastric cancer. Deletions within 17q12 region producing fusion transcripts with CDK12, leading to CDK12-ERBB2 fusion leading to truncated CDK12 protein not in-frame with ERBB2.
序列相似性	Belongs to the protein kinase superfamily. Tyr protein kinase family. EGF receptor subfamily. Contains 1 protein kinase domain.
翻译后修饰	Autophosphorylated. Autophosphorylation occurs in trans, i.e. one subunit of the dimeric receptor

phosphorylates tyrosine residues on the other subunit (Probable). Ligand-binding increases phosphorylation on tyrosine residues (PubMed:27134172). Signaling via SEMA4C promotes phosphorylation at Tyr-1248 (PubMed:17554007). Dephosphorylated by PTPN12 (PubMed:27134172).

### 细胞定位

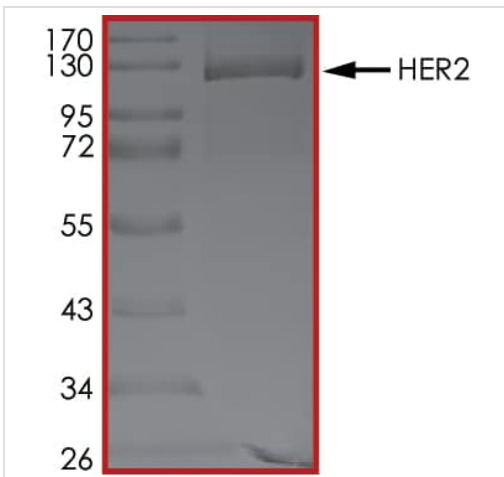
Cytoplasm. Nucleus and Cell membrane. Cytoplasm, perinuclear region. Nucleus. Translocation to the nucleus requires endocytosis, probably endosomal sorting and is mediated by importin beta-1/KPNB1.

### 图片



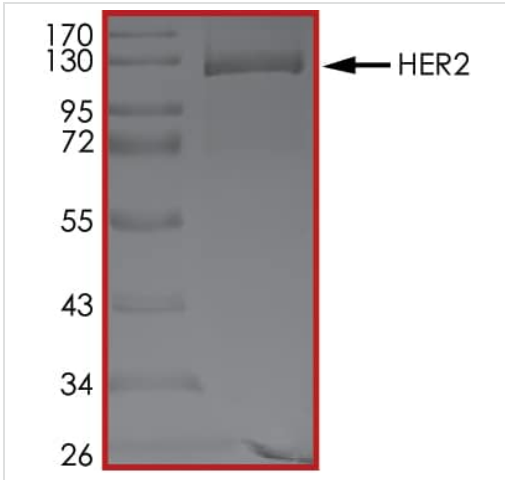
The specific activity of ErbB2 / HER2 (ab190418) was determined to be 9.9 nmol/min/mg as per activity assay protocol

Functional Studies - Recombinant human ErbB2 / HER2 protein (ab190418)



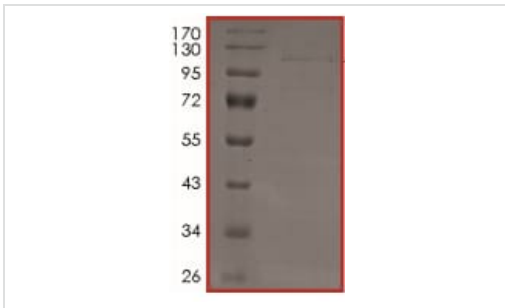
SDS PAGE analysis of ab190418

SDS-PAGE - Recombinant human ErbB2 / HER2 protein (ab190418)



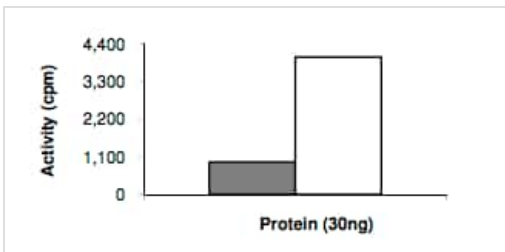
SDS PAGE analysis of ab190418

SDS-PAGE - Recombinant human ErbB2 / HER2 protein (ab190418)



SDS PAGE analysis of ab190418.

SDS-PAGE - Recombinant human ErbB2 / HER2 protein (ab190418)



Kinase assay activity in ab190418 with or without the substrate poly peptide (Glu:Tyr 4:1). Specific activity determined to be 1.4 nmol/ min /mg.

Functional Studies - Recombinant human ErbB2 / HER2 protein (ab190418)

**Please note:** All products are "FOR RESEARCH USE ONLY. NOT FOR USE IN DIAGNOSTIC PROCEDURES"

## **Our Abpromise to you: Quality guaranteed and expert technical support**

---

- Replacement or refund for products not performing as stated on the datasheet
- Valid for 12 months from date of delivery
- Response to your inquiry within 24 hours
  
- We provide support in Chinese, English, French, German, Japanese and Spanish
- Extensive multi-media technical resources to help you
- We investigate all quality concerns to ensure our products perform to the highest standards

If the product does not perform as described on this datasheet, we will offer a refund or replacement. For full details of the Abpromise, please visit <https://www.abcam.cn/abpromise> or contact our technical team.

## **Terms and conditions**

---

- Guarantee only valid for products bought direct from Abcam or one of our authorized distributors