

Recombinant Human EIF3S1/EIF3J protein ab113578

1 图像

描述

产品名称	重组人EIF3S1/EIF3J蛋白
纯度	> 90 % SDS-PAGE. ab113578 is purified using conventional chromatography techniques.
表达系统	Escherichia coli
Accession	<u>O75822</u>
蛋白长度	Protein fragment
无动物成分	No
性质	Recombinant
种属	Human
序列	MGSSHHHHHSSGLVPRGSHMKISEKKKIAEKIKEKERQQK KRQEEIKKR LEEPEEPKVLTPPEQLADKLRLLKQLQESDLELAKETFGVNN AVYGIDAM NPSSRDDFTEFGKLLKDKITQYEKSLYYASFLEVLVRDVCIS LEIDDLKK ITNSLTVLCSEKQKQEKQSKAKKKKGGVPPGGGLKATMKDDL ADYGGYDG GYVQDYEDFM
预测分子量	24 kDa including tags
氨基酸	70 to 258
标签	His tag N-Terminus

技术指标

Our **Abpromise guarantee** covers the use of **ab113578** in the following tested applications.

The application notes include recommended starting dilutions; optimal dilutions/concentrations should be determined by the end user.

应用	SDS-PAGE Mass Spectrometry
质谱法	MALDI-TOF
形式	Liquid
补充说明	This product was previously labelled as EIF3S1

制备和贮存

稳定性和存储

Shipped at 4°C. Store at +4°C short term (1-2 weeks). Upon delivery aliquot. Store at -20°C or -80°C. Avoid freeze / thaw cycle.

pH: 8.00

Constituents: 0.03% DTT, 0.02% Tris HCl, 10% Glycerol (glycerin, glycerine), 1.17% Sodium chloride

常规信息

功能

Component of the eukaryotic translation initiation factor 3 (eIF-3) complex, which is required for several steps in the initiation of protein synthesis. The eIF-3 complex associates with the 40S ribosome and facilitates the recruitment of eIF-1, eIF-1A, eIF-2:GTP:methionyl-tRNA_i and eIF-5 to form the 43S preinitiation complex (43S PIC). The eIF-3 complex stimulates mRNA recruitment to the 43S PIC and scanning of the mRNA for AUG recognition. The eIF-3 complex is also required for disassembly and recycling of posttermination ribosomal complexes and subsequently prevents premature joining of the 40S and 60S ribosomal subunits prior to initiation. This subunit binds directly within the mRNA entry channel of the 40S ribosome to the aminoacyl (A) site. It may regulate the interaction between the 43S PIC and mRNA.

序列相似性

Belongs to the eIF-3 subunit J family.

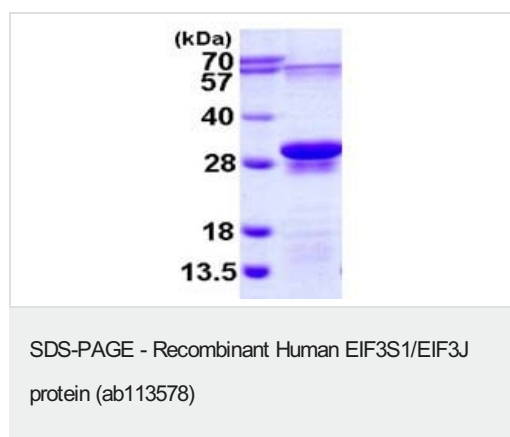
翻译后修饰

Phosphorylated. Phosphorylation is enhanced upon serum stimulation.

细胞定位

Cytoplasm.

图片



15% SDS-PAGE showing ab113578 at approximately 24.0kDa (3µg).

Please note: All products are "FOR RESEARCH USE ONLY. NOT FOR USE IN DIAGNOSTIC PROCEDURES"

Our Abpromise to you: Quality guaranteed and expert technical support

- Replacement or refund for products not performing as stated on the datasheet
- Valid for 12 months from date of delivery

- Response to your inquiry within 24 hours
- We provide support in Chinese, English, French, German, Japanese and Spanish
- Extensive multi-media technical resources to help you
- We investigate all quality concerns to ensure our products perform to the highest standards

If the product does not perform as described on this datasheet, we will offer a refund or replacement. For full details of the Abpromise, please visit <https://www.abcam.cn/abpromise> or contact our technical team.

Terms and conditions

- Guarantee only valid for products bought direct from Abcam or one of our authorized distributors