

Recombinant Human EDG2 /LPA-1 protein ab152354

1 图像

描述	
产品名称	重组人EDG2 /LPA-1蛋白
表达系统	Wheat germ
Accession	<u>Q92633</u>
蛋白长度	Full length protein
无动物成分	No
性质	Recombinant
种属	Human
序列	MAAISTSIPVISQPQFTAMNEPQCFYNESIAFFYNRSGKHLA TEWNTVSK LVMGLGITVCIFIMLANLLVMVAIYVNRFRHFPIYYLMANLA AADFFAGL AYFYLMFNTGPNTRRLTVSTWLLRQGLIDTSLTASVANLLAI AIERHITV FRMQLHTRMSNRRVVVVIVVIWTMAIVMGAIPSVGWNCICDI ENCNMAP LYSDSYLVFWAIFNLVTFVVMVLYAHIFGYVRQRTMRMSRH SSGPRRNR DTMMSLLKTVVIVLGAFIICWTPGLVLLLLDVCCPQCDVLAY EKFFLLLA EFNSAMNPIIYSYRDKEMSATFRQILCCQRSENPTGPTEGSD RSASSLNH TILAGVHSNDHSVV
预测分子量	68 kDa including tags
氨基酸	1 to 364

技术指标	
Our Abpromise guarantee covers the use of ab152354 in the following tested applications.	
The application notes include recommended starting dilutions; optimal dilutions/concentrations should be determined by the end user.	
应用	SDS-PAGE ELISA Western blot
形式	Liquid

补充说明

This product was previously labelled as EDG2.

制备和贮存

稳定性和存储

Shipped on dry ice. Upon delivery aliquot and store at -80°C. Avoid freeze / thaw cycles.

pH: 8.00

Constituents: 0.31% Glutathione, 0.79% Tris HCl

常规信息

功能

Receptor for lysophosphatidic acid (LPA), a mediator of diverse cellular activities. Seems to be coupled to the G(i)/G(o), G(12)/G(13), and G(q) families of heteromeric G proteins. Stimulates phospholipase C (PLC) activity in a manner that is dependent on RALA activation.

组织特异性

Expressed in many adult organs, including brain, heart, colon, small intestine, placenta, prostate, ovary, pancreas, testes, spleen, skeletal muscle, and kidney. Little or no expression in liver, lung, thymus, or peripheral blood leukocytes.

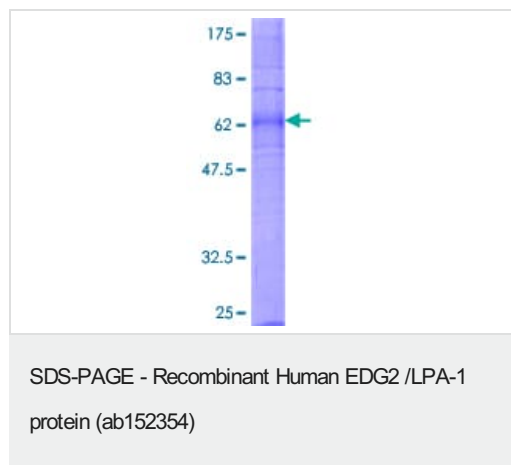
序列相似性

Belongs to the G-protein coupled receptor 1 family.

细胞定位

Cell surface. Cell membrane. Prior to LPA treatment found predominantly at the cell surface but in the presence of LPA co-localizes with RALA in the endocytic vesicles.

图片



12.5% SDS-PAGE analysis of ab152354 stained with Coomassie Blue.

Please note: All products are "FOR RESEARCH USE ONLY. NOT FOR USE IN DIAGNOSTIC PROCEDURES"

Our Abpromise to you: Quality guaranteed and expert technical support

- Replacement or refund for products not performing as stated on the datasheet
- Valid for 12 months from date of delivery
- Response to your inquiry within 24 hours
- We provide support in Chinese, English, French, German, Japanese and Spanish

- Extensive multi-media technical resources to help you
- We investigate all quality concerns to ensure our products perform to the highest standards

If the product does not perform as described on this datasheet, we will offer a refund or replacement. For full details of the Abpromise, please visit <https://www.abcam.cn/abpromise> or contact our technical team.

Terms and conditions

- Guarantee only valid for products bought direct from Abcam or one of our authorized distributors