

Recombinant Human EBP1 protein ab95350

2 图像

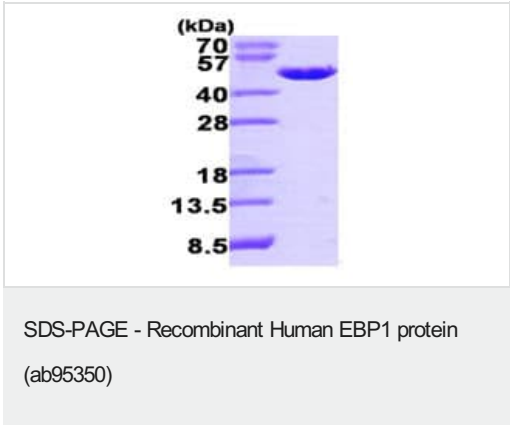
| 描述 | |
|-------|--|
| 产品名称 | 重组人EBP1蛋白 |
| 纯度 | > 95 % SDS-PAGE. ab95350 is purified using conventional chromatography techniques. |
| 表达系统 | Escherichia coli |
| 蛋白长度 | Full length protein |
| 无动物成分 | No |
| 性质 | Recombinant |
| 种属 | Human |
| 序列 | MSGEDEQQEQ TIAEDLVVTK YKMGGDIANR VLRSLVEASS SGVSVLSLCE KGDAMIMEET GKIFKKEKEM KKGIAFPTSI SVNNCVCHFS PLKSDQDYIL KEGDLVKIDL GVHVDGFIAN VAHTFVVDVA QGTQVTGRKA DVIKAAHLCA EAALRLVKPG NQNTQVTEAW NKVAHSFNCT PIEGLMLSHQL KQHVIDGEKT IIQNPTDQQK KDHEKAEFEV HEVYAVDVLV SSGEGKAKDA GQRTTIYKRD PSKQYGLKMK TSRAFFSEVE RRFDAMPFTL RAFEDEKKAR MGVVECAKHE LLQPFNVLYE KEGEFVAQFK FTVLLMPNGP MRITSGPFEP DLYKSEMEVQ DAELKALLQS SASRKTQKKK KKKASKTAEN ATSGETLEEN EAGDLEHHHH HH |

| 技术指标 | |
|--|--------------------------|
| Our Abpromise guarantee covers the use of ab95350 in the following tested applications. | |
| The application notes include recommended starting dilutions; optimal dilutions/concentrations should be determined by the end user. | |
| 应用 | Western blot SDS-PAGE |
| 形式 | Liquid |

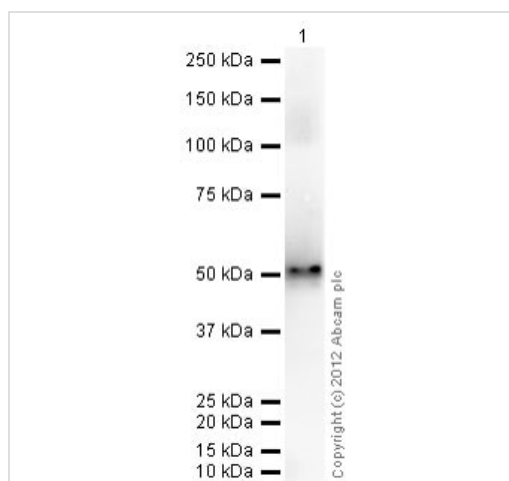
制备和贮存

| | |
|--------|--|
| 稳定性和存储 | <p>Shipped at 4°C. Upon delivery aliquot and store at -20°C or -80°C. Avoid repeated freeze / thaw cycles.</p> <p>pH: 8.00</p> <p>Constituents: 0.316% Tris HCl, 10% Glycerol (glycerin, glycerine)</p> |
| 常规信息 | |
| 功能 | <p>May play a role in a ERBB3-regulated signal transduction pathway. Seems be involved in growth regulation. Acts a corepressor of the androgen receptor (AR) and is regulated by the ERBB3 ligand neuregulin-1/herregulin (HRG). Inhibits transcription of some E2F1-regulated promoters, probably by recruiting histone acetylase (HAT) activity. Binds RNA. Associates with 28S, 18S and 5.8S mature rRNAs, several rRNA precursors and probably U3 small nucleolar RNA. May be involved in regulation of intermediate and late steps of rRNA processing. May be involved in ribosome assembly. Mediates cap-independent translation of specific viral IRESs (internal ribosomal entry site).</p> |
| 组织特异性 | <p>Expressed in several cell lines tested, including primary and transformed cell lines.</p> |
| 序列相似性 | <p>Belongs to the peptidase M24 family.</p> |
| 翻译后修饰 | <p>Phosphorylated on serine and threonine residues. Phosphorylation is enhanced by HRG treatment. Basal phosphorylation is PKC-dependent and HRG-induced phosphorylation is predominantly PKC-independent.</p> |
| 细胞定位 | <p>Cytoplasm. Nucleus > nucleolus. Tranlocates to the nucleus upon treatment with HRG.</p> |

图片



15% SDS-PAGE showing ab95350 at approximately 45 kDa (3 µg).



Western blot - Recombinant Human EBP1 protein
(ab95350)

Please note: All products are "FOR RESEARCH USE ONLY. NOT FOR USE IN DIAGNOSTIC PROCEDURES"

Our Abpromise to you: Quality guaranteed and expert technical support

- Replacement or refund for products not performing as stated on the datasheet
- Valid for 12 months from date of delivery
- Response to your inquiry within 24 hours
- We provide support in Chinese, English, French, German, Japanese and Spanish
- Extensive multi-media technical resources to help you
- We investigate all quality concerns to ensure our products perform to the highest standards

If the product does not perform as described on this datasheet, we will offer a refund or replacement. For full details of the Abpromise, please visit <https://www.abcam.cn/abpromise> or contact our technical team.

Terms and conditions

- Guarantee only valid for products bought direct from Abcam or one of our authorized distributors