

Recombinant Human EB2 protein ab113592

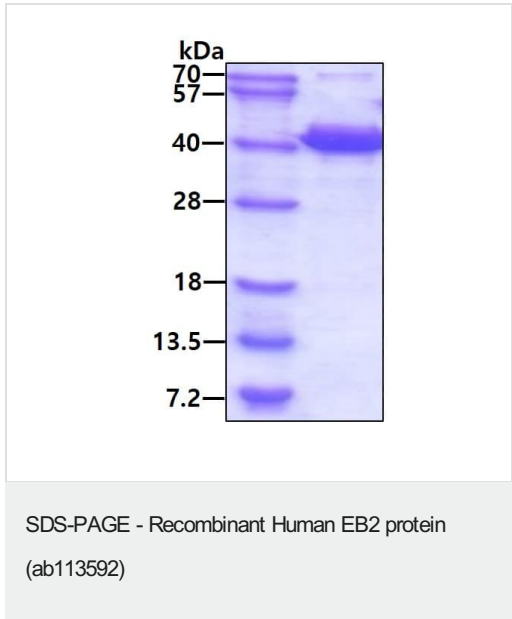
1 图像

描述	
产品名称	重组人EB2蛋白
纯度	> 90 % SDS-PAGE. ab113592 was purified using conventional chromatography.
表达系统	Escherichia coli
Accession	<u>Q15555</u>
蛋白长度	Full length protein
无动物成分	No
性质	Recombinant
种属	Human
序列	MGSSHHHHHSSGLVPRGSHMPGPTQTLSPNGENNNDIIQ DNNGTIIPFR KHTVRGERSYSWGMVNVYSTSITQETMSRHDIIAWVNDIVS LNYTKVEQ LCSGAAYCQFMDMLFPGCISLKKVKFQAKLEHEYIHNFKLLQ ASFKRMNV DKVIPVEKLVKGRFQDNLDFIQWFKKFYDANYDGKEYDPVEA RQGQDAIP PPDPGEQIFNLPKKSHHANSPTAGAAKSSPAAKPGSTPSRPS SAKRASSS GSASKSDKDLETQVIQLNEQVHSLKLALEGVEKERDFYFGKL REIELLCQ EHGQENDDLVRQLMDILYASEEHGHTEEPEAAEQAEHQPP QQEY
预测分子量	39 kDa including tags
氨基酸	1 to 327
标签	His tag N-Terminus

技术指标	
Our <b>Abpromise guarantee</b> covers the use of <b>ab113592</b> in the following tested applications.	
The application notes include recommended starting dilutions; optimal dilutions/concentrations should be determined by the end user.	
应用	Mass Spectrometry

	SDS-PAGE
质谱法	MALDI-TOF
形式	Liquid
<b>制备和贮存</b>	
稳定性和存储	<p>Shipped at 4°C. Store at +4°C short term (1-2 weeks). Upon delivery aliquot. Store at -20°C or -80°C. Avoid freeze / thaw cycle.</p> <p>pH: 8.00</p> <p>Constituents: 0.02% DTT, 0.32% Tris HCl, 20% Glycerol (glycerin, glycerine), 0.58% Sodium chloride</p>
<b>常规信息</b>	
功能	May be involved in microtubule polymerization, and spindle function by stabilizing microtubules and anchoring them at centrosomes. May play a role in cell migration.
组织特异性	Expressed in different tumor cell lines. Up-regulated in activated B- and T-lymphocytes.
序列相似性	<p>Belongs to the MAPRE family.</p> <p>Contains 1 CH (calponin-homology) domain.</p> <p>Contains 1 EB1 C-terminal domain.</p>
结构域	Composed of two functionally independent domains. The N-terminal domain forms an hydrophobic cleft involved in microtubule binding and the C-terminal is involved in the formation of mutually exclusive complexes with APC and DCTN1.
细胞定位	Cytoplasm > cytoskeleton. Associated with the microtubule network. Accumulates at the plus end of microtubules.

图片



3ug by SDS-PAGE under reducing conditions and visualized by coomassie blue stain.

**Please note:** All products are "FOR RESEARCH USE ONLY. NOT FOR USE IN DIAGNOSTIC PROCEDURES"

### **Our Abpromise to you: Quality guaranteed and expert technical support**

---

- Replacement or refund for products not performing as stated on the datasheet
- Valid for 12 months from date of delivery
- Response to your inquiry within 24 hours
  
- We provide support in Chinese, English, French, German, Japanese and Spanish
- Extensive multi-media technical resources to help you
- We investigate all quality concerns to ensure our products perform to the highest standards

If the product does not perform as described on this datasheet, we will offer a refund or replacement. For full details of the Abpromise, please visit <https://www.abcam.cn/abpromise> or contact our technical team.

### **Terms and conditions**

---

- Guarantee only valid for products bought direct from Abcam or one of our authorized distributors