

Product datasheet

Recombinant Human E2F2 protein ab114610

[1 References](#) [1 图像](#)

描述

产品名称	重组人E2F2蛋白
表达系统	Wheat germ
Accession	Q96ID7
蛋白长度	Full length protein
无动物成分	No
性质	Recombinant
种属	Human
序列	MESRSVAQAGVQWPDLGSLQPLPPRFKRFFCLSLQSSWDYRH APPRPANF VFLVETGFCHVSQAGLELLTSSDPPRPPKVL
预测分子量	35 kDa including tags
氨基酸	1 to 83

技术指标

Our **Abpromise guarantee** covers the use of **ab114610** in the following tested applications.

The application notes include recommended starting dilutions; optimal dilutions/concentrations should be determined by the end user.

应用	ELISA SDS-PAGE Western blot
形式	Liquid

制备和贮存

稳定性和存储	Shipped on dry ice. Upon delivery aliquot and store at -80°C. Avoid freeze / thaw cycles. pH: 8.00 Constituents: 0.3% Glutathione, 0.79% Tris HCl
--------	---

常规信息

功能	Transcription activator that binds DNA cooperatively with DP proteins through the E2 recognition
----	--

site, 5'-TTTC[CG]CGC-3' found in the promoter region of a number of genes whose products are involved in cell cycle regulation or in DNA replication. The DRTF1/E2F complex functions in the control of cell-cycle progression from g1 to s phase. E2F-2 binds specifically to RB1 protein, in a cell-cycle dependent manner.

组织特异性

Highest level of expression is found in placenta, low levels are found in lung. Found as well in many immortalized cell lines derived from tumor samples.

序列相似性

Belongs to the E2F/DP family.

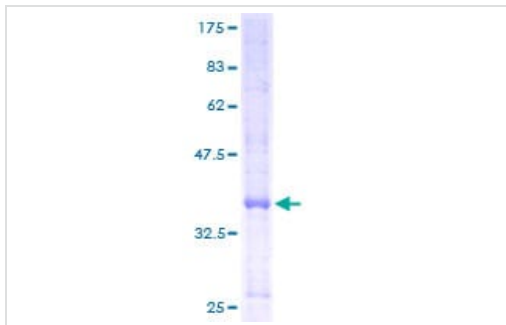
翻译后修饰

Phosphorylated by CDK2 and cyclin A-CDK2 in the S-phase.

细胞定位

Nucleus.

图片



ab114610 analysed on a 12.5% SDS-PAGE gel stained with Coomassie Blue.

SDS-PAGE - Recombinant Human E2F2 protein (ab114610)

Please note: All products are "FOR RESEARCH USE ONLY. NOT FOR USE IN DIAGNOSTIC PROCEDURES"

Our Abpromise to you: Quality guaranteed and expert technical support

- Replacement or refund for products not performing as stated on the datasheet
- Valid for 12 months from date of delivery
- Response to your inquiry within 24 hours

- We provide support in Chinese, English, French, German, Japanese and Spanish
- Extensive multi-media technical resources to help you
- We investigate all quality concerns to ensure our products perform to the highest standards

If the product does not perform as described on this datasheet, we will offer a refund or replacement. For full details of the Abpromise, please visit <https://www.abcam.cn/abpromise> or contact our technical team.

Terms and conditions

- Guarantee only valid for products bought direct from Abcam or one of our authorized distributors