

Recombinant Human DREAM protein ab101211

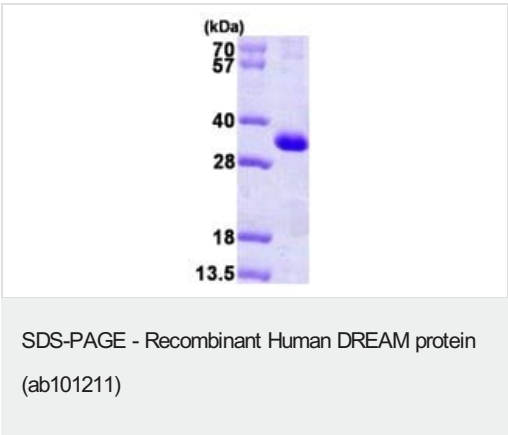
1 图像

描述	
产品名称	重组人DREAM蛋白
纯度	> 90 % SDS-PAGE. ab101211 was purified using conventional chromatography techniques.
表达系统	Escherichia coli
Accession	<u>Q9Y2W7</u>
蛋白长度	Full length protein
无动物成分	No
性质	Recombinant
种属	Human
序列	MGSSHHHHHSSGLVPRGSHMQPAKEVTKASDGSLLGDLG HTPLSKKEGI KWQRPRLSRQALMRCCLVKWILSSTAPQGSDDSELELSTV RHQPEGLD QLQAQTKFTKKELQSLYRGFKNECPTGLVDEDTFKLIYAQFF PQGDATTY AHFLFNAFDADGNGAIHFEDFVVGLSILLRGTVHEKCLKWAFN LYDINKDG YITKEEMLAIMKSIYDMMGRHTYPILREDAPAEHVERFFEKM DRNQDGVV TIEEFLEACQKDENIMSSMQLFENVI
预测分子量	31 kDa including tags
氨基酸	1 to 256
标签	His tag N-Terminus

技术指标	
Our <b>Abpromise guarantee</b> covers the use of <b>ab101211</b> in the following tested applications.	
The application notes include recommended starting dilutions; optimal dilutions/concentrations should be determined by the end user.	
应用	Mass Spectrometry SDS-PAGE
质谱法	MALDI-TOF
形式	Liquid

补充说明	Previously labelled as CSEN.
制备和贮存	
稳定性和存储	<p>Shipped at 4°C. Upon delivery aliquot and store at -20°C or -80°C. Avoid repeated freeze / thaw cycles.</p> <p>pH: 8.00</p> <p>Constituents: 0.0308% DTT, 0.316% Tris HCl, 10% Glycerol (glycerin, glycerine), 0.58% Sodium chloride</p>
常规信息	
功能	<p>Calcium-dependent transcriptional repressor that binds to the DRE element of genes including PDYN and FOS. Affinity for DNA is reduced upon binding to calcium and enhanced by binding to magnesium. Seems to be involved in nociception.</p> <p>Regulatory subunit of Kv4/D (Shal)-type voltage-gated rapidly inactivating A-type potassium channels, such as KCND2/Kv4.2 and KCND3/Kv4.3. Modulates channel expression at the cell membrane, gating characteristics, inactivation kinetics and rate of recovery from inactivation in a calcium-dependent and isoform-specific manner.</p> <p>May play a role in the regulation of PSEN2 proteolytic processing and apoptosis. Together with PSEN2 involved in modulation of beta-amyloid formation.</p>
组织特异性	Highly expressed in brain. Widely expressed at lower levels. Expression levels are elevated in brain cortex regions affected by Alzheimer disease.
序列相似性	<p>Belongs to the recoverin family.</p> <p>Contains 4 EF-hand domains.</p>
翻译后修饰	<p>Palmitoylated. Palmitoylation enhances association with the plasma membrane.</p> <p>Proteolytically cleaved by caspase-3.</p> <p>Phosphorylation at Ser-63 inhibits cleavage by CASP3.</p>
细胞定位	Cytoplasm. Cell membrane. Endoplasmic reticulum. Golgi apparatus. Nucleus. Also membrane-bound, associated with the plasma membrane (PubMed:15485870). In the presence of PSEN2 associated with the endoplasmic reticulum and Golgi. The sumoylated form is present only in the nucleus.

图片



15% SDS-PAGE analysis of 3µg ab101211.

**Please note:** All products are "FOR RESEARCH USE ONLY. NOT FOR USE IN DIAGNOSTIC PROCEDURES"

### **Our Abpromise to you: Quality guaranteed and expert technical support**

---

- Replacement or refund for products not performing as stated on the datasheet
- Valid for 12 months from date of delivery
- Response to your inquiry within 24 hours
- We provide support in Chinese, English, French, German, Japanese and Spanish
- Extensive multi-media technical resources to help you
- We investigate all quality concerns to ensure our products perform to the highest standards

If the product does not perform as described on this datasheet, we will offer a refund or replacement. For full details of the Abpromise, please visit <https://www.abcam.cn/abpromise> or contact our technical team.

### **Terms and conditions**

---

- Guarantee only valid for products bought direct from Abcam or one of our authorized distributors