

Product datasheet

Recombinant Human DNA polymerase alpha/POLA protein ab114839

1 图像

描述

| | |
|-----------|--|
| 产品名称 | 重组人DNA polymerase alpha/POLA蛋白 |
| 表达系统 | Wheat germ |
| Accession | <u>P09884</u> |
| 蛋白长度 | Protein fragment |
| 无动物成分 | No |
| 性质 | Recombinant |
| 种属 | Human |
| 序列 | QFSRTGPLCPACMKATLQPEYSDKSLYTQLCFYRYIFDAECA LEKLTTDH EKDKLKKQFFTPKVLQDYRKLKNTAEQFLSRSGYSEVNLSKL FAGCAVKS |
| 预测分子量 | 37 kDa including tags |
| 氨基酸 | 1363 to 1462 |

技术指标

Our **Abpromise guarantee** covers the use of **ab114839** in the following tested applications.

The application notes include recommended starting dilutions; optimal dilutions/concentrations should be determined by the end user.

| | |
|------|---|
| 应用 | ELISA SDS-PAGE Western blot |
| 形式 | Liquid |
| 补充说明 | This product was previously labelled as DNA polymerase alpha. |

制备和贮存

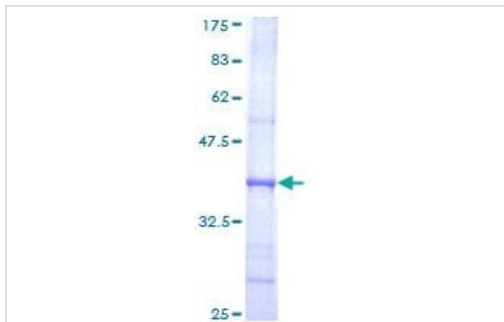
| | |
|--------|---|
| 稳定性和存储 | Shipped on dry ice. Upon delivery aliquot and store at -80°C. Avoid freeze / thaw cycles. pH: 8.00 |
|--------|---|

Constituents: 0.3% Glutathione, 0.79% Tris HCl

常规信息

| | |
|--------------|--|
| 功能 | Plays an essential role in the initiation of DNA replication. During the S phase of the cell cycle, the DNA polymerase alpha complex (composed of a catalytic subunit POLA1/p180, a regulatory subunit POLA2/p70 and two primase subunits PRIM1/p49 and PRIM2/p58) is recruited to DNA at the replicative forks via direct interactions with MCM10 and WDHD1. The primase subunit of the polymerase alpha complex initiates DNA synthesis by oligomerising short RNA primers on both leading and lagging strands. These primers are initially extended by the polymerase alpha catalytic subunit and subsequently transferred to polymerase delta and polymerase epsilon for processive synthesis on the lagging and leading strand, respectively. The reason this transfer occurs is because the polymerase alpha has limited processivity and lacks intrinsic 3' exonuclease activity for proofreading error, and therefore is not well suited for replicating long complexes. |
| 序列相似性 | Belongs to the DNA polymerase type-B family. |
| 翻译后修饰 | A 165 kDa form is probably produced by proteolytic cleavage at Lys-124. |
| 细胞定位 | Nucleus. |

图片



ab114839 analysed by 12.5% SDS-PAGE and stained with Coomassie Blue.

SDS-PAGE - Recombinant Human DNA polymerase alpha/POLA protein (ab114839)

Please note: All products are "FOR RESEARCH USE ONLY. NOT FOR USE IN DIAGNOSTIC PROCEDURES"

Our Abpromise to you: Quality guaranteed and expert technical support

- Replacement or refund for products not performing as stated on the datasheet
- Valid for 12 months from date of delivery
- Response to your inquiry within 24 hours

- We provide support in Chinese, English, French, German, Japanese and Spanish
- Extensive multi-media technical resources to help you
- We investigate all quality concerns to ensure our products perform to the highest standards

If the product does not perform as described on this datasheet, we will offer a refund or replacement. For full details of the Abpromise, please visit <https://www.abcam.cn/abpromise> or contact our technical team.

Terms and conditions

- Guarantee only valid for products bought direct from Abcam or one of our authorized distributors