

Recombinant Human Dishevelled 2 protein ab152348

1 图像

描述	
产品名称	重组人Dishevelled 2蛋白
表达系统	Wheat germ
Accession	<u><b>O14641</b></u>
蛋白长度	Full length protein
无动物成分	No
性质	Recombinant
种属	Human
序列	<div>MAGSSTGGGGVGETKVIYHLDEEETPYLVKIPVPAERITLGD FKSVLQRP AGAKYFFKSMDQDFGVVKEEISDDNARLPCFNGRVVSWLVS DNPQPEMA PPVHEPRAELAPPAPPLPPLPPERTSGIGDSRPPSFHPNVSS SHENLEPE TETESVSLRRERPRRRDSSEHGAGGHRTGGPSRLERHLAGY ESSSTLMT SELESTSLGDSDEEDTMSRFSSSTEQSSASRLKRRRRRKQ RPPRLERT SSFSSVTDSTMSLNIITVTLNMEKYNFLGISIVGQSNERGDG GIYIGSIM KGGAVAADGRIEPGDMLLQVNDMNFENMSNDDAVRVLRDIVH KPGPIVLT VAKCWDPSQAYFTLPRNEPIQPIDPAAWVSHSAALTGTFFPA YPGSSSMS TITSGSSLPDGCEGRGLSVHTDMASVTKAMAAPESGLEVRDR MWLKITIP NAFLGSDVVDWLYHHVEGFPERREARKYASGLLKAGLIRHTV NKITFSEQ CYYVFGDLSGGCESYLVNLSLNDNDGSSGASDQDTLAPLPGA TPWLLPT FSYQYPAPHPYSPQPPPYHELSSYTYGGGSASSQHSEGSRSS GSTRSDGG AGRTGRPEERAPESKSGSGSESEPSSRGGSLRRGGEASGTSD GGPPPSRG STGGAPNLRAHPGLHPYGPPPGMALPYNPMMVMMPPPPPPV PPAVQPPG</div>

预测分子量	105 kDa including tags
氨基酸	1 to 736

## 技术指标

---

Our **Abpromise guarantee** covers the use of **ab152348** in the following tested applications.

The application notes include recommended starting dilutions; optimal dilutions/concentrations should be determined by the end user.

应用	ELISA
	Western blot
	SDS-PAGE

形式	Liquid
----	--------

## 补充说明

## 制备和贮存

---

稳定性和存储	Shipped on dry ice. Upon delivery aliquot and store at -80°C. Avoid freeze / thaw cycles. pH: 8.00 Constituents: 0.31% Glutathione, 0.79% Tris HCl
--------	--

## 常规信息

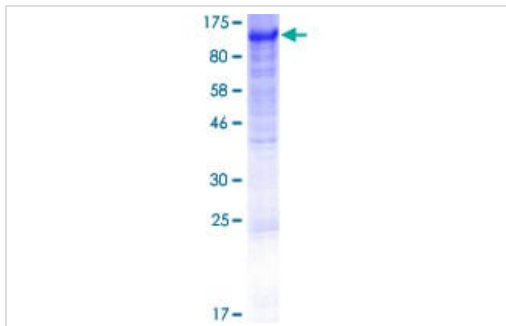
---

功能	Participates in Wnt signaling by binding to the cytoplasmic C-terminus of frizzled family members and transducing the Wnt signal to down-stream effectors. Promotes internalization and degradation of frizzled proteins upon Wnt signaling. Plays a role both in canonical and non-canonical Wnt signaling. Plays a role in the signal transduction pathways mediated by multiple Wnt genes.
序列相似性	Belongs to the DSH family. Contains 1 DEP domain. Contains 1 DIX domain. Contains 1 PDZ (DHR) domain.
结构域	The DIX domain mediates homooligomerization.
细胞定位	Cell membrane. Cytoplasm > cytosol. Cytoplasmic vesicle. Localizes at the cell membrane upon interaction with frizzled family members and promotes their internalization. Localizes to cytoplasmic puncta.

---

## 图片

---



12.5% SDS-PAGE analysis of ab152348 stained with Coomassie Blue.

SDS-PAGE - Recombinant Human Dishevelled 2 protein (ab152348)

**Please note:** All products are "FOR RESEARCH USE ONLY. NOT FOR USE IN DIAGNOSTIC PROCEDURES"

### Our Abpromise to you: Quality guaranteed and expert technical support

---

- Replacement or refund for products not performing as stated on the datasheet
- Valid for 12 months from date of delivery
- Response to your inquiry within 24 hours
- We provide support in Chinese, English, French, German, Japanese and Spanish
- Extensive multi-media technical resources to help you
- We investigate all quality concerns to ensure our products perform to the highest standards

If the product does not perform as described on this datasheet, we will offer a refund or replacement. For full details of the Abpromise, please visit <https://www.abcam.cn/abpromise> or contact our technical team.

### Terms and conditions

---

- Guarantee only valid for products bought direct from Abcam or one of our authorized distributors