

Recombinant Human DCXR protein ab98147

1 图像

描述

产品名称	重组人DCXR蛋白	
纯度	> 95 % SDS-PAGE. ab98147 was purified using conventional chromatography techniques.	
表达系统	Escherichia coli	
Accession	<u>Q7Z4W1</u>	
蛋白长度	Full length protein	
无动物成分	No	
性质	Recombinant	
种属	Human	
序列		<p>MGSSHHHHHSSGLVPRGSHMELFLAGRRVLVTGAGKGIG RGTVQALHAT GARVVAVSRTQADLDSLVRECPGIEPVCVDLGDWEATERALG SVGPVDLL VNNAVALLQPFLEVTKAEFDRSFEVNLRAVIQVSQIVARGL IARGVPGA IVNVSSQCSQRAVTNHSVYCSTKGALDMLTKVMALELGPHKI RVNAVNPT VVMTSMGQATWSDPHKAKTMLNRIPLGKFAEVEHVVNAILFL LSDRSGMT TGSTLPVEGGFWAC</p>
预测分子量	28 kDa including tags	
氨基酸	1 to 244	
标签	His tag N-Terminus	

技术指标

Our **Abpromise guarantee** covers the use of **ab98147** in the following tested applications.

The application notes include recommended starting dilutions; optimal dilutions/concentrations should be determined by the end user.

应用	Mass Spectrometry
	SDS-PAGE
质谱法	MALDI-TOF
形式	Liquid

制备和贮存

稳定性和存储

Shipped at 4°C. Store at +4°C short term (1-2 weeks). Upon delivery aliquot. Store at -20°C or -80°C. Avoid freeze / thaw cycle.

pH: 8.00

Constituents: 0.0154% DTT, 0.316% Tris HCl, 20% Glycerol (glycerin, glycerine), 0.29% Sodium chloride

常规信息

功能

Catalyzes the NADPH-dependent reduction of several pentoses, tetroses, trioses, alpha-dicarbonyl compounds and L-xylulose. Participates in the uronate cycle of glucose metabolism. May play a role in the water absorption and cellular osmoregulation in the proximal renal tubules by producing xylitol, an osmolyte, thereby preventing osmolytic stress from occurring in the renal tubules.

组织特异性

Highly expressed in kidney, liver and epididymis. In the epididymis, it is mainly expressed in the proximal and distal sections of the corpus region. Weakly or not expressed in brain, lung, heart, spleen and testis.

疾病相关

Note=The enzyme defect in pentosuria has been shown to involve L-xylulose reductase. Essential pentosuria is an inborn error of metabolism characterized by the excessive urinary excretion of the pentose L-xylulose.

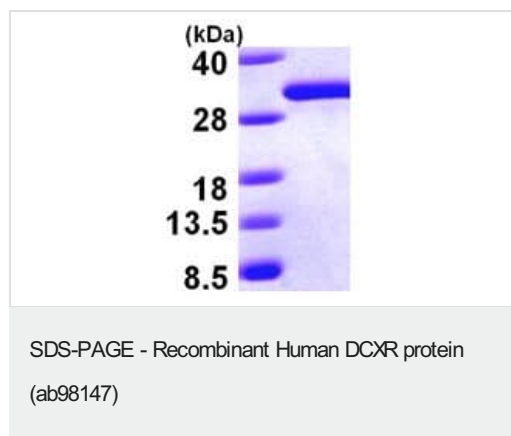
序列相似性

Belongs to the short-chain dehydrogenases/reductases (SDR) family.

细胞定位

Membrane. Probably recruited to membranes via an interaction with phosphatidylinositol.

图片



15% SDS-PAGE analysis of 3µg ab98147

Please note: All products are "FOR RESEARCH USE ONLY. NOT FOR USE IN DIAGNOSTIC PROCEDURES"

Our Abpromise to you: Quality guaranteed and expert technical support

- Replacement or refund for products not performing as stated on the datasheet
- Valid for 12 months from date of delivery
- Response to your inquiry within 24 hours

- We provide support in Chinese, English, French, German, Japanese and Spanish
- Extensive multi-media technical resources to help you
- We investigate all quality concerns to ensure our products perform to the highest standards

If the product does not perform as described on this datasheet, we will offer a refund or replacement. For full details of the Abpromise, please visit <https://www.abcam.cn/abpromise> or contact our technical team.

Terms and conditions

- Guarantee only valid for products bought direct from Abcam or one of our authorized distributors