

### Recombinant Human DARC protein ab114557

#### 1 图像

#### 描述

产品名称	重组人DARC蛋白
表达系统	Wheat germ
Accession	<b><u>Q16570</u></b>
蛋白长度	Full length protein
无动物成分	No
性质	Recombinant
种属	Human
序列	<p>MGNCLHRAELSPSTENSSQLDFEDVWNSSYGVNDSFPDGDYG            ANLEAAAP            CHSCNLLDDSALPFFILTSVLGILASSTVLSMLFRPLFRWQL            CPGWPVLA            QLAVGSALFSIVVPVLAPGLGSTRSSALCSLGYCVWYGSFAFA            QALLLGCH            ASLGHRLGAGQVPGLTLGLTVGIWGVAALLTLPVTLASGASG            GLCTLIYS            TELKALQATHTVACLAIFVLLPLGLFGAKGLKKALGMGPGPW            MNILWAWF            IFWWPHGVVLGLDFLVRKLLLLSTCLAQQALDLLLNLAEL            AILHCVAT            PLLLLALFCHQATRLLPSLPLPEGWFSHLDTLGSKS</p>
预测分子量	63 kDa including tags
氨基酸	1 to 336

#### 技术指标

Our **Abpromise guarantee** covers the use of **ab114557** in the following tested applications.

The application notes include recommended starting dilutions; optimal dilutions/concentrations should be determined by the end user.

应用	ELISA
	Western blot
	SDS-PAGE
形式	Liquid
补充说明	

## 制备和贮存

---

### 稳定性和存储

Shipped on dry ice. Upon delivery aliquot and store at -80°C. Avoid freeze / thaw cycles.

pH: 8.00

Constituents: 0.3% Glutathione, 0.79% Tris HCl

## 常规信息

---

### 功能

Non-specific receptor for many chemokines such as IL-8, GRO, RANTES, MCP-1 and TARC. It is also the receptor for the human malaria parasites Plasmodium vivax and Plasmodium knowlesi.

### 组织特异性

Found in adult kidney, adult spleen, bone marrow and fetal liver. In particular, it is expressed along postcapillary venules throughout the body, except in the adult liver. Erythroid cells and postcapillary venule endothelium are the principle tissues expressing duffy. Fy(-A-B) individuals do not express duffy in the bone marrow, however they do, in postcapillary venule endothelium.

### 序列相似性

Belongs to the G-protein coupled receptor Duffy family.

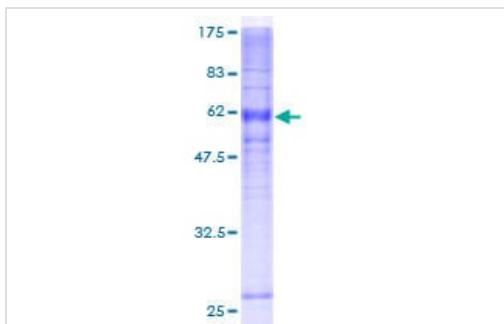
### 细胞定位

Membrane.

---

## 图片

---



12.5% SDS-PAGE Stained with Coomassie Blue

SDS-PAGE - Recombinant Human DARC protein  
(ab114557)

**Please note:** All products are "FOR RESEARCH USE ONLY. NOT FOR USE IN DIAGNOSTIC PROCEDURES"

## Our Abpromise to you: Quality guaranteed and expert technical support

---

- Replacement or refund for products not performing as stated on the datasheet
- Valid for 12 months from date of delivery
- Response to your inquiry within 24 hours
- We provide support in Chinese, English, French, German, Japanese and Spanish
- Extensive multi-media technical resources to help you

- We investigate all quality concerns to ensure our products perform to the highest standards

If the product does not perform as described on this datasheet, we will offer a refund or replacement. For full details of the Abpromise, please visit <https://www.abcam.cn/abpromise> or contact our technical team.

#### **Terms and conditions**

---

- Guarantee only valid for products bought direct from Abcam or one of our authorized distributors