

Recombinant Human Cyclophilin E protein ab78843

1 图像

描述	
产品名称	重组人Cyclophilin E蛋白
生物活性	Specific activity is > 210nmol/min/ug, and is defined as the amount of enzyme that cleaves 1umole of suc-AAPF-pNA per minute at 37°C in Tris-Hcl pH8.0 using chymotrypsin.
纯度	> 95 % SDS-PAGE. ab78843 is purified using conventional chromatography techniques.
表达系统	Escherichia coli
蛋白长度	Full length protein
无动物成分	No
性质	Recombinant
种属	Human
序列	MRGSHHHHHH GMASMTGGQQ MGRDLYDDDD KDRWGSMATT KRVLYVGGLA EEVDDKVLHA AFIPFGDITD IQIPLDYETE KHRGFAFVEF ELAEDAAAAI DNMNESELF RTIRVNLAKP MRIKEGSSRP VWSDDDWLKK FSGKTLEENK EEEGSEPPKA ETQEGEPIAK KARSNPQVYM DIKIGNKPAG RIQMLLRSDV VPMTAENFRC LCTHEKGFGF KGSSFHRIIP QFMCQGGDFT NHNGTGGKSI YGKKFDDENF ILKHTGPGLL SMANSGPNTN GSQFFLTCDK TDWLDGKHVV FGEVTEGLDV LRQIEAQGSK DGKPKQKVII ADCGEYV

技术指标	
Our <b>Abpromise guarantee</b> covers the use of <b>ab78843</b> in the following tested applications.	
The application notes include recommended starting dilutions; optimal dilutions/concentrations should be determined by the end user.	
应用	SDS-PAGE
形式	Liquid

制备和贮存	
稳定性和存储	Shipped at 4°C. Upon delivery aliquot and store at -20°C. Avoid freeze / thaw cycles.

pH: 8.00

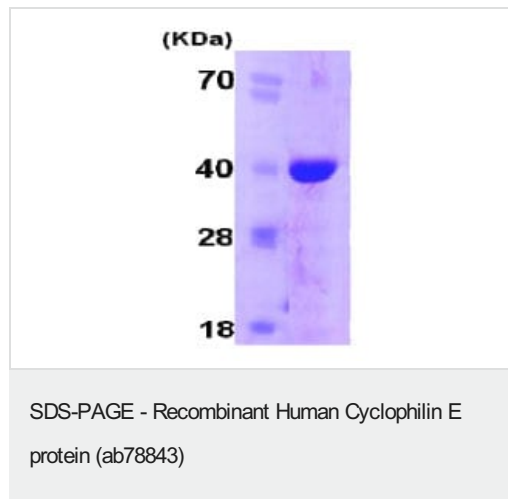
Constituent: 0.242% Tris

This product is an active protein and may elicit a biological response in vivo, handle with caution.

## 常规信息

功能	PPases accelerate the folding of proteins. It catalyzes the cis-trans isomerization of proline imidic peptide bonds in oligopeptides. Combines RNA-binding and PPase activities. May be involved in muscle- and brain-specific processes. May be involved in pre-mRNA splicing.
组织特异性	Found in all the examined tissues including heart, brain, placenta, lung, liver, skeletal muscle, kidney and pancreas.
序列相似性	Belongs to the cyclophilin-type PPase family. PPase E subfamily. Contains 1 PPase cyclophilin-type domain. Contains 1 RRM (RNA recognition motif) domain.
细胞定位	Nucleus.

## 图片



15% SDS-PAGE showing ab78843 at approximately 38kDa (3μg).

**Please note:** All products are "FOR RESEARCH USE ONLY. NOT FOR USE IN DIAGNOSTIC PROCEDURES"

## Our Abpromise to you: Quality guaranteed and expert technical support

- Replacement or refund for products not performing as stated on the datasheet
- Valid for 12 months from date of delivery
- Response to your inquiry within 24 hours
- We provide support in Chinese, English, French, German, Japanese and Spanish
- Extensive multi-media technical resources to help you
- We investigate all quality concerns to ensure our products perform to the highest standards

If the product does not perform as described on this datasheet, we will offer a refund or replacement. For full details of the Abpromise, please visit <https://www.abcam.cn/abpromise> or contact our technical team.

## Terms and conditions

---

- Guarantee only valid for products bought direct from Abcam or one of our authorized distributors