

Recombinant human Cyclophilin A protein (Active) ab86219

7 References 1 图像

描述	
产品名称	重组人Cyclophilin A蛋白(Active)
生物活性	<p>Specific activity is >650 nmoles/min/mg, and is defined as the amount of enzyme that cleaves 1 nmole of suc-AAPF-pNA per minute at 37°C in Tris-Hcl pH8.0 using chymotrypsin.</p> <p>Activity Assay</p> <p>Prepare 180µl assay buffer into a suitable container: Test is 120µl of 200mM Tris-HCl pH8.0, 50µl of 20nM chymotrypsin and 10µl of 100µg/ml Cyclophilin A protein. Blank is 130µl of 200mM Tris-HCl pH8.0 and 50µl of 20nM chymotrypsin. Equilibrate to 37° and monitor the A405nm until value is constant using a spectrophotometer. Load 20µl of 5mM Suc-AAPF-pNA into plate. (460mM Lithium chloride, 3mM 2,2,2-Trifluoroethanol in DW. The suc-AAPF-pNA is first dissolved in DMSO and diluted once in 200 mM Tris-HCl (pH8.0). Finally, manufacture the final 5mM with 460mM Lithium chloride, 3mM 2,2,2-Trifluoroethanol). Add 180µl of assay buffer in 5mM Suc-AAPF-pNA. Record the absorbance A405nm for 40 minutes at 37 °C.</p>
纯度	<p>> 95 % SDS-PAGE.</p> <p>Purified by using conventional chromatography techniques.</p>
内毒素水平	< 1.000 Eu/µg
表达系统	Escherichia coli
Accession	<u>P62937</u>
蛋白长度	Full length protein
无动物成分	No
性质	Recombinant
种属	Human
序列	<p>MGSSHHHHHH SGLVPRGSH MVNPTVFFDI AVDGEPLGRV SFELFADKVP KTAENFRALS TGEKGFYKYG SCFHRIIPGF MCQGGDFTRH NGTGGKSIYG EKFEDEFIL KHTGPGILSM ANAGPNTNGS QFFICTAKTE WLDGKHVVFG KVKEGMNIVE AMERFGSRNG KTSKKITIAD CGQLE</p>
预测分子量	20 kDa including tags

实际分子量	20 kDa including tags
氨基酸	1 to 165
标签	His tag N-Terminus
额外的序列信息	(NP_066953)

技术指标

Our **Abpromise guarantee** covers the use of **ab86219** in the following tested applications.

The application notes include recommended starting dilutions; optimal dilutions/concentrations should be determined by the end user.

应用	Functional Studies
	SDS-PAGE
质谱法	MALDI-TOF
形式	Liquid
补充说明	MW confirme by MALDI-TOF.
	Concentration determined by Bradford assay.
	Endotoxin levels determined by LAL method.

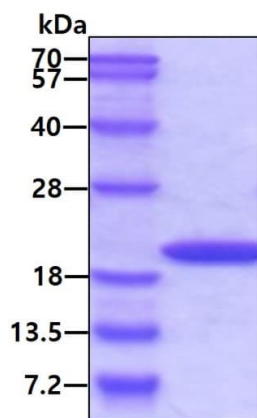
制备和贮存

稳定性和存储	Shipped at 4°C. Store at +4°C short term (1-2 weeks). Upon delivery aliquot. Store at -20°C or -80°C. Avoid freeze / thaw cycle.
	pH: 8.00
	Constituents: 0.116% Sodium chloride, 10% Glycerol, 0.242% Tris, 0.0077% DTT
	This product is an active protein and may elicit a biological response in vivo, handle with caution.

常规信息

功能	PPlases accelerate the folding of proteins. It catalyzes the cis-trans isomerization of proline imidic peptide bonds in oligopeptides.
序列相似性	Belongs to the cyclophilin-type PPlase family. PPlase A subfamily. Contains 1 PPlase cyclophilin-type domain.
细胞定位	Cytoplasm.

图片



SDS-PAGE - Recombinant human Cyclophilin A protein (Active) (ab86219)

3ug by SDS-PAGE under reducing conditions and visualized by coomassie blue stain.

Please note: All products are "FOR RESEARCH USE ONLY. NOT FOR USE IN DIAGNOSTIC PROCEDURES"

Our Abpromise to you: Quality guaranteed and expert technical support

- Replacement or refund for products not performing as stated on the datasheet
- Valid for 12 months from date of delivery
- Response to your inquiry within 24 hours
- We provide support in Chinese, English, French, German, Japanese and Spanish
- Extensive multi-media technical resources to help you
- We investigate all quality concerns to ensure our products perform to the highest standards

If the product does not perform as described on this datasheet, we will offer a refund or replacement. For full details of the Abpromise, please visit <https://www.abcam.cn/abpromise> or contact our technical team.

Terms and conditions

- Guarantee only valid for products bought direct from Abcam or one of our authorized distributors