

Recombinant Human CutA protein ab95345

1 图像

描述	
产品名称	重组人CutA蛋白
纯度	> 95 % SDS-PAGE. ab95345 is purified using conventional chromatography techniques.
表达系统	Escherichia coli
蛋白长度	Full length protein
无动物成分	No
性质	Recombinant
种属	Human
序列	MRLLLLPRVL LTMASGSPPT QSPASDSGS GYVPGSVSAA FVTCPNEKVA KEIARAVVEK RLAACVNLIP QITSIYEWKG KIEEDSEVLM MIKTQSSLVP ALTDFVRSVH PYEVAEVIAL PVEQGNFPYL QWVRQVTESV SDSITVLPLE HHHHHH

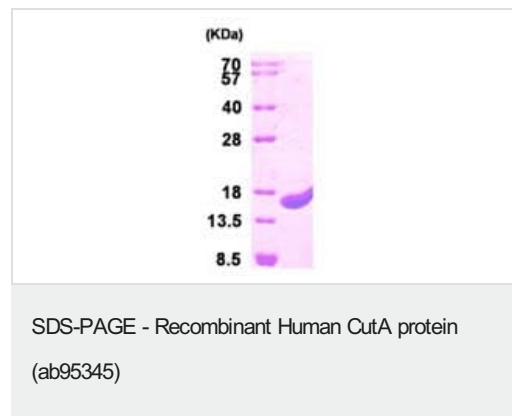
技术指标	
Our Abpromise guarantee covers the use of ab95345 in the following tested applications.	
The application notes include recommended starting dilutions; optimal dilutions/concentrations should be determined by the end user.	
应用	SDS-PAGE
形式	Liquid

制备和贮存	
稳定性和存储	Shipped at 4°C. Upon delivery aliquot and store at -20°C or -80°C. Avoid repeated freeze / thaw cycles. pH: 8.00 Constituents: 0.0154% DTT, 0.316% Tris HCl, 10% Glycerol (glycerin, glycerine)

常规信息	
功能	May form part of a complex of membrane proteins attached to acetylcholinesterase (AChE).

组织特异性	Ubiquitous. Widely expressed in brain.
序列相似性	Belongs to the CutA family.
翻译后修饰	O-glycosylated.

图片



15% SDS-PAGE analysis of 3µg ab95345.

Please note: All products are "FOR RESEARCH USE ONLY. NOT FOR USE IN DIAGNOSTIC PROCEDURES"

Our Abpromise to you: Quality guaranteed and expert technical support

- Replacement or refund for products not performing as stated on the datasheet
- Valid for 12 months from date of delivery
- Response to your inquiry within 24 hours
- We provide support in Chinese, English, French, German, Japanese and Spanish
- Extensive multi-media technical resources to help you
- We investigate all quality concerns to ensure our products perform to the highest standards

If the product does not perform as described on this datasheet, we will offer a refund or replacement. For full details of the Abpromise, please visit <https://www.abcam.cn/abpromise> or contact our technical team.

Terms and conditions

- Guarantee only valid for products bought direct from Abcam or one of our authorized distributors