

# Recombinant Human CTNNA1 protein (Tagged) ab51443

[1 References](#) [2 图像](#)

### 描述

---

产品名称	重组人CTNNA1蛋白(Tagged)
纯度	= 95 % Densitometry. Affinity purified.
表达系统	Baculovirus infected Sf9 cells
Accession	<b><u>P35221</u></b>
蛋白长度	Full length protein
无动物成分	No
性质	Recombinant
种属	Human
预测分子量	123 kDa including tags
标签	GST tag N-Terminus
额外的序列信息	NM 001903

### 技术指标

---

Our **Abpromise guarantee** covers the use of **ab51443** in the following tested applications.

The application notes include recommended starting dilutions; optimal dilutions/concentrations should be determined by the end user.

应用	SDS-PAGE Western blot
形式	Liquid
补充说明	This product was previously labelled as alpha 1 Catenin

### 制备和贮存

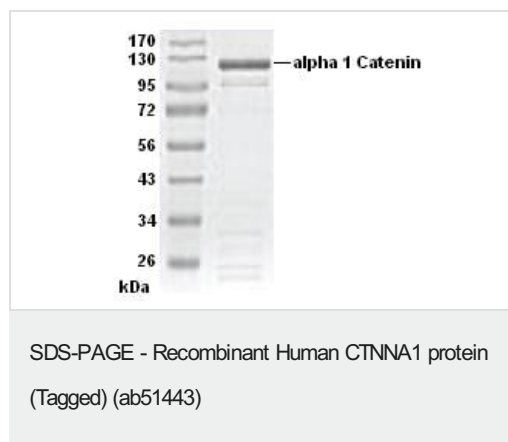
---

稳定性和存储	Shipped on dry ice. Upon delivery aliquot and store at -80°C. Avoid freeze / thaw cycles. pH: 7.50 Constituents: 0.00174% PMSF, 0.00385% DTT, 0.79% Tris HCl, 25% Glycerol (glycerin, glycerine), 0.87% Sodium chloride
--------	---

## 常规信息

<b>功能</b>	Associates with the cytoplasmic domain of a variety of cadherins. The association of catenins to cadherins produces a complex which is linked to the actin filament network, and which seems to be of primary importance for cadherins cell-adhesion properties. Can associate with both E- and N-cadherins. Originally believed to be a stable component of E-cadherin/catenin adhesion complexes and to mediate the linkage of cadherins to the actin cytoskeleton at adherens junctions. In contrast, cortical actin was found to be much more dynamic than E-cadherin/catenin complexes and CTNNA1 was shown not to bind to F-actin when assembled in the complex suggesting a different linkage between actin and adherens junctions components. The homodimeric form may regulate actin filament assembly and inhibit actin branching by competing with the Arp2/3 complex for binding to actin filaments. May play a crucial role in cell differentiation.
<b>组织特异性</b>	Expressed ubiquitously in normal tissues.
<b>序列相似性</b>	Belongs to the vinculin/alpha-catenin family.
<b>翻译后修饰</b>	Sumoylated.
<b>细胞定位</b>	Cell membrane and Cytoplasm > cytoskeleton. Cell junction > adherens junction. Cell membrane. Cell junction. Found at cell-cell boundaries and probably at cell-matrix boundaries.

## 图片



SDS-PAGE analysis of recombinant human CTNNA1 protein (Tagged) (ab51443) .

MW ~123 kDa



Western blot - Recombinant Human CTNNA1 protein  
(Tagged) (ab51443)

**Please note:** All products are "FOR RESEARCH USE ONLY. NOT FOR USE IN DIAGNOSTIC PROCEDURES"

### Our Abpromise to you: Quality guaranteed and expert technical support

---

- Replacement or refund for products not performing as stated on the datasheet
- Valid for 12 months from date of delivery
- Response to your inquiry within 24 hours
- We provide support in Chinese, English, French, German, Japanese and Spanish
- Extensive multi-media technical resources to help you
- We investigate all quality concerns to ensure our products perform to the highest standards

If the product does not perform as described on this datasheet, we will offer a refund or replacement. For full details of the Abpromise, please visit <https://www.abcam.cn/abpromise> or contact our technical team.

### Terms and conditions

---

- Guarantee only valid for products bought direct from Abcam or one of our authorized distributors