

Recombinant Human CTHRC1 protein ab203710

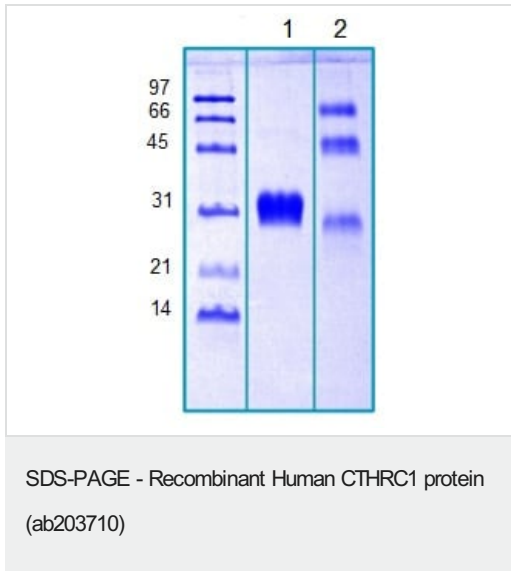
1 图像

描述	
产品名称	重组人CTHRC1蛋白
纯度	> 95 % SDS-PAGE. Assessed by densitometry. Purified using Ni-NTA chromatography.
内毒素水平	< 1.000 Eu/μg
表达系统	HEK 293 cells
Accession	<b><u>Q96CG8</u></b>
蛋白长度	Full length protein
无动物成分	No
性质	Recombinant
种属	Human
序列	SEIPKGKQKAQLRQREVVDLYNGMCLQGPGVPGRDGSPGAN GIPGTPGI PGRDGFKEGEGECLRESFEESWTPNYKQCSWSSLNYGIDLK IAECTFTK MRSNSALRVLFSGSLRLKCRNACCQRWYFTFNGAECSGPLPI EAIYLDQ GSPMNSTINIHRTSSVEGLCEGIGAGLVDVAIWVGTCSDYP KGDASTGW NSVSRIIEELPKHHHHHH
预测分子量	24 kDa including tags
氨基酸	31 to 243
标签	His tag C-Terminus
额外的序列信息	Mature protein without Signal peptide.

技术指标	
Our <b>Abpromise guarantee</b> covers the use of <b>ab203710</b> in the following tested applications.	
The application notes include recommended starting dilutions; optimal dilutions/concentrations should be determined by the end user.	
应用	Mass Spectrometry SDS-PAGE Western blot Functional Studies

质谱法	LC-MS/MS
形式	Lyophilized
<b>制备和贮存</b>	
稳定性和存储	<p>Shipped at 4°C. Store at -80°C.</p> <p>pH: 7.50</p> <p>Constituent: 100% PBS</p>
复溶	Add 200 µl of deionized water to prepare a working stock solution of approximately 0.5 mg/ml and let the lyophilized pellet dissolve completely. Filter sterilize your culture media/working solutions containing this non-sterile product before using in cell culture.
<b>常规信息</b>	
功能	May act as a negative regulator of collagen matrix deposition.
组织特异性	Isoform 1 is expressed in calcified atherosclerotic plaque and chondrocyte-like cells.
序列相似性	Contains 1 collagen-like domain.
翻译后修饰	N-glycosylated.
细胞定位	Secreted > extracellular space > extracellular matrix.

图片



14 % SDS-PAGE analysis of ab203710

1. Reduced and boiled sample, 2.5 µg/lane.

2. Non-reduced and non-boiled sample, 2.5 µg/lane.

**Please note:** All products are "FOR RESEARCH USE ONLY. NOT FOR USE IN DIAGNOSTIC PROCEDURES"

Our Abpromise to you: Quality guaranteed and expert technical support

- Replacement or refund for products not performing as stated on the datasheet
- Valid for 12 months from date of delivery

- Response to your inquiry within 24 hours
- We provide support in Chinese, English, French, German, Japanese and Spanish
- Extensive multi-media technical resources to help you
- We investigate all quality concerns to ensure our products perform to the highest standards

If the product does not perform as described on this datasheet, we will offer a refund or replacement. For full details of the Abpromise, please visit <https://www.abcam.cn/abpromise> or contact our technical team.

#### **Terms and conditions**

---

- Guarantee only valid for products bought direct from Abcam or one of our authorized distributors