

Recombinant Human CSRP1 protein ab114649

1 图像

描述

产品名称	重组人CSRP1蛋白
表达系统	Wheat germ
Accession	<u>P21291</u>
蛋白长度	Full length protein
无动物成分	No
性质	Recombinant
种属	Human
序列	MPNWGGGKKCGVCQKTVYFAEEVQCEGNSFHKSCFLCMVCKK NLDSTTVA VHGEEIYCKSCYGKKYGPKGYGQGAGTLSTDKGESLGIKH EEAPGHRP TTNPNAKFAQKIGGSERCPRCSQAVYAAEKVIGAGKSWHKA CFRCAKCG KGLESTTLADKDGEIYCKGICYAKNFGPKGFGFGGAGALVHS E
预测分子量	47 kDa including tags
氨基酸	1 to 193

技术指标

Our **Abpromise guarantee** covers the use of **ab114649** in the following tested applications.

The application notes include recommended starting dilutions; optimal dilutions/concentrations should be determined by the end user.

应用	ELISA SDS-PAGE Western blot
形式	Liquid

制备和贮存

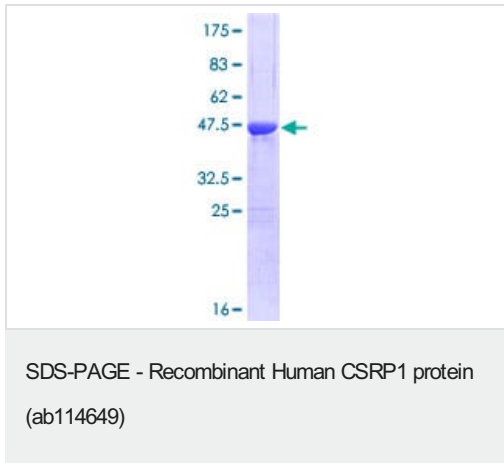
稳定性和存储	Shipped on dry ice. Upon delivery aliquot and store at -80°C. Avoid freeze / thaw cycles. pH: 8.00
--------	---

Constituents: 0.3% Glutathione, 0.79% Tris HCl

常规信息

功能	Could play a role in neuronal development.
序列相似性	Contains 2 LIM zinc-binding domains.
细胞定位	Nucleus.

图片



ab114649 analysed on a 12.5% SDS-PAGE gel stained with Coomassie Blue.

Please note: All products are "FOR RESEARCH USE ONLY. NOT FOR USE IN DIAGNOSTIC PROCEDURES"

Our Abpromise to you: Quality guaranteed and expert technical support

- Replacement or refund for products not performing as stated on the datasheet
- Valid for 12 months from date of delivery
- Response to your inquiry within 24 hours
- We provide support in Chinese, English, French, German, Japanese and Spanish
- Extensive multi-media technical resources to help you
- We investigate all quality concerns to ensure our products perform to the highest standards

If the product does not perform as described on this datasheet, we will offer a refund or replacement. For full details of the Abpromise, please visit <https://www.abcam.cn/abpromise> or contact our technical team.

Terms and conditions

- Guarantee only valid for products bought direct from Abcam or one of our authorized distributors