

Recombinant Human CRYGD protein ab111649

1 图像

描述

产品名称	重组人CRYGD蛋白
纯度	> 95 % SDS-PAGE. ab111649 is purified using conventional chromatography.
表达系统	Escherichia coli
Accession	<u>P07320</u>
蛋白长度	Full length protein
无动物成分	No
性质	Recombinant
种属	Human
序列	MGSSHHHHHSSGLVPRGSHMGKITLYEDRGFQGRHYECS SDHPNLQPYL SRCNSARVDSGCWMLYEQPNYSGLQYFLRRGDYADHQWMGL SDSVRSCR LIPHSGSHRIRLYEREDYRGQMIEFTEDCSCLQDRFRFNEIH SLNVLEGS WVLYELSNYRGRQYLLMPGDYRRYQDWGATNARVGLRVID FS
预测分子量	23 kDa including tags
氨基酸	1 to 174
标签	His tag N-Terminus

技术指标

Our **Abpromise guarantee** covers the use of **ab111649** in the following tested applications.

The application notes include recommended starting dilutions; optimal dilutions/concentrations should be determined by the end user.

应用	SDS-PAGE Mass Spectrometry
质谱法	MALDI-TOF
形式	Liquid

制备和贮存

稳定性和存储

Shipped at 4°C. Store at +4°C short term (1-2 weeks). Upon delivery aliquot. Store at -20°C or -80°C. Avoid freeze / thaw cycle.

pH: 8.00

Constituents: 88% Tris buffer, 0.08% DTT, 10% Glycerol (glycerin, glycerine), 1.17% Sodium chloride

常规信息

功能 Crystallins are the dominant structural components of the vertebrate eye lens.

疾病相关 Defects in CRYGD are a cause of cataract autosomal dominant (ADC) [MIM:604219]. Cataract is an opacification of the crystalline lens of the eye that frequently results in visual impairment or blindness. Opacities vary in morphology, are often confined to a portion of the lens, and may be static or progressive. In general, the more posteriorly located and dense an opacity, the greater the impact on visual function. Cataract is the most common treatable cause of visual disability in childhood.

Defects in CRYGD are the cause of cataract congenital non-nuclear polymorphic autosomal dominant (CCP) [MIM:601286]; also known as polymorphic congenital cataract. A congenital cataract characterized by a non-progressive phenotype and partial opacity that has a variable location between the fetal nucleus of the lens and the equator. The fetal nucleus is normal. The opacities are irregular and look similar to a bunch of grapes and may be present simultaneously in different lens layers.

Defects in CRYGD are the cause of cataract congenital cerulean type 3 (CCA3) [MIM:608983]; also known as congenital cataract blue dot type 3. A cerulean form of autosomal dominant congenital cataract. Cerulean cataract is characterized by peripheral bluish and white opacifications organized in concentric layers with occasional central lesions arranged radially. The opacities are observed in the superficial layers of the fetal nucleus as well as the adult nucleus of the lens. Involvement is usually bilateral. Visual acuity is only mildly reduced in childhood. In adulthood, the opacifications may progress, making lens extraction necessary.

Histologically the lesions are described as fusiform cavities between lens fibers which contain a deeply staining granular material. Although the lesions may take on various colors, a dull blue is the most common appearance and is responsible for the designation cerulean cataract.

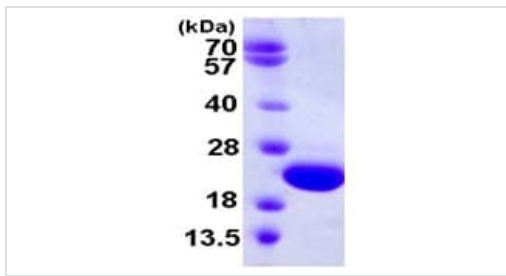
Defects in CRYGD are the cause of cataract crystalline aculeiform (CACA) [MIM:115700]. A congenital crystalline cataract characterized by fiberglass-like or needle-like crystals projecting in different directions, through or close to the axial region of the lens. The opacity causes a variable degree of vision loss.

序列相似性 Belongs to the beta/gamma-crystallin family.

Contains 4 beta/gamma crystallin 'Greek key' domains.

结构域 Has a two-domain beta-structure, folded into four very similar Greek key motifs.

图片



15% SDS-PAGE analysis of ab111649 (3 µg)

SDS-PAGE - Recombinant Human CRYGD protein
(ab111649)

Please note: All products are "FOR RESEARCH USE ONLY. NOT FOR USE IN DIAGNOSTIC PROCEDURES"

Our Abpromise to you: Quality guaranteed and expert technical support

- Replacement or refund for products not performing as stated on the datasheet
- Valid for 12 months from date of delivery
- Response to your inquiry within 24 hours
- We provide support in Chinese, English, French, German, Japanese and Spanish
- Extensive multi-media technical resources to help you
- We investigate all quality concerns to ensure our products perform to the highest standards

If the product does not perform as described on this datasheet, we will offer a refund or replacement. For full details of the Abpromise, please visit <https://www.abcam.cn/abpromise> or contact our technical team.

Terms and conditions

- Guarantee only valid for products bought direct from Abcam or one of our authorized distributors