

# Recombinant human Cripto1/CRIPTO protein (Fc Chimera) ab84062

3 图像

描述	
产品名称	重组人Cripto1/CRIPTO蛋白(Fc Chimera)
纯度	> 95 % SDS-PAGE.
表达系统	HEK 293 cells
Accession	<u>P13385</u>
蛋白长度	Protein fragment
无动物成分	No
性质	Recombinant
种属	Human
序列	<div>Theoretical sequence: LGHQEFARPSRGYLAFRDDSIWPQEEPAIRPRSSQRVPP MGIQHSKEL NRTCCLNGGTCMLGSFCACPPSFYGRNCEHDVRKENC VPHDTWLPK KCSLCKCWHGQLRCFPQAFLPGCDGLVMDEHLVASRTPE LPPSGSSNT KVDKKVEPKSCDKTHTCPPCPAPELLGGPSVFLFPPKPK DTLMISRTPEVTCVVVDVSHEDPEVKFNWYVDGVEVHNAKTKPREEQY NSTYRVVSVLTVLHQDWLNGKEYKCKVSNKALPAPIEKTISKAKGQPR EPQVYTLPPSRDELTKNQVSLTCLVKGFYPSDIAVEWESNGQPENNYK TTPPVLDSDGSFFLYSKLTVDKSRWQQGNVFSCSVMHEALHNHYTQKS LSLSPGK</div>
氨基酸	31 to 169
额外的序列信息	Encodes the signal peptide and extracellular domain of human Cripto-1 (aa 1-169) was fused to the Fc region of human IgG1 (aa 90-330). The chimeric protein was expressed in modified human 293 cells.

## 这个图标

---

Our **Abpromise guarantee** covers the use of **ab84062** in the following tested applications.

The application notes include recommended starting dilutions; optimal dilutions/concentrations should be determined by the end user.

应用	SDS-PAGE
形式	Lyophilized
补充说明	200 ng/ml of this Chimera induces ERK1 and ERK2 phosphorylation in human umbilical vein endothelial (HUVEC) cells. This product was previously labelled as Cripto1  This product was previously labelled as Cripto1

## 制备和贮存

---

稳定性和存储	Shipped at 4°C. After reconstitution store at -20°C. Avoid freeze / thaw cycles. Constituents: 1% Human serum albumin, 10% Trehalose This product is an active protein and may elicit a biological response in vivo, handle with caution.
复溶	It is recommended that 0.5 ml of sterile phosphate-buffered saline be added to the vial. Following reconstitution short-term storage at 4°C is recommended, with longer-term storage in aliquots at -18 to -20°C. Repeated freeze thawing is not recommended.

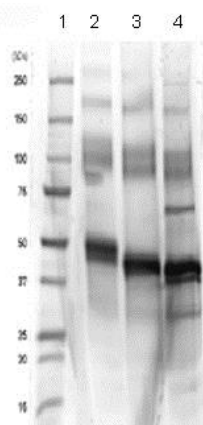
## 常规信息

---

功能	Could play a role in the determination of the epiblastic cells that subsequently give rise to the mesoderm.
组织特异性	Preferentially expressed in gastric and colorectal carcinomas than in their normal counterparts.
序列相似性	Contains 1 EGF-like domain.
细胞定位	Cell membrane.

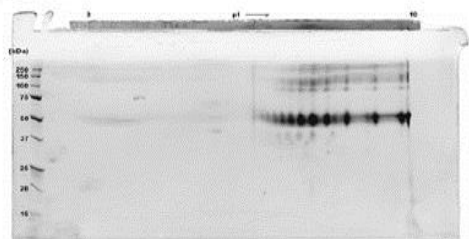
## 图片

---



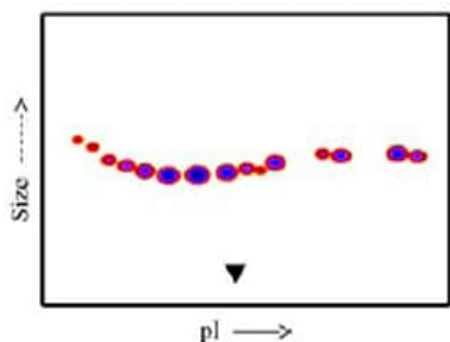
SDS-PAGE - Recombinant human Cripto1/CRIPTO protein (Fc Chimera) (ab84062)

Lane 1 – MW markers; Lane 2 – ab84062; Lane 3 – ab84062 treated with PNGase F to remove potential N linked glycans; Lane 4 – ab84062 treated with a glycosidase cocktail to remove potential N- and O-linked glycans. Approximately 5 µg of protein was loaded per lane; Gel was stained using Coomassie. Drop in MW after treatment with PNGase F indicates the presence of N-linked glycans. A further drop in MW after treatment with the glycosidase cocktail indicates the presence of O-linked glycans. Additional bands in lane 3 and lane 4 are glycosidase enzymes.



SDS-PAGE - Recombinant human Cripto1/CRIPTO protein (Fc Chimera) (ab84062)

A sample of ab84062 without carrier protein was reduced and alkylated and focused on a 3-10 IPG strip then run on a 4 20% Tris-HCl 2D gel. Approximately 40 µg of protein was loaded; Gel was stained using Deep Purple™. The spot train indicates the presence of multiple glycoforms. Spots within the spot train were cut from the gel and identified as Cripto1/CRIPTO (Fc Chimera) by protein mass fingerprinting.



Functional Studies - Recombinant human Cripto1/CRIPTO protein (Fc Chimera) (ab84062)

Post-translational modifications result in protein heterogeneity. The densitometry scan demonstrates the purified human cell expressed protein exists in multiple glycoforms, which differ according to their level of post-translational modification. The triangle indicates theoretical pI and MW of the protein.

**Please note:** All products are "FOR RESEARCH USE ONLY. NOT FOR USE IN DIAGNOSTIC PROCEDURES"

### Our Promise to you: Quality guaranteed and expert technical support

- Replacement or refund for products not performing as stated on the datasheet
- Valid for 12 months from date of delivery

- Response to your inquiry within 24 hours
- We provide support in Chinese, English, French, German, Japanese and Spanish
- Extensive multi-media technical resources to help you
- We investigate all quality concerns to ensure our products perform to the highest standards

If the product does not perform as described on this datasheet, we will offer a refund or replacement. For full details of the Abpromise, please visit <https://www.abcam.cn/abpromise> or contact our technical team.

#### **Terms and conditions**

---

- Guarantee only valid for products bought direct from Abcam or one of our authorized distributors