

Recombinant Human COTL1 protein ab116193

1 图像

描述

| | |
|-----------|--|
| 产品名称 | 重组人COTL1蛋白 |
| 纯度 | > 90 % SDS-PAGE. ab116193 was purified using conventional chromatography techniques. |
| 表达系统 | Escherichia coli |
| Accession | <u>Q14019</u> |
| 蛋白长度 | Full length protein |
| 无动物成分 | No |
| 性质 | Recombinant |
| 种属 | Human |
| 序列 | MGSSHHHHH SSGLVPRGSH MATKIDKEAC RAAYNLVRDD GSAVIWVTFK YDGSTIVPGE QGAEQHFIQ QCTDDVRLFA FVRFTTG DAMSKRSKFALIT WIGENVSLQ RAKTGTDKTL VKEVVQNFAK EFVISDRKEL EEDFIKSELK KAGGANYDAQ TE |
| 预测分子量 | 18 kDa including tags |
| 氨基酸 | 1 to 142 |
| 标签 | His tag N-Terminus |

技术指标

Our **Abpromise guarantee** covers the use of **ab116193** in the following tested applications.

The application notes include recommended starting dilutions; optimal dilutions/concentrations should be determined by the end user.

| | |
|-----|-------------------------------|
| 应用 | SDS-PAGE Mass Spectrometry |
| 质谱法 | MALDI-TOF |
| 形式 | Liquid |

制备和贮存

| | |
|--------|--|
| 稳定性和存储 | Shipped at 4°C. Store at +4°C short term (1-2 weeks). Upon delivery aliquot. Store at -20°C or -80°C. Avoid freeze / thaw cycle. |
|--------|--|

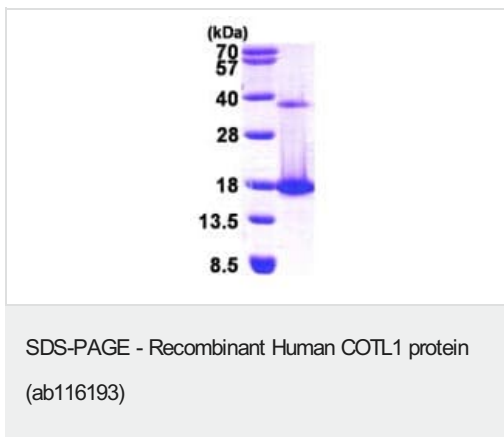
pH: 8.00

Constituents: 0.02% DTT, 0.32% Tris HCl, 10% Glycerol (glycerin, glycerine), 0.58% Sodium chloride

常规信息

| | |
|--------------|---|
| 功能 | Binds to F-actin in a calcium-independent manner. Has no direct effect on actin depolymerization. |
| 组织特异性 | Widely expressed with highest levels in placenta, lung, kidney and peripheral blood leukocytes and lower levels in brain, liver and pancreas. |
| 序列相似性 | Belongs to the actin-binding proteins ADF family. Coactosin subfamily. Contains 1 ADF-H domain. |
| 细胞定位 | Cytoplasm > cytoskeleton. |

图片



15% SDS-PAGE showing ab116193 at approximately 18.1kDa (3 μ g).

Please note: All products are "FOR RESEARCH USE ONLY. NOT FOR USE IN DIAGNOSTIC PROCEDURES"

Our Abpromise to you: Quality guaranteed and expert technical support

- Replacement or refund for products not performing as stated on the datasheet
- Valid for 12 months from date of delivery
- Response to your inquiry within 24 hours
- We provide support in Chinese, English, French, German, Japanese and Spanish
- Extensive multi-media technical resources to help you
- We investigate all quality concerns to ensure our products perform to the highest standards

If the product does not perform as described on this datasheet, we will offer a refund or replacement. For full details of the Abpromise, please visit <https://www.abcam.cn/abpromise> or contact our technical team.

Terms and conditions

- Guarantee only valid for products bought direct from Abcam or one of our authorized distributors