

Recombinant human CK1 epsilon protein (ab104024) ab104024

5 图像

描述

产品名称	重组人CK1 epsilon蛋白(ab104024)
生物活性	The Specific activity of ab104024 was determined to be 46 nmol/min/mg.
纯度	> 75 % SDS-PAGE. Purity was determined to be >75% by densitometry. Affinity purified.
表达系统	Baculovirus infected Sf9 cells
Accession	<u>P49674</u>
蛋白长度	Full length protein
无动物成分	No
性质	Recombinant
种属	Human
预测分子量	72 kDa including tags
氨基酸	1 to 416
描述	重组人CK1 epsilon蛋白

技术指标

Our **Abpromise guarantee** covers the use of **ab104024** in the following tested applications.

The application notes include recommended starting dilutions; optimal dilutions/concentrations should be determined by the end user.

应用	Functional Studies SDS-PAGE
形式	Liquid
补充说明	ab91090 (Cow Casein full length protein) can be utilized as a substrate for assessing Kinase activity

制备和贮存

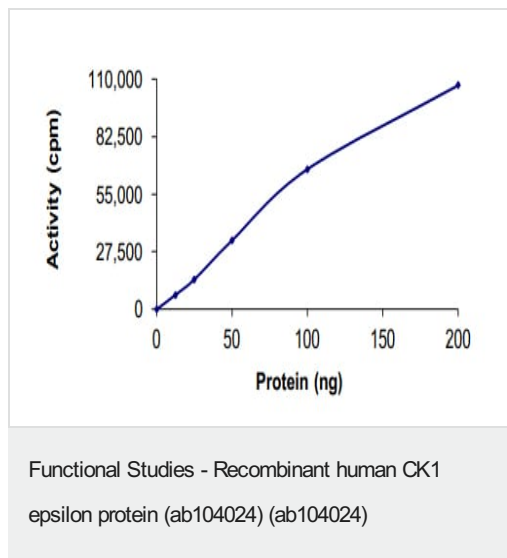
稳定性和存储	Shipped on dry ice. Upon delivery aliquot and store at -80°C. Avoid freeze / thaw cycles. pH: 7.50 Constituents: 0.307% Glutathione, 0.00174% PMSF, 0.00385% DTT, 0.79% Tris HCl, 0.00292% EDTA, 25% Glycerol (glycerin, glycerine), 0.87% Sodium chloride
--------	--

This product is an active protein and may elicit a biological response in vivo, handle with caution.

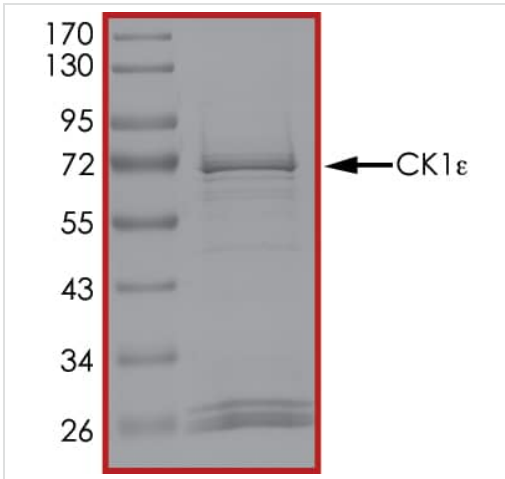
常规信息

功能	Casein kinases are operationally defined by their preferential utilization of acidic proteins such as caseins as substrates. Can phosphorylate a large number of proteins. Participates in Wnt signaling. Phosphorylates DVL1. Central component of the circadian clock. May act as a negative regulator of circadian rhythmicity by phosphorylating PER1 and PER2. Retains PER1 in the cytoplasm. Inhibits cytokine-induced granulocytic differentiation.
组织特异性	Expressed in all tissues examined, including brain, heart, lung, liver, pancreas, kidney, placenta and skeletal muscle. Expressed in monocytes and lymphocytes but not in granulocytes.
序列相似性	Belongs to the protein kinase superfamily. CK1 Ser/Thr protein kinase family. Casein kinase I subfamily. Contains 1 protein kinase domain.
翻译后修饰	Autophosphorylated.
细胞定位	Cytoplasm. Nucleus.

图片

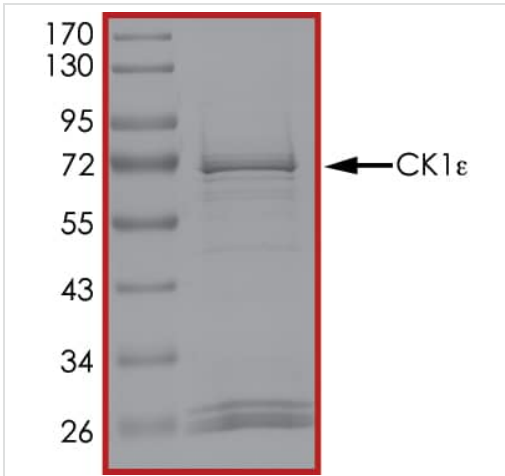


The specific activity of CK1 epsilon (ab104024) was determined to be 39 nmol/min/mg as per activity assay protocol



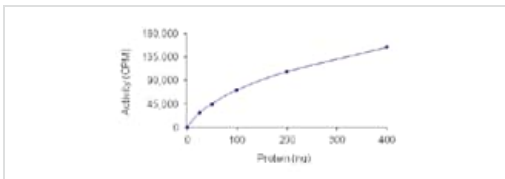
SDS PAGE analysis of ab104024

SDS-PAGE - Recombinant human CK1 epsilon protein (ab104024) (ab104024)



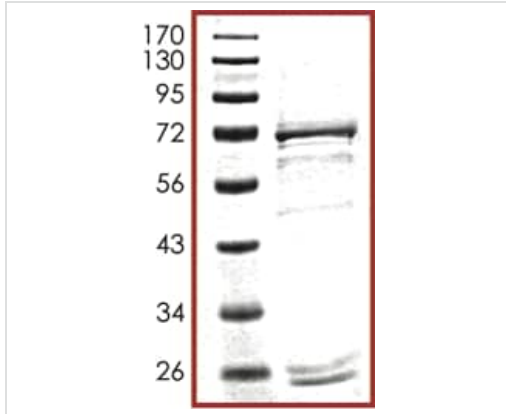
SDS PAGE analysis of ab104024

SDS-PAGE - Recombinant human CK1 epsilon protein (ab104024) (ab104024)



The Specific activity of ab104024 was determined to be 46 nmol/min/mg.

Functional Studies - Recombinant human CK1 epsilon protein (ab104024) (ab104024)



SDS-PAGE showing ab104024 at approximately 72kDa.

SDS-PAGE - Recombinant human CK1 epsilon protein (ab104024) (ab104024)

Please note: All products are "FOR RESEARCH USE ONLY. NOT FOR USE IN DIAGNOSTIC PROCEDURES"

Our Abpromise to you: Quality guaranteed and expert technical support

- Replacement or refund for products not performing as stated on the datasheet
- Valid for 12 months from date of delivery
- Response to your inquiry within 24 hours

- We provide support in Chinese, English, French, German, Japanese and Spanish
- Extensive multi-media technical resources to help you
- We investigate all quality concerns to ensure our products perform to the highest standards

If the product does not perform as described on this datasheet, we will offer a refund or replacement. For full details of the Abpromise, please visit <https://www.abcam.cn/abpromise> or contact our technical team.

Terms and conditions

- Guarantee only valid for products bought direct from Abcam or one of our authorized distributors