

Recombinant Human CDKA1 / DOC1 protein (His tag) ab93647

1 图像

描述	
产品名称	重组人CDKA1 / DOC1蛋白(His tag)
纯度	> 95 % SDS-PAGE. ab93647 is purified using conventional chromatography techniques.
表达系统	Escherichia coli
Accession	<u>O14519-1</u>
蛋白长度	Full length protein
无动物成分	No
性质	Recombinant
种属	Human
序列	MRGSHHHHHH GMASMTGGQQ MGRDLYDDDD KDRWGSMSY KPNLAAHMPA AALNAAGSVH SPSTSMATSS QYRQLLSDYG PPSLGYTQGT GNSQVPQSKY AELLAIIEEL GKEIRPTYAG SKSAMERLKR GIIHARGLVR ECLAETERNA RS
预测分子量	17 kDa including tags
氨基酸	1 to 115
标签	His tag N-Terminus

技术指标	
Our Abpromise guarantee covers the use of ab93647 in the following tested applications.	
The application notes include recommended starting dilutions; optimal dilutions/concentrations should be determined by the end user.	
应用	SDS-PAGE
形式	Liquid

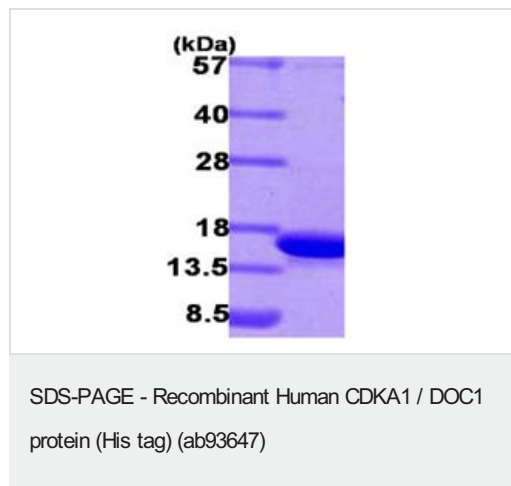
制备和贮存	
稳定性和存储	Shipped at 4°C. Store at +4°C short term (1-2 weeks). Upon delivery aliquot. Store at -20°C or -80°C. Avoid freeze / thaw cycle. pH: 8.00 Constituents: 0.0308% DTT, 0.316% Tris HCl, 50% Glycerol (glycerin, glycerine)

常规信息

序列相似性

Belongs to the CDK2AP family.

图片



15% SDS-PAGE showing ab93647 at approximately 16.6kDa (3μg).

Please note: All products are "FOR RESEARCH USE ONLY. NOT FOR USE IN DIAGNOSTIC PROCEDURES"

Our Abpromise to you: Quality guaranteed and expert technical support

- Replacement or refund for products not performing as stated on the datasheet
- Valid for 12 months from date of delivery
- Response to your inquiry within 24 hours
- We provide support in Chinese, English, French, German, Japanese and Spanish
- Extensive multi-media technical resources to help you
- We investigate all quality concerns to ensure our products perform to the highest standards

If the product does not perform as described on this datasheet, we will offer a refund or replacement. For full details of the Abpromise, please visit <https://www.abcam.cn/abpromise> or contact our technical team.

Terms and conditions

- Guarantee only valid for products bought direct from Abcam or one of our authorized distributors