

Recombinant Human CAPSL protein ab105600

1 图像

描述	
产品名称	重组人CAPSL蛋白
纯度	> 90 % SDS-PAGE. ab105600 is purified using conventional chromatography techniques.
表达系统	Escherichia coli
Accession	<u>Q8WWF8</u>
蛋白长度	Full length protein
无动物成分	No
性质	Recombinant
种属	Human
序列	MGSSHHHHHH SSGLVPRGSH MAGTARHDRE MAIQAKKKLT TATDPIERLR LQCLARGSAG IKGLGRVFRI MDDDNRTLD FKEFMKGLND YAVVMEKEEV EELFQRFDKD GNGTIDFNEF LLTLRPPMSR ARKEVIMQAF RKLDKTGDGV ITIEDLREVY NAKHHPKYQN GEWSEEQVFR KFLDNFDSPY DKDGLVTPEE FMNYYAGVSA SIDTDVYFII MMRTAWKL
预测分子量	26 kDa including tags
氨基酸	1 to 208
标签	His tag N-Terminus

技术指标	
Our Abpromise guarantee covers the use of ab105600 in the following tested applications.	
The application notes include recommended starting dilutions; optimal dilutions/concentrations should be determined by the end user.	
应用	SDS-PAGE Mass Spectrometry
质谱法	MALDI-TOF
形式	Liquid
制备和贮存	

稳定性和存储

Shipped at 4°C. Upon delivery aliquot and store at -20°C or -80°C. Avoid repeated freeze / thaw cycles.

pH: 8.00

Constituents: 0.077% DTT, 0.316% Tris HCl, 20% Glycerol (glycerin, glycerine), 1.16% Sodium chloride

常规信息

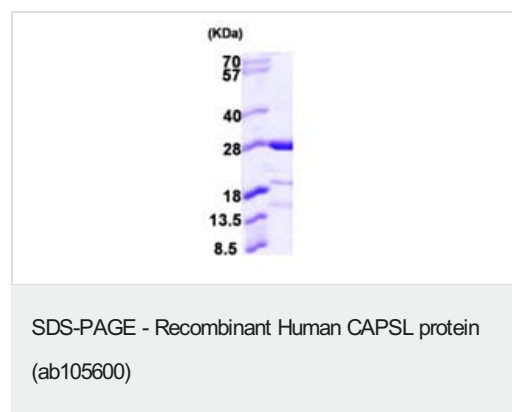
序列相似性

Contains 4 EF-hand domains.

细胞定位

Cytoplasm.

图片



15% SDS-PAGE showing ab105600 (3 µg) at approximately 26.3 kDa.

Please note: All products are "FOR RESEARCH USE ONLY. NOT FOR USE IN DIAGNOSTIC PROCEDURES"

Our Abpromise to you: Quality guaranteed and expert technical support

- Replacement or refund for products not performing as stated on the datasheet
- Valid for 12 months from date of delivery
- Response to your inquiry within 24 hours
- We provide support in Chinese, English, French, German, Japanese and Spanish
- Extensive multi-media technical resources to help you
- We investigate all quality concerns to ensure our products perform to the highest standards

If the product does not perform as described on this datasheet, we will offer a refund or replacement. For full details of the Abpromise, please visit <https://www.abcam.cn/abpromise> or contact our technical team.

Terms and conditions

- Guarantee only valid for products bought direct from Abcam or one of our authorized distributors