

Recombinant human CaMKII delta protein ab84552

2 References **6 图像**

描述

产品名称	重组人CaMKII delta蛋白
生物活性	The specific activity of ab84552 was determined to be 5860 nmol/min/mg.
纯度	> 85 % Densitometry. Affinity purified.
表达系统	Baculovirus infected Sf9 cells
Accession	<u>Q13557</u>
蛋白长度	Full length protein
无动物成分	No
性质	Recombinant
种属	Human
预测分子量	82 kDa including tags
氨基酸	1 to 499
标签	GST tag N-Terminus

技术指标

Our **Abpromise guarantee** covers the use of **ab84552** in the following tested applications.

The application notes include recommended starting dilutions; optimal dilutions/concentrations should be determined by the end user.

应用	Western blot Functional Studies SDS-PAGE
形式	Liquid
补充说明	<u>ab188554</u> (CaMKII peptide) can be utilized as a substrate for assessing Kinase activity

制备和贮存

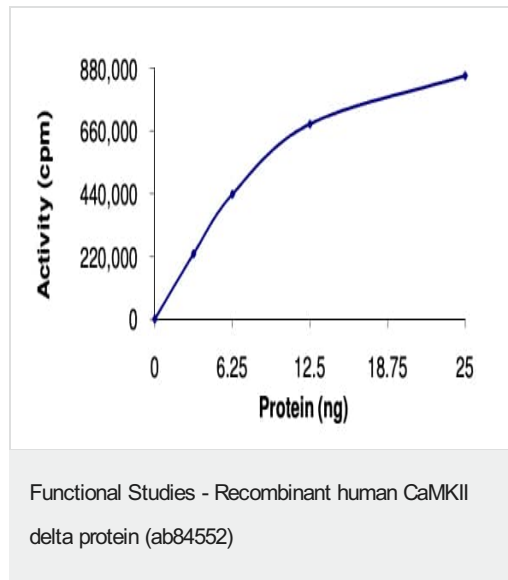
稳定性和存储	Shipped on dry ice. Upon delivery aliquot and store at -80°C. Avoid freeze / thaw cycles. pH: 7.50 Constituents: 0.0038% EGTA, 0.00174% PMSF, 0.00385% DTT, 0.79% Tris HCl, 0.00292% EDTA, 25% Glycerol (glycerin, glycerine), 0.87% Sodium chloride
--------	------------------------------------------------------------------------------------------------------------------------------------------------------------------------------------------------------------------------------------------------------------

This product is an active protein and may elicit a biological response in vivo, handle with caution.

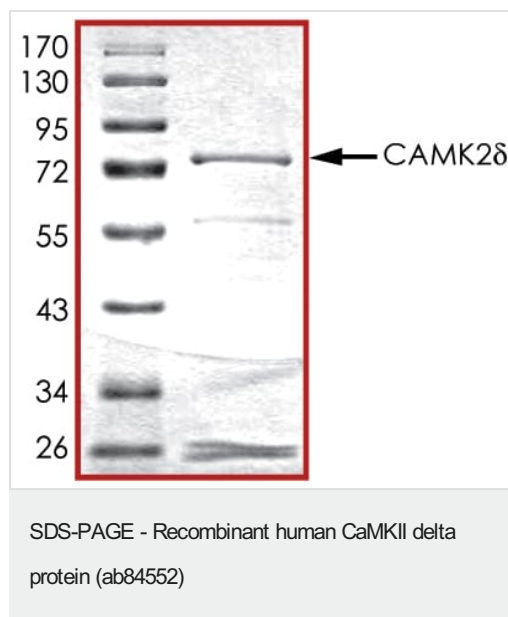
常规信息

功能	CaM-kinase II (CAMK2) is a prominent kinase in the central nervous system that may function in long-term potentiation and neurotransmitter release.
组织特异性	Expressed in cardiac muscle and skeletal muscle. Isoform Delta 3, isoform Delta 2, isoform Delta 8 and isoform Delta 9 are expressed in cardiac muscle. Isoform Delta 11 is expressed in skeletal muscle.
序列相似性	Belongs to the protein kinase superfamily. CAMK Ser/Thr protein kinase family. CaMK subfamily. Contains 1 protein kinase domain.

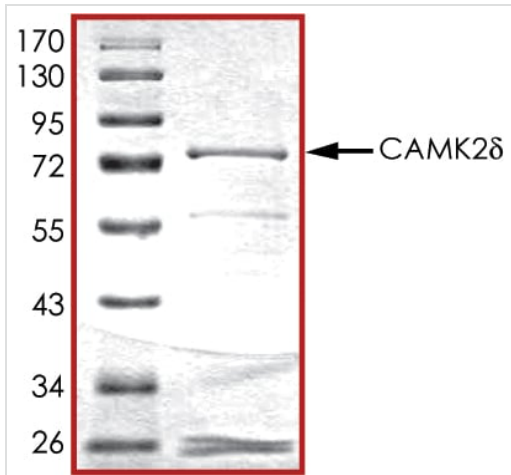
图片



The specific activity of CaMKII delta (ab84552) was determined to be 5300 nmol/min/mg as per activity assay protocol

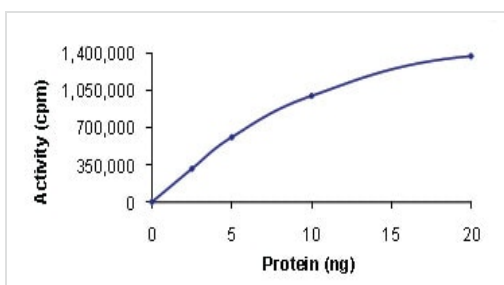


SDS PAGE analysis of ab84552



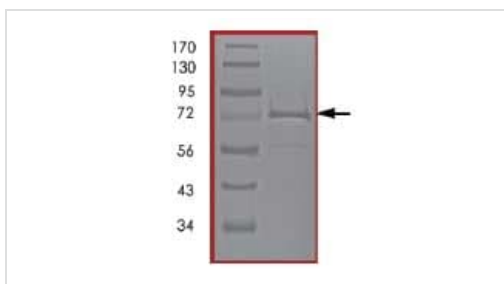
SDS PAGE analysis of ab84552

SDS-PAGE - Recombinant human CaMKII delta protein (ab84552)



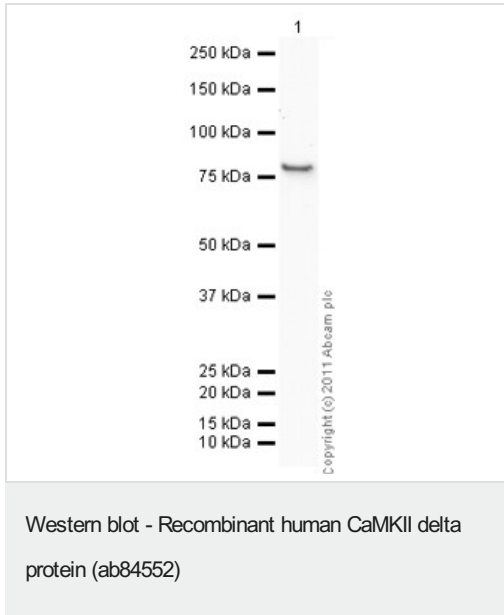
Kinase Assay. Specific activity 5860 nmol/min/mg.

Functional Studies - Recombinant human CaMKII delta protein (ab84552)



SDS-PAGE of ab84552. Approximate MWt 77 kDa.

SDS-PAGE - Recombinant human CaMKII delta protein (ab84552)



Please note: All products are "FOR RESEARCH USE ONLY. NOT FOR USE IN DIAGNOSTIC PROCEDURES"

Our Abpromise to you: Quality guaranteed and expert technical support

- Replacement or refund for products not performing as stated on the datasheet
- Valid for 12 months from date of delivery
- Response to your inquiry within 24 hours
- We provide support in Chinese, English, French, German, Japanese and Spanish
- Extensive multi-media technical resources to help you
- We investigate all quality concerns to ensure our products perform to the highest standards

If the product does not perform as described on this datasheet, we will offer a refund or replacement. For full details of the Abpromise, please visit <https://www.abcam.cn/abpromise> or contact our technical team.

Terms and conditions

- Guarantee only valid for products bought direct from Abcam or one of our authorized distributors