

Recombinant Human Calneuron 1 protein ab101049

1 图像

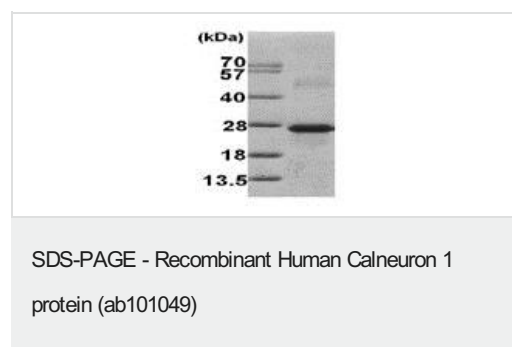
描述	
产品名称	重组人Calneuron 1蛋白
纯度	> 90 % SDS-PAGE. ab101049 is purified using conventional chromatography techniques
表达系统	Escherichia coli
Accession	<b><u>Q9BXU9</u></b>
蛋白长度	Protein fragment
无动物成分	No
性质	Recombinant
种属	Human
序列	<b>MGSSHHHHHH SSGLVPRGSH MPFHVTAGL LYKGNLYNRS LSAGSDSEQL ANISVEELDE IREAFRVLDR DGNGFISKQE LGMAMRSLGY MPSEVELAII MQRDMDGDG QVDFDEFMTI LGPKLVSSEG RDGFLGNTID SIFWQFDMQR ITLEELKHIL YHAFRDHLTM KDIENIIINE EESLNETSGN CQTEFEGVHS QKQNRQTCVR KS</b>
预测分子量	24 kDa including tags
氨基酸	1 to 192
标签	His tag N-Terminus
技术指标	
Our <b><u>Abpromise guarantee</u></b> covers the use of <b>ab101049</b> in the following tested applications.	
The application notes include recommended starting dilutions; optimal dilutions/concentrations should be determined by the end user.	
应用	Mass Spectrometry SDS-PAGE
质谱法	MALDI-TOF
形式	Liquid
制备和贮存	

<b>稳定性和存储</b>	<p>Shipped at 4°C. Upon delivery aliquot and store at -20°C or -80°C. Avoid repeated freeze / thaw cycles.</p> <p>pH: 8.00</p> <p>Constituents: 0.00174% PMSF, 0.0308% DTT, 0.316% Tris HCl, 10% Glycerol (glycerin, glycerine), 0.29% Sodium chloride</p>
---------------	--

## 常规信息

<b>功能</b>	Negatively regulates Golgi-to-plasma membrane trafficking by interacting with PI4KB and inhibiting its activity (By similarity). May play a role in the physiology of neurons and is potentially important in memory and learning.
<b>组织特异性</b>	Brain specific.
<b>序列相似性</b>	Contains 2 EF-hand domains.
<b>结构域</b>	The C-terminal transmembrane domain (TMD) is necessary and sufficient for membrane targeting.
<b>细胞定位</b>	Golgi apparatus, trans-Golgi network membrane. Cytoplasm, perinuclear region. Cell membrane.

## 图片



ab101049 at 3 µg on an SDS-PAGE gel (15%)

**Please note:** All products are "FOR RESEARCH USE ONLY. NOT FOR USE IN DIAGNOSTIC PROCEDURES"

## Our Abpromise to you: Quality guaranteed and expert technical support

- Replacement or refund for products not performing as stated on the datasheet
- Valid for 12 months from date of delivery
- Response to your inquiry within 24 hours
- We provide support in Chinese, English, French, German, Japanese and Spanish
- Extensive multi-media technical resources to help you
- We investigate all quality concerns to ensure our products perform to the highest standards

If the product does not perform as described on this datasheet, we will offer a refund or replacement. For full details of the Abpromise, please visit <https://www.abcam.cn/abpromise> or contact our technical team.

## Terms and conditions

---

- Guarantee only valid for products bought direct from Abcam or one of our authorized distributors