

Recombinant human c-Kit protein (Fc Chimera Active) ab219878

3 图像

描述	
产品名称	重组人c-Kit蛋白(Fc Chimera Active)
生物活性	<p>Measured by its binding ability in a functional ELISA. Immobilized ab219878 at 2 µg/ml (100 µl/well) can bind Mouse SCF, His Tag with a linear range of 0.05-1.2 ng/ml.</p> <p>Measured by its binding ability in a functional ELISA. Immobilized ab219878 at 2 µg/ml (100 µl/well) can bind Biotinylated Mouse SCF with a linear range of 0.25-20 ng/ml.</p> <p>Immobilized ab219878 at 2 µg/mL (100 µL/well) can bind ab219878 with a linear range of 0.4-2 ng/mL (QC tested).</p>
纯度	> 95 % SDS-PAGE.
内毒素水平	< 1.000 Eu/µg
表达系统	HEK 293 cells
Accession	<u>P10721-2</u>
蛋白长度	Protein fragment
无动物成分	No
性质	Recombinant
种属	Human
序列	<p>QPSVSPGEPSPPSIHPGKSDLIVRVGDEIRLLCTDPGFVKWT FEILDETN ENKQNEWITEKAEATNTGKYTCTNKHGLSNSIYVFVRDPAKL FLVDRSLY GKEDNDTLVRCPLTDPEVTNYSLKGCQGKPLPKDLRFIPDPK AGIMIKSV KRAYHRLCLHCSVDQEGKSVLSEKFILKVRPAFKAVPVVSVS KASYLLRE GEEFTVTCTIKDVSSSVYSTWKRENSQTKLQEKYNSWHHGDF NYERQATL TISSARVNDSGVFMCIYANNTFGSANVTTTTLEVVDKGFINIFP MINTTVFV NDGENVDLIVEYEAFPKPEHQWIYMNRTFTDKWEDYPKSEN ESNIRYVS ELHLTRLKGTGGTYTFLVSNSDVNAAIAFNVYVNTKPEILT YDRLVNGM LQCVAAGFPEPTIDWYFCPGTEQRCSASVLPVDVQTLNSSGP</p>

PFGKLVVQ
SSIDSSAFKHNGTVECKAYNDVGKTSAYFNFAFKEQIHPHT

预测分子量	82 kDa including tags
分子量信息	The protein has a calculated MW of 81.9 kDa. The protein migrates as 116-130 kDa under reducing (R) condition (SDS-PAGE) due to glycosylation.
氨基酸	26 to 516
标签	Fc tag C-Terminus
额外的序列信息	Fused with a human IgG1 Fc tag at the C-terminus.

技术指标

Our **Abpromise guarantee** covers the use of **ab219878** in the following tested applications.

The application notes include recommended starting dilutions; optimal dilutions/concentrations should be determined by the end user.

应用	ELISA SDS-PAGE
形式	Lyophilized
补充说明	This product is stable after storage at: -20°C to -70°C for 12 months in lyophilized state; -70°C for 3 months under sterile conditions after reconstitution.

制备和贮存

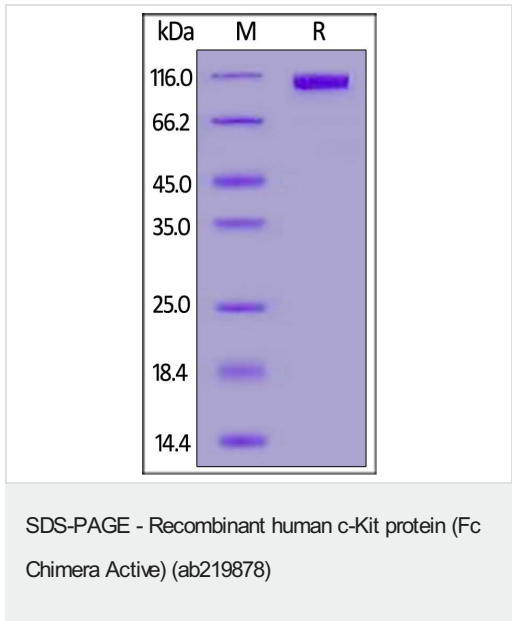
稳定性和存储	Shipped at 4°C. Upon delivery aliquot. Store at -20°C or -80°C. Avoid freeze / thaw cycle. pH: 7.4 Constituents: 0.61% Tris, 0.75% Glycine, 5% Trehalose, L-Arginine, Sodium chloride Lyophilized from 0.22 µm filtered solution. 5-10% trehalose is commonly used for freeze drying, and after reconstitution, the trehalose is mostly about 3-5% This product is an active protein and may elicit a biological response in vivo, handle with caution.
复溶	Reconstitute with sterile deionized water to a concentration of 200 µg/ml.

常规信息

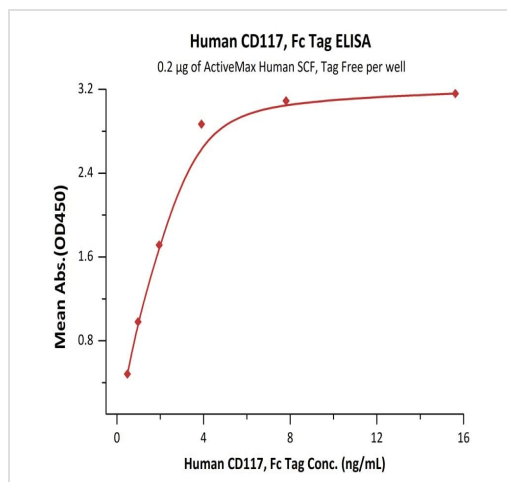
功能	Tyrosine-protein kinase that acts as cell-surface receptor for the cytokine KITLG/SCF and plays an essential role in the regulation of cell survival and proliferation, hematopoiesis, stem cell maintenance, gametogenesis, mast cell development, migration and function, and in melanogenesis. In response to KITLG/SCF binding, KIT can activate several signaling pathways. Phosphorylates PIK3R1, PLCG1, SH2B2/APS and CBL. Activates the AKT1 signaling pathway by phosphorylation of PIK3R1, the regulatory subunit of phosphatidylinositol 3-kinase. Activated KIT also transmits signals via GRB2 and activation of RAS, RAF1 and the MAP kinases MAPK1/ERK2 and/or MAPK3/ERK1. Promotes activation of STAT family members STAT1, STAT3, STAT5A and STAT5B. Activation of PLCG1 leads to the production of the cellular signaling molecules diacylglycerol and inositol 1,4,5-trisphosphate. KIT signaling is modulated by protein phosphatases, and by rapid internalization and degradation of the receptor. Activated KIT
----	--

	<p>promotes phosphorylation of the protein phosphatases PTPN6/SHP-1 and PTPRU, and of the transcription factors STAT1, STAT3, STAT5A and STAT5B. Promotes phosphorylation of PIK3R1, CBL, CRK (isoform Crk-II), LYN, MAPK1/ERK2 and/or MAPK3/ERK1, PLCG1, SRC and SHC1.</p>
组织特异性	<p>Isoform 1 and isoform 2 are detected in spermatogonia and Leydig cells. Isoform 3 is detected in round spermatids, elongating spermatids and spermatozoa (at protein level). Widely expressed. Detected in the hematopoietic system, the gastrointestinal system, in melanocytes and in germ cells.</p>
疾病相关	<p>Piebald trait Gastrointestinal stromal tumor Testicular germ cell tumor Leukemia, acute myelogenous</p>
序列相似性	<p>Belongs to the protein kinase superfamily. Tyr protein kinase family. CSF-1/PDGF receptor subfamily. Contains 5 Ig-like C2-type (immunoglobulin-like) domains. Contains 1 protein kinase domain.</p>
翻译后修饰	<p>Ubiquitinated by SOCS6. KIT is rapidly ubiquitinated after autophosphorylation induced by KITLG/SCF binding, leading to internalization and degradation. Autophosphorylated on tyrosine residues. KITLG/SCF binding enhances autophosphorylation. Isoform 1 shows low levels of tyrosine phosphorylation in the absence of added KITLG/SCF (in vitro). Kinase activity is down-regulated by phosphorylation on serine residues by protein kinase C family members. Phosphorylation at Tyr-568 is required for interaction with PTPN11/SHP-2, CRK (isoform Crk-II) and members of the SRC tyrosine-protein kinase family. Phosphorylation at Tyr-570 is required for interaction with PTPN6/SHP-1. Phosphorylation at Tyr-703, Tyr-823 and Tyr-936 is important for interaction with GRB2. Phosphorylation at Tyr-721 is important for interaction with PIK3R1. Phosphorylation at Tyr-823 and Tyr-936 is important for interaction with GRB7.</p>
细胞定位	<p>Cell membrane and Cytoplasm. Detected in the cytoplasm of spermatozoa, especially in the equatorial and subacrosomal region of the sperm head.</p>

图片

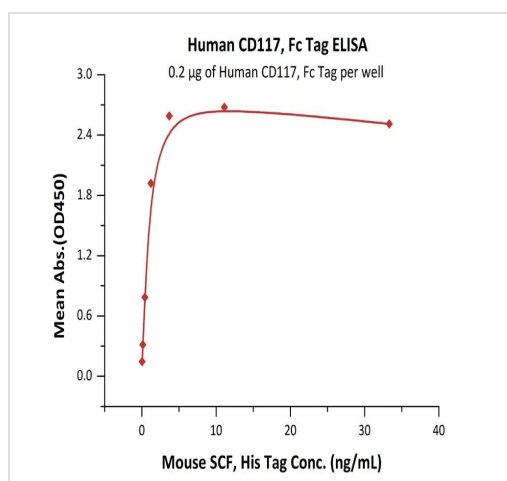


Human CD117, Fc Tag on SDS-PAGE under reducing (R) condition. The gel was stained overnight with Coomassie Blue. The purity of the protein is greater than 95%.



Immobilized ActiveMax Human SCF, Tag Free at 2 µg/mL (100 µL/well) can bind Human CD117, Fc Tag with a linear range of 0.4-2 ng/mL (QC tested).

ELISA - Recombinant human c-Kit protein (Fc Chimera Active) (ab219878)



Human CD117, Fc Tag (ab219878) at 2 µg/mL (100 µL/well) can bind Mouse SCF, His Tag (**ab221333**) with a linear range of 0.05-1 ng/mL.

ELISA - Recombinant human c-Kit protein (Fc Chimera Active) (ab219878)

Please note: All products are "FOR RESEARCH USE ONLY. NOT FOR USE IN DIAGNOSTIC PROCEDURES"

Our Abpromise to you: Quality guaranteed and expert technical support

- Replacement or refund for products not performing as stated on the datasheet
- Valid for 12 months from date of delivery
- Response to your inquiry within 24 hours
- We provide support in Chinese, English, French, German, Japanese and Spanish
- Extensive multi-media technical resources to help you
- We investigate all quality concerns to ensure our products perform to the highest standards

If the product does not perform as described on this datasheet, we will offer a refund or replacement. For full details of the Abpromise, please visit <https://www.abcam.cn/abpromise> or contact our technical team.

Terms and conditions

- Guarantee only valid for products bought direct from Abcam or one of our authorized distributors