

Recombinant Human BST2/Tetherin protein ab114390

1 图像

描述		
产品名称	重组人BST2/Tetherin蛋白	
表达系统	Wheat germ	
Accession	<u>Q10589</u>	
蛋白长度	Protein fragment	
无动物成分	No	
性质	Recombinant	
种属	Human	
序列	PLIIFTIKANSEACRDGLRAVMECRNVTHLLQQELTEAQKGF QDVEAQAA TCNHTVMALMASLDAEKAQGQKKVEELEGEITTLNHKLQDAS AEVERLRR ENQVLSVRIADKKYYPSSQDSSSAAAPQLLIVLLGLSALLQ	
预测分子量	41 kDa including tags	
氨基酸	40 to 180	

技术指标	
Our <b>Abpromise guarantee</b> covers the use of <b>ab114390</b> in the following tested applications.	
The application notes include recommended starting dilutions; optimal dilutions/concentrations should be determined by the end user.	
应用	Western blot SDS-PAGE ELISA
形式	Liquid
补充说明	This product was previously labelled as BST2.

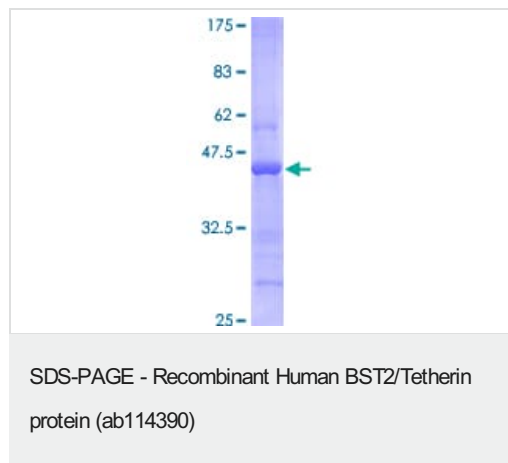
制备和贮存	
稳定性和存储	Shipped on dry ice. Upon delivery aliquot and store at -80°C. Avoid freeze / thaw cycles. pH: 8.00

Constituents: 0.3% Glutathione, 0.79% Tris HCl

## 常规信息

功能	May be involved in the sorting of secreted proteins (By similarity). May be involved in pre-B-cell growth. Antiretroviral defense protein, that blocks release of retrovirus from the cell surface. Depleted upon HIV-1 infection by viral VPU protein through 20S proteasome degradation. Depleted upon infection by human Kaposi's sarcoma-associated herpesvirus (KSHV) through ubiquitination and subsequent degradation. May play a role in B-cell activation in rheumatoid arthritis.
组织特异性	Predominantly expressed in liver, lung, heart and placenta. Lower levels in pancreas, kidney, skeletal muscle and brain. Overexpressed in multiple myeloma cells. Highly expressed during B-cell development, from pro-B precursors to plasma cells. Highly expressed on T-cells, monocytes, NK cells and dendritic cells (at protein level).
序列相似性	Belongs to the tetherin family.
结构域	The extracellular coiled coil domain is important for virus retention at the cell surface and prevention of virus spreading.
翻译后修饰	Monoubiquitinated by KSHV E3 ubiquitin-protein ligase K5, leading to its targeting to late endosomes and degradation.
细胞定位	Golgi apparatus > trans-Golgi network. Cell membrane. Cell membrane. Late endosome. Targeted to late endosomes upon KSHV infection and subsequent ubiquitination. Targeted to the trans-Golgi network by viral VPU protein.

## 图片



ab114390 analysed on a 12.5% SDS-PAGE Stained with Coomassie Blue.

**Please note:** All products are "FOR RESEARCH USE ONLY. NOT FOR USE IN DIAGNOSTIC PROCEDURES"

## Our Abpromise to you: Quality guaranteed and expert technical support

- Replacement or refund for products not performing as stated on the datasheet
- Valid for 12 months from date of delivery
- Response to your inquiry within 24 hours

- We provide support in Chinese, English, French, German, Japanese and Spanish
- Extensive multi-media technical resources to help you
- We investigate all quality concerns to ensure our products perform to the highest standards

If the product does not perform as described on this datasheet, we will offer a refund or replacement. For full details of the Abpromise, please visit <https://www.abcam.cn/abpromise> or contact our technical team.

#### **Terms and conditions**

---

- Guarantee only valid for products bought direct from Abcam or one of our authorized distributors