

Recombinant Human BNP protein ab87200

2 References 1 图像

描述	
产品名称	重组人BNP蛋白
纯度	> 85 % SDS-PAGE. ab87200 is purified using conventional chromatography techniques.
内毒素水平	< 1.000 Eu/μg
表达系统	Escherichia coli
Accession	<u>NP_002512.1</u>
蛋白长度	Protein fragment
无动物成分	No
性质	Recombinant
种属	Human
序列	MGSSHHHHHH SSGLVPRGSH MHPLGSPGSA SDLETSGLQE QRNHLQGKLS ELQVEQTSLE PLQESPRPTG VWKSREVATE GIRGHRKMVL YTLRAPRSPK MVQGSGCFGR KMDRISSSSG LGCKVLRRH
预测分子量	14 kDa
实际分子量	14 kDa
氨基酸	27 to 132
额外的序列信息	His-tag

技术指标	
Our Abpromise guarantee covers the use of ab87200 in the following tested applications.	
The application notes include recommended starting dilutions; optimal dilutions/concentrations should be determined by the end user.	
应用	SDS-PAGE
形式	Liquid

制备和贮存	
稳定性和存储	Shipped at 4°C. Upon delivery aliquot. Store at -20°C or -80°C. Avoid freeze / thaw cycle. pH: 7.40

Constituents: PBS, 40% Glycerol (glycerin, glycerine), 0.03% (R*,R*)-1,4-Dimercaptobutan-2,3-diol, 0.002% PMSF, 0.029% EDTA

常规信息

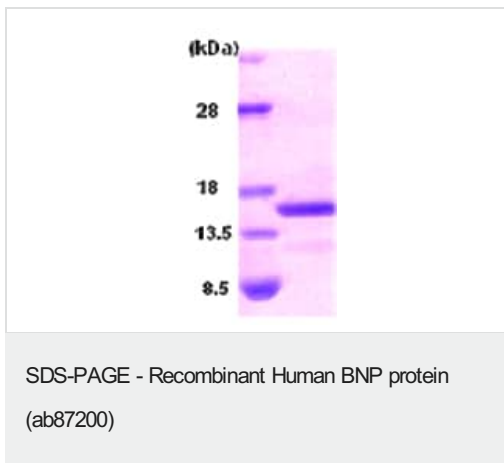
相关性

Brain natriuretic peptide (BNP) circulates in blood as a peptide hormone with natriuretic, vasodilatory and renin inhibitory properties. BNP is secreted predominantly by the left ventricular myocytes in response to volume expansion and pressure overload. BNP belongs to a family of structurally similar peptide hormones, which includes atrial natriuretic peptide (ANP), BNP, C type natriuretic peptide (CNP) and urodilatin. These peptides are characterized by a common 17 amino acid ring structure with a disulfide bond between two cysteine residues. This ring structure shows high homology between different natriuretic peptides (eleven of the 17 amino acid residues are homologous in the ring of each of the natriuretic peptides). BNP is a 32 amino acid peptide with disulfide bond between the cysteine residues Cys10 and Cys26. In earlier studies it has been demonstrated that BNP concentration in blood increases with the severity of congestive heart failure. Quantitative measurement of BNP in blood provides an objective indicator of congestive heart failure severity.

细胞定位

Secreted

图片



15% SDS-PAGE showing ab87200 at approximately 14kDa (3μg).

Please note: All products are "FOR RESEARCH USE ONLY. NOT FOR USE IN DIAGNOSTIC PROCEDURES"

Our Abpromise to you: Quality guaranteed and expert technical support

- Replacement or refund for products not performing as stated on the datasheet
- Valid for 12 months from date of delivery
- Response to your inquiry within 24 hours
- We provide support in Chinese, English, French, German, Japanese and Spanish
- Extensive multi-media technical resources to help you
- We investigate all quality concerns to ensure our products perform to the highest standards

If the product does not perform as described on this datasheet, we will offer a refund or replacement. For full details of the Abpromise,

please visit <https://www.abcam.cn/abpromise> or contact our technical team.

Terms and conditions

- Guarantee only valid for products bought direct from Abcam or one of our authorized distributors