

Recombinant human BMPR1A protein ab105907

5 图像

描述

产品名称	重组人BMPR1A蛋白
生物活性	The Specific activity of ab105907 was determined to be 1.2 nmol/min/mg.
纯度	> 90 % Densitometry. Purity was determined to be >90% by densitometry. Affinity purified.
表达系统	Baculovirus infected Sf9 cells
Accession	<u>P36894</u>
蛋白长度	Protein fragment
无动物成分	No
性质	Recombinant
种属	Human
预测分子量	66 kDa including tags
氨基酸	187 to 532

技术指标

Our **Abpromise guarantee** covers the use of **ab105907** in the following tested applications.

The application notes include recommended starting dilutions; optimal dilutions/concentrations should be determined by the end user.

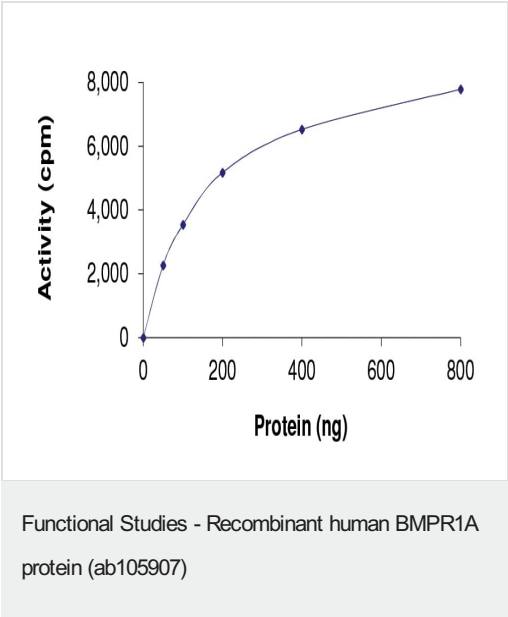
应用	Western blot Functional Studies
形式	Liquid
补充说明	<u>ab204884</u> (Smad3 peptide) can be utilized as a substrate for assessing kinase activity

制备和贮存

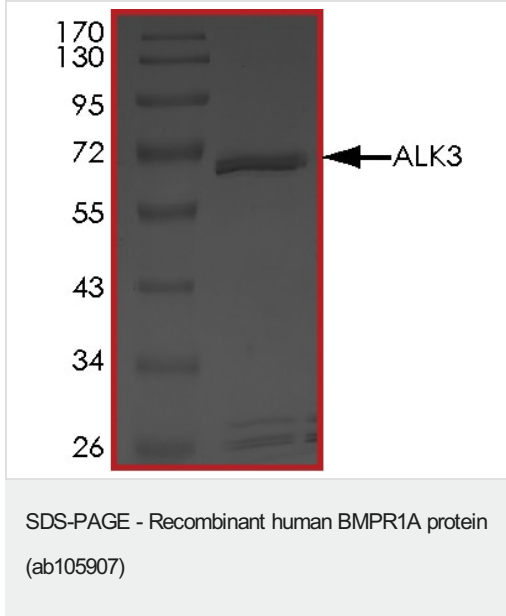
稳定性和存储	Shipped on dry ice. Upon delivery aliquot and store at -80°C. Avoid freeze / thaw cycles. pH: 7.50 Constituents: 0.307% Glutathione, 0.00174% PMSF, 0.00385% DTT, 0.79% Tris HCl, 0.00292% EDTA, 25% Glycerol (glycerin, glycerine), 0.87% Sodium chloride This product is an active protein and may elicit a biological response in vivo, handle with caution.
--------	--

常规信息	
功能	On ligand binding, forms a receptor complex consisting of two type II and two type I transmembrane serine/threonine kinases. Type II receptors phosphorylate and activate type I receptors which autophosphorylate, then bind and activate SMAD transcriptional regulators. Receptor for BMP2, BMP4, GDF5 and GDF6. Positively regulates chondrocyte differentiation through GDF5 interaction. Mediates induction of adipogenesis by GDF6.
组织特异性	Highly expressed in skeletal muscle.
疾病相关	Juvenile polyposis syndrome Polyposis syndrome, mixed hereditary 2 A microdeletion of chromosome 10q23 involving BMPR1A and PTEN is a cause of chromosome 10q23 deletion syndrome, which shows overlapping features of the following three disorders: Bannayan-Zonana syndrome, Cowden disease and juvenile polyposis syndrome.
序列相似性	Belongs to the protein kinase superfamily. TKL Ser/Thr protein kinase family. TGFB receptor subfamily. Contains 1 GS domain. Contains 1 protein kinase domain.
细胞定位	Membrane.

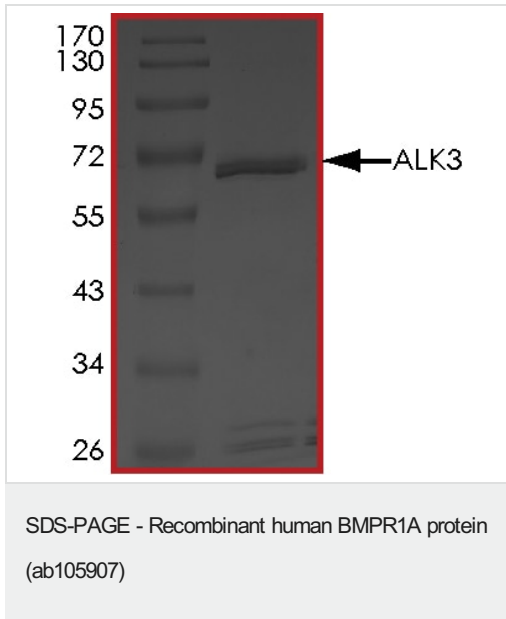
图片



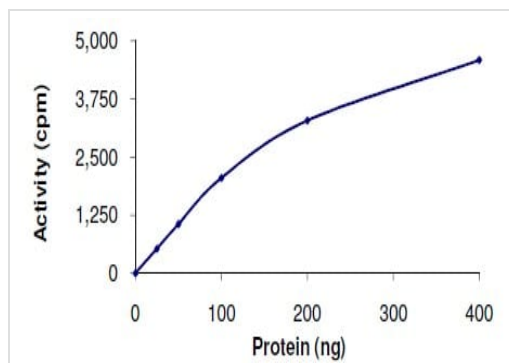
The specific activity of BMPR1A (ab105907) was determined to be 1.4 nmol/min/mg as per activity assay protocol



SDS PAGE analysis of ab105907

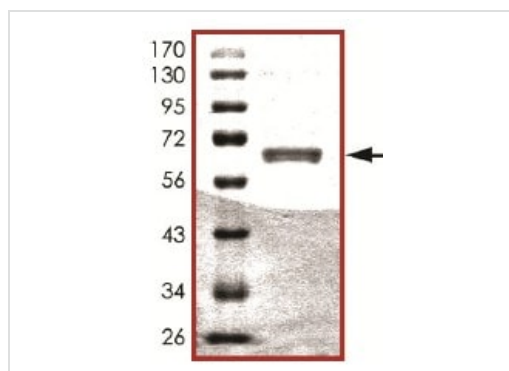


SDS PAGE analysis of ab105907



Kinase Assay demonstrating specific activity of ab105907 at 1.2 nmol/min/mg.

Functional Studies - Recombinant human BMPR1A protein (ab105907)



SDS-PAGE showing ab105907 at approximately 66kDa.

SDS-PAGE - Recombinant human BMPR1A protein (ab105907)

Please note: All products are "FOR RESEARCH USE ONLY. NOT FOR USE IN DIAGNOSTIC PROCEDURES"

Our Abpromise to you: Quality guaranteed and expert technical support

- Replacement or refund for products not performing as stated on the datasheet
- Valid for 12 months from date of delivery
- Response to your inquiry within 24 hours
- We provide support in Chinese, English, French, German, Japanese and Spanish
- Extensive multi-media technical resources to help you
- We investigate all quality concerns to ensure our products perform to the highest standards

If the product does not perform as described on this datasheet, we will offer a refund or replacement. For full details of the Abpromise, please visit <https://www.abcam.cn/abpromise> or contact our technical team.

Terms and conditions

- Guarantee only valid for products bought direct from Abcam or one of our authorized distributors