

Recombinant Human BIN1 protein ab98238

1 图像

描述	
产品名称	重组人BIN1蛋白
纯度	> 90 % SDS-PAGE. ab98238 was purified using conventional chromatography techniques.
表达系统	Escherichia coli
Accession	<u>O00499-7</u>
蛋白长度	Full length protein
无动物成分	No
性质	Recombinant
种属	Human
序列	MGSSHHHHHHSSGLVPRGSHMAEMSGKGVTAGKIASNVQKKL TRAQEKVL QKLGKADETKDEQFEQCVQNFNKQLTEGTRLQKDLRTYLASV KAMHEASK KLNECLQEVYEPDWPGRDEANKIAENNDLLWMDYHQKLVDQA LLTMDTYL GQFPDIKSRIAKRGRKLVLDYDSARHHYESLQTAKKKDEAKIA KAEHEELIK AQKVFEEMNVDLQEELPSLWNSRVGFYVNTFQSIAGLEENFH KEMSKLNQ NLNDVLVGLEKQHGSNTFTVKAQPSDNAPAKGNKSPSPDG PAATPEIR VNHEPEPAGGATPGATLPKSPSQPAEASEVAGGTQPAAGAQE PGETAASE AASSSLPAVVVETFPATVNGTVEGGSGAGRLDLPPGFMFKVQ AQHDYTAT DTDELQLRAGDVVLVIPFQNPEEQDEGWLMGVKESDWNQHK LEKCRGVF PENFTERVP
预测分子量	50 kDa including tags
氨基酸	1 to 439
标签	His tag N-Terminus
技术指标	

Our **Abpromise guarantee** covers the use of **ab98238** in the following tested applications.

The application notes include recommended starting dilutions; optimal dilutions/concentrations should be determined by the end user.

应用	SDS-PAGE
	Mass Spectrometry
质谱法	MALDI-TOF
形式	Liquid

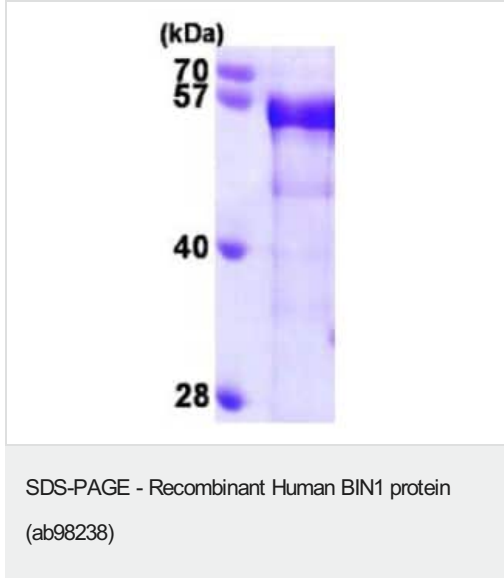
制备和贮存

稳定性和存储	Shipped at 4°C. Store at +4°C short term (1-2 weeks). Upon delivery aliquot. Store at -20°C or -80°C. Avoid freeze / thaw cycle. pH: 8.00 Constituents: 0.0154% DTT, 0.316% Tris HCl, 10% Glycerol (glycerin, glycerine)
--------	--

常规信息

功能	May be involved in regulation of synaptic vesicle endocytosis. May act as a tumor suppressor and inhibits malignant cell transformation.
组织特异性	Ubiquitous. Highest expression in the brain and muscle. Isoform IIA is expressed only in the brain where it is concentrated in axon initial segments and nodes of Ranvier. Isoform BIN1 is widely expressed with highest expression in skeletal muscle.
疾病相关	Defects in BIN1 are the cause of centronuclear myopathy autosomal recessive (ARCNM) [MIM:255200]; also known as autosomal recessive myotubular myopathy. Centronuclear myopathies are congenital muscle disorders characterized by progressive muscular weakness and wasting involving mainly limb girdle, trunk, and neck muscles. It may also affect distal muscles. Weakness may be present during childhood or adolescence or may not become evident until the third decade of life. Ptosis is a frequent clinical feature. The most prominent histopathologic features include high frequency of centrally located nuclei in muscle fibers not secondary to regeneration, radial arrangement of sarcoplasmic strands around the central nuclei, and predominance and hypotrophy of type 1 fibers.
序列相似性	Contains 1 BAR domain. Contains 1 SH3 domain.
翻译后修饰	Phosphorylated by protein kinase C.
细胞定位	Cytoplasm and Nucleus.

图片



15% SDS-PAGE analysis of 3µg ab98238

Please note: All products are "FOR RESEARCH USE ONLY. NOT FOR USE IN DIAGNOSTIC PROCEDURES"

Our Abpromise to you: Quality guaranteed and expert technical support

- Replacement or refund for products not performing as stated on the datasheet
- Valid for 12 months from date of delivery
- Response to your inquiry within 24 hours
- We provide support in Chinese, English, French, German, Japanese and Spanish
- Extensive multi-media technical resources to help you
- We investigate all quality concerns to ensure our products perform to the highest standards

If the product does not perform as described on this datasheet, we will offer a refund or replacement. For full details of the Abpromise, please visit <https://www.abcam.cn/abpromise> or contact our technical team.

Terms and conditions

- Guarantee only valid for products bought direct from Abcam or one of our authorized distributors