

# Recombinant Human beta Tubulin protein ab70187

[3 References](#) [2 图像](#)

### 描述

产品名称	重组人beta Tubulin蛋白
纯度	> 70 % Densitometry. Purity is lot specific. Please contact our technical Support team for details.
表达系统	Escherichia coli
Accession	<b><u>P07437</u></b>
蛋白长度	Full length protein
无动物成分	No
性质	Recombinant
种属	Human
预测分子量	76 kDa including tags
氨基酸	1 to 444
标签	GST tag N-Terminus

### 技术指标

Our **Abpromise guarantee** covers the use of **ab70187** in the following tested applications.  
The application notes include recommended starting dilutions; optimal dilutions/concentrations should be determined by the end user.

应用	Western blot SDS-PAGE
形式	Liquid

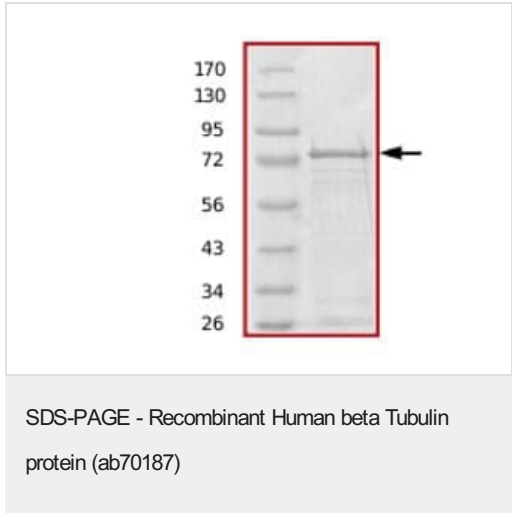
### 制备和贮存

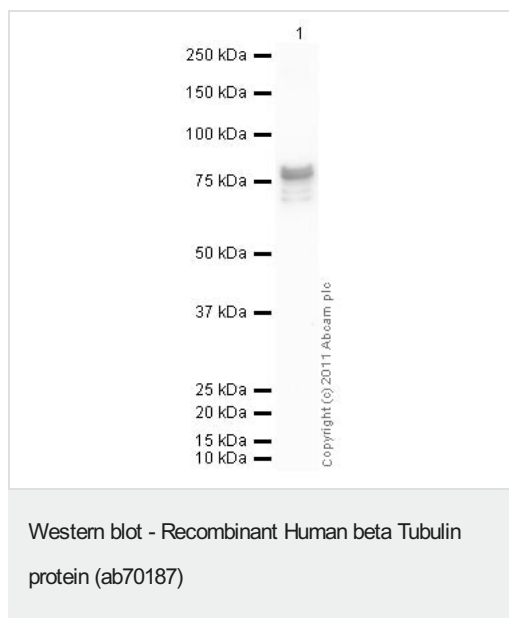
稳定性和存储	Shipped on dry ice. Upon delivery aliquot and store at -80°C. Avoid freeze / thaw cycles. pH: 7.50 Constituents: 0.002% PMSF, 0.004% DTT, 0.79% Tris HCl, 25% Glycerol (glycerin, glycerine), 0.88% Sodium chloride, 0.31% Glutathione, 0.003% EDTA
--------	---

### 常规信息

功能	Tubulin is the major constituent of microtubules. It binds two moles of GTP, one at an exchangeable site on the beta chain and one at a non-exchangeable site on the alpha chain.
组织特异性	Ubiquitously expressed with highest levels in spleen, thymus and immature brain.
疾病相关	Cortical dysplasia, complex, with other brain malformations 6 Skin creases, congenital symmetric circumferential, 1
序列相似性	Belongs to the tubulin family.
结构域	The highly acidic C-terminal region may bind cations such as calcium.
翻译后修饰	<p>Some glutamate residues at the C-terminus are polyglutamylated, resulting in polyglutamate chains on the gamma-carboxyl group (PubMed:26875866). Polyglutamylation plays a key role in microtubule severing by spastin (SPAST). SPAST preferentially recognizes and acts on microtubules decorated with short polyglutamate tails: severing activity by SPAST increases as the number of glutamates per tubulin rises from one to eight, but decreases beyond this glutamylation threshold (PubMed:26875866).</p> <p>Some glutamate residues at the C-terminus are monoglycylated but not polyglycylated due to the absence of functional TTLL10 in human. Monoglycylation is mainly limited to tubulin incorporated into axonemes (cilia and flagella). Both polyglutamylation and monoglycylation can coexist on the same protein on adjacent residues, and lowering glycylation levels increases polyglutamylation, and reciprocally. The precise function of monoglycylation is still unclear.</p> <p>Phosphorylated on Ser-172 by CDK1 during the cell cycle, from metaphase to telophase, but not in interphase. This phosphorylation inhibits tubulin incorporation into microtubules.</p>
细胞定位	Cytoplasm, cytoskeleton.

图片





**Please note:** All products are "FOR RESEARCH USE ONLY. NOT FOR USE IN DIAGNOSTIC PROCEDURES"

### Our Abpromise to you: Quality guaranteed and expert technical support

---

- Replacement or refund for products not performing as stated on the datasheet
- Valid for 12 months from date of delivery
- Response to your inquiry within 24 hours
- We provide support in Chinese, English, French, German, Japanese and Spanish
- Extensive multi-media technical resources to help you
- We investigate all quality concerns to ensure our products perform to the highest standards

If the product does not perform as described on this datasheet, we will offer a refund or replacement. For full details of the Abpromise, please visit <https://www.abcam.cn/abpromise> or contact our technical team.

### Terms and conditions

---

- Guarantee only valid for products bought direct from Abcam or one of our authorized distributors