

# Recombinant Human Beclin 1 protein ab137161

[3 References](#) [1 图像](#)

### 描述

<b>产品名称</b>	重组人Beclin 1蛋白
<b>纯度</b>	> 85 % SDS-PAGE. ab137161 was purified using conventional chromatography, after refolding of the isolated inclusion bodies in a renaturation buffer.
<b>表达系统</b>	Escherichia coli
<b>Accession</b>	<b><u>Q14457</u></b>
<b>蛋白长度</b>	Full length protein
<b>无动物成分</b>	No
<b>性质</b>	Recombinant
<b>种属</b>	Human
<b>序列</b>	<pre> MGSSHHHHHH SSGLVPRGSH MEGSKTSNNS TMQVSFVCQR CSQPLKLDTS FKILDRVTIQ ELTAPLLTTA QAKPGETQEE ETNSGEEPFI ETPRQDGVSF RFIPPARMMS TESANSFTLI GEASDGGTME NLSRRLKVTG DLFDIMSGQT DVDHPLCEEC TDTLLDQLDT QLNVTENECQ NYKRCLEILE QMNEDDSEQL QMELKELALE EERLIQELED VEKNRKIVAE NLEKVQAEAE RLDQEEAQYQ REYSEFKRQQ LELDDELKSV ENQMRYAQTQ LDKLKKTNVF NATFHIWHSG QFGTINNFRL GRLPSVPVEW NEINAAWGQT VLLLHALANK MGLKFQRYRL VPYGNHSYLE SLTDKSKELP LYCSGGLRFF WDNKFDHAMV AFLDCVQQFK EEVEKGETRF CLPYRMDVEK GKI EDTGGSG GSYSIKTQFN SEEQWTKALK FMLTNLKWGL AWPSSQFYNK </pre>
<b>预测分子量</b>	54 kDa including tags
<b>氨基酸</b>	1 to 450
<b>标签</b>	His tag N-Terminus

### 技术指标

Our [Abpromise guarantee](#) covers the use of **ab137161** in the following tested applications.

The application notes include recommended starting dilutions; optimal dilutions/concentrations should be determined by the end user.

<b>应用</b>	Mass Spectrometry
	SDS-PAGE
<b>质谱法</b>	MALDI-TOF
<b>形式</b>	Liquid

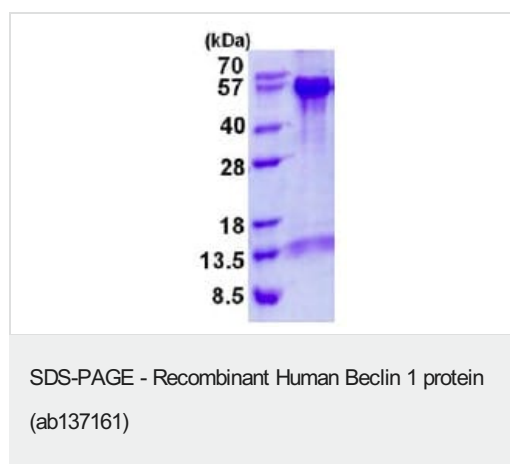
### 制备和贮存

<b>稳定性和存储</b>	Shipped at 4°C. Store at +4°C short term (1-2 weeks). Upon delivery aliquot. Store at -20°C or -80°C. Avoid freeze / thaw cycle.  pH: 8.5 Constituents: 0.02% DTT, 0.32% Tris HCl, 10% Glycerol (glycerin, glycerine), 0.88% Sodium chloride
---------------	---

### 常规信息

<b>功能</b>	Plays a central role in autophagy (By similarity). May play a role in antiviral host defense. Protects against infection by a neurovirulent strain of Sindbis virus.
<b>组织特异性</b>	Ubiquitous.
<b>序列相似性</b>	Belongs to the beclin family.
<b>细胞定位</b>	Golgi apparatus > trans-Golgi network membrane. Interaction with ATG14 promotes translocation to autophagosomes. Expressed in dendrites and cell bodies of cerebellar Purkinje cells.

### 图片



15% SDS-PAGE analysis of ab137161 (3µg)

**Please note:** All products are "FOR RESEARCH USE ONLY. NOT FOR USE IN DIAGNOSTIC PROCEDURES"

### Our Abpromise to you: Quality guaranteed and expert technical support

- Replacement or refund for products not performing as stated on the datasheet
- Valid for 12 months from date of delivery

- Response to your inquiry within 24 hours
- We provide support in Chinese, English, French, German, Japanese and Spanish
- Extensive multi-media technical resources to help you
- We investigate all quality concerns to ensure our products perform to the highest standards

If the product does not perform as described on this datasheet, we will offer a refund or replacement. For full details of the Abpromise, please visit <https://www.abcam.cn/abpromise> or contact our technical team.

### **Terms and conditions**

---

- Guarantee only valid for products bought direct from Abcam or one of our authorized distributors