

Recombinant Human Bcl10 protein ab124575

1 图像

描述

产品名称	重组人Bcl10蛋白	
纯度	> 85 % SDS-PAGE. ab124575 is purified using conventional chromatography techniques.	
表达系统	Escherichia coli	
Accession	<u>O95999</u>	
蛋白长度	Full length protein	
无动物成分	No	
性质	Recombinant	
种属	Human	
序列		MGSSHHHHHH SGLVPRGSH MGSMEPTAP SLTEEDLTEV KKDALENLRV YLCEKIIAER HFDHLRAKKI LSREDTEEIS CRTSSRKRAK KLLDYLQENP KGLDTLVESI RREKTQNFLI QKITDEVKLL RNIKLEHLKG LKSSCEPFP DGATNNLSRS NSDESNFSEK LRASTVMYHP EGESSTTPFF STNSSLNLPV LEVGRTEINTI FSSTTLPRPG DPGAPPLPPD LQLEEEGTCA NSSEMFLPLR SRTVSRQ
预测分子量	29 kDa including tags	
氨基酸	1 to 233	
标签	His tag N-Terminus	

技术指标

Our **Abpromise guarantee** covers the use of **ab124575** in the following tested applications.

The application notes include recommended starting dilutions; optimal dilutions/concentrations should be determined by the end user.

应用	SDS-PAGE Mass Spectrometry
质谱法	MALDI-TOF
形式	Liquid

制备和贮存

稳定性和存储

Shipped at 4°C. Store at +4°C short term (1-2 weeks). Upon delivery aliquot. Store at -20°C or -80°C. Avoid freeze / thaw cycle.

pH: 8.00

Constituents: 0.02% DTT, 0.32% Tris HCl, 10% Glycerol (glycerin, glycerine), 0.29% Sodium chloride

常规信息

功能

Promotes apoptosis, pro-caspase-9 maturation and activation of NF-kappa-B via NIK and IKK. May be an adapter protein between upstream TNFR1-TRADD-RIP complex and the downstream NIK-IKK-IKAP complex. Is a substrate for MALT1.

组织特异性

Ubiquitous.

疾病相关

Note=A chromosomal aberration involving BCL10 is recurrent in low-grade mucosa-associated lymphoid tissue (MALT lymphoma). Translocation t(1;14)(p22;q32). Although the BCL10/IgH translocation leaves the coding region of BCL10 intact, frequent BCL10 mutations could be attributed to the Ig somatic hypermutation mechanism resulting in nucleotide transitions.

Note=Defects in BCL10 are involved in various types of cancer.

序列相似性

Contains 1 CARD domain.

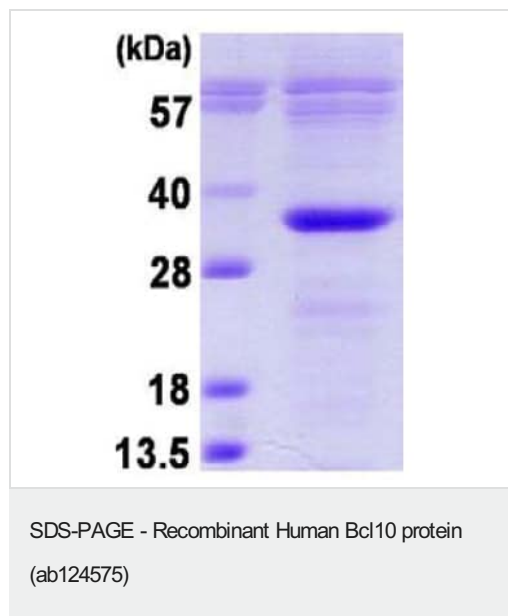
翻译后修饰

Phosphorylated. Phosphorylation results in dissociation from TRAF2 and binding to BIRC2/c-IAP2.

细胞定位

Cytoplasm > perinuclear region. Membrane raft. Appears to have a perinuclear, compact and filamentous pattern of expression. Also found in the nucleus of several types of tumor cells. Colocalized with DPP4 in membrane rafts.

图片



15% SDS-PAGE showing ab124575 at approximately 28.8kDa (3µg).

Note: (Molecular weight on SDS-PAGE will appear higher).

Our Abpromise to you: Quality guaranteed and expert technical support

- Replacement or refund for products not performing as stated on the datasheet
- Valid for 12 months from date of delivery
- Response to your inquiry within 24 hours

- We provide support in Chinese, English, French, German, Japanese and Spanish
- Extensive multi-media technical resources to help you
- We investigate all quality concerns to ensure our products perform to the highest standards

If the product does not perform as described on this datasheet, we will offer a refund or replacement. For full details of the Abpromise, please visit <https://www.abcam.cn/abpromise> or contact our technical team.

Terms and conditions

- Guarantee only valid for products bought direct from Abcam or one of our authorized distributors