

Recombinant Human Bax protein ab173026

[3 References](#) [1 图像](#)

描述

产品名称	重组人Bax蛋白	
纯度	> 95 % SDS-PAGE. Greater than 95% as determined by SEC-HPLC and reducing SDS-PAGE.	
内毒素水平	< 1.000 Eu/μg	
表达系统	Escherichia coli	
Accession	Q07812	
蛋白长度	Protein fragment	
无动物成分	No	
性质	Recombinant	
种属	Human	
序列		MGSSHHHHHHSSGLVPRGSHMDGSGEQPRGGGPTSSEQIMKT GALLLQGF IQDRAGRMGGEAPELALDPVPQDASTKKLSECLKRIGDELDS NMELQRMI AAVDTDSPREVFVRVAADMFSDFGNFNWGRVVALFYFASKLVL KALCTKVP ELIRTIMGWTLDFLRERLLGWIQDQGGWDGLLSYFGTPTWQL EHHHHHH
预测分子量	22 kDa including tags	
氨基酸	1 to 171	
标签	His tag C-Terminus , His tag N-Terminus	

技术指标

Our **Abpromise guarantee** covers the use of **ab173026** in the following tested applications.

The application notes include recommended starting dilutions; optimal dilutions/concentrations should be determined by the end user.

应用	HPLC SDS-PAGE
形式	Liquid

制备和贮存

稳定性和存储

Shipped on Dry Ice. Store at -20°C or -80°C. Avoid freeze / thaw cycle.

pH: 7.40

Constituents: 64% Sodium chloride, 3% Sodium phosphate monobasic, monohydrate, 28% disodium;hydrogen phosphate;dodecahydrate

Lyophilized from a 0.2 µm filtered solution

常规信息**功能**

Accelerates programmed cell death by binding to, and antagonizing the apoptosis repressor BCL2 or its adenovirus homolog E1B 19k protein. Under stress conditions, undergoes a conformation change that causes translocation to the mitochondrion membrane, leading to the release of cytochrome c that then triggers apoptosis. Promotes activation of CASP3, and thereby apoptosis.

组织特异性

Expressed in a wide variety of tissues. Isoform Psi is found in glial tumors. Isoform Alpha is expressed in spleen, breast, ovary, testis, colon and brain, and at low levels in skin and lung. Isoform Sigma is expressed in spleen, breast, ovary, testis, lung, colon, brain and at low levels in skin. Isoform Alpha and isoform Sigma are expressed in pro-myelocytic leukemia, histiocytic lymphoma, Burkitt's lymphoma, T-cell lymphoma, lymphoblastic leukemia, breast adenocarcinoma, ovary adenocarcinoma, prostate carcinoma, prostate adenocarcinoma, lung carcinoma, epidermoid carcinoma, small cell lung carcinoma and colon adenocarcinoma cell lines.

序列相似性

Belongs to the Bcl-2 family.

结构域

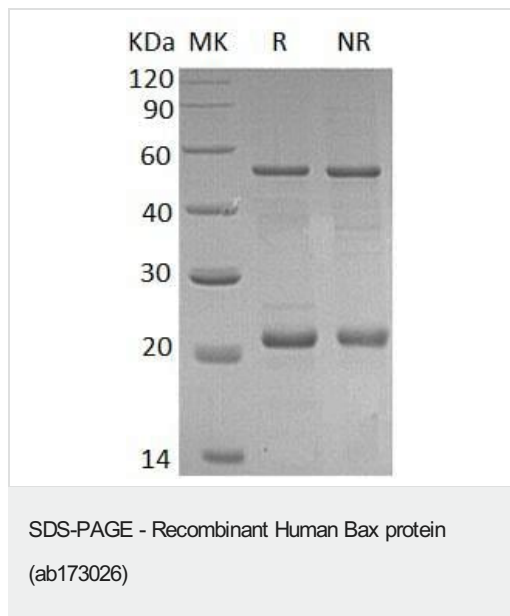
Intact BH3 motif is required by BIK, BID, BAK, BAD and BAX for their pro-apoptotic activity and for their interaction with anti-apoptotic members of the Bcl-2 family.

细胞定位

Cytoplasm and Mitochondrion membrane. Cytoplasm. Colocalizes with 14-3-3 proteins in the cytoplasm. Under stress conditions, undergoes a conformation change that causes release from JNK-phosphorylated 14-3-3 proteins and translocation to the mitochondrion membrane.

图片

SDS-PAGE analysis of ab173026.



Please note: All products are "FOR RESEARCH USE ONLY. NOT FOR USE IN DIAGNOSTIC PROCEDURES"

Our Abpromise to you: Quality guaranteed and expert technical support

- Replacement or refund for products not performing as stated on the datasheet
- Valid for 12 months from date of delivery
- Response to your inquiry within 24 hours
- We provide support in Chinese, English, French, German, Japanese and Spanish
- Extensive multi-media technical resources to help you
- We investigate all quality concerns to ensure our products perform to the highest standards

If the product does not perform as described on this datasheet, we will offer a refund or replacement. For full details of the Abpromise, please visit <https://www.abcam.cn/abpromise> or contact our technical team.

Terms and conditions

- Guarantee only valid for products bought direct from Abcam or one of our authorized distributors