

Recombinant Human BARD1 protein ab114640

1 图像

描述

产品名称	重组人BARD1蛋白
表达系统	Wheat germ
Accession	<u>Q99728</u>
蛋白长度	Protein fragment
无动物成分	No
性质	Recombinant
种属	Human
序列	RRSRLNREQLLPKLFDCYFYLWGTFKHHPKDNLIKLVTAGG GQILSRKP KPDSVDTQTINTVAYHARPDSQRFCTQYIIYEDLCNYHPER VRQGKVKW
预测分子量	37 kDa including tags
氨基酸	658 to 757

技术指标

Our **Abpromise guarantee** covers the use of **ab114640** in the following tested applications.

The application notes include recommended starting dilutions; optimal dilutions/concentrations should be determined by the end user.

应用	Western blot
	ELISA
	SDS-PAGE
形式	Liquid

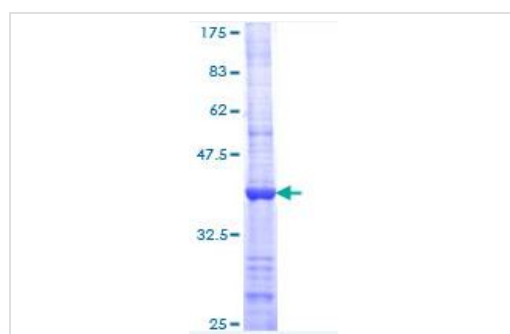
制备和贮存

稳定性和存储	Shipped on dry ice. Upon delivery aliquot and store at -80°C. Avoid freeze / thaw cycles. pH: 8.00 Constituents: 0.3% Glutathione, 0.79% Tris HCl
--------	---

常规信息

功能	Probable E3 ubiquitin-protein ligase. The BRCA1-BARD1 heterodimer specifically mediates the formation of 'Lys-6'-linked polyubiquitin chains and coordinates a diverse range of cellular pathways such as DNA damage repair, ubiquitination and transcriptional regulation to maintain genomic stability. Plays a central role in the control of the cell cycle in response to DNA damage. Acts by mediating ubiquitin E3 ligase activity that is required for its tumor suppressor function. Also forms a heterodimer with CSTF1/CSTF-50 to modulate mRNA processing and RNAP II stability by inhibiting pre-mRNA 3' cleavage.
通路	Protein modification; protein ubiquitination.
序列相似性	Contains 4 ANK repeats. Contains 2 BRCT domains. Contains 1 RING-type zinc finger.
翻译后修饰	Processed during apoptosis. The homodimer is more susceptible to proteolytic cleavage than the BARD1/BRCA1 heterodimer.
细胞定位	Nucleus. During S phase of the cell cycle, colocalizes with BRCA1 into discrete subnuclear foci. Can translocate to the cytoplasm. Localizes at sites of DNA damage at double-strand breaks (DSBs); recruitment to DNA damage sites is mediated by the BRCA1-A complex.

图片



12.5% SDS-PAGE image showing ab114640 Stained with Coomassie Blue.

SDS-PAGE - Recombinant Human BARD1 protein (ab114640)

Please note: All products are "FOR RESEARCH USE ONLY. NOT FOR USE IN DIAGNOSTIC PROCEDURES"

Our Abpromise to you: Quality guaranteed and expert technical support

- Replacement or refund for products not performing as stated on the datasheet
- Valid for 12 months from date of delivery
- Response to your inquiry within 24 hours
- We provide support in Chinese, English, French, German, Japanese and Spanish
- Extensive multi-media technical resources to help you
- We investigate all quality concerns to ensure our products perform to the highest standards

If the product does not perform as described on this datasheet, we will offer a refund or replacement. For full details of the Abpromise, please visit <https://www.abcam.cn/abpromise> or contact our technical team.

Terms and conditions

- Guarantee only valid for products bought direct from Abcam or one of our authorized distributors