

Recombinant Human ATP5O protein ab104549

1 图像

描述

| | |
|-----------|--|
| 产品名称 | 重组人ATP5O蛋白 |
| 纯度 | > 95 % SDS-PAGE. ab104549 is purified using conventional chromatography techniques. |
| 表达系统 | Escherichia coli |
| Accession | <u>P48047</u> |
| 蛋白长度 | Full length protein |
| 无动物成分 | No |
| 性质 | Recombinant |
| 种属 | Human |
| 序列 | MGSSHHHHHSSGLVPRGSHMFAKLVRPPVQVYGIEGRYA TALYSAASKQ NKLEQVEKELLRVAQILKEPKVAASVLNPYVKRSIKVKS LND ITAKERFS PLTTNLINLLAENGRLSNTQGVVSAFSTMMSVHRGEVPCTVT SASPLEEA TLSELKTVLKSFLSQGQVLKLEAKTDPSILGGMIVRIGEKYV DMSVKTKI QKLGRAMREIV |
| 预测分子量 | 23 kDa including tags |
| 氨基酸 | 24 to 213 |
| 标签 | His tag N-Terminus |

技术指标

Our **Abpromise guarantee** covers the use of **ab104549** in the following tested applications.

The application notes include recommended starting dilutions; optimal dilutions/concentrations should be determined by the end user.

| | |
|-----|-------------------------------|
| 应用 | SDS-PAGE Mass Spectrometry |
| 质谱法 | MALDI-TOF |
| 形式 | Liquid |

制备和贮存

稳定性和存储

Shipped at 4°C. Upon delivery aliquot and store at -20°C or -80°C. Avoid repeated freeze / thaw cycles.

pH: 8.00

Constituents: 0.0154% DTT, 0.316% Tris HCl, 40% Glycerol (glycerin, glycerine), 1.16% Sodium chloride

常规信息

功能

Mitochondrial membrane ATP synthase (F(1)F(0) ATP synthase or Complex V) produces ATP from ADP in the presence of a proton gradient across the membrane which is generated by electron transport complexes of the respiratory chain. F-type ATPases consist of two structural domains, F(1) - containing the extramembraneous catalytic core and F(0) - containing the membrane proton channel, linked together by a central stalk and a peripheral stalk. During catalysis, ATP synthesis in the catalytic domain of F(1) is coupled via a rotary mechanism of the central stalk subunits to proton translocation. Part of the complex F(0) domain and the peripheral stalk, which acts as a stator to hold the catalytic $\alpha(3)\beta(3)$ subcomplex and subunit $a/ATP6$ static relative to the rotary elements.

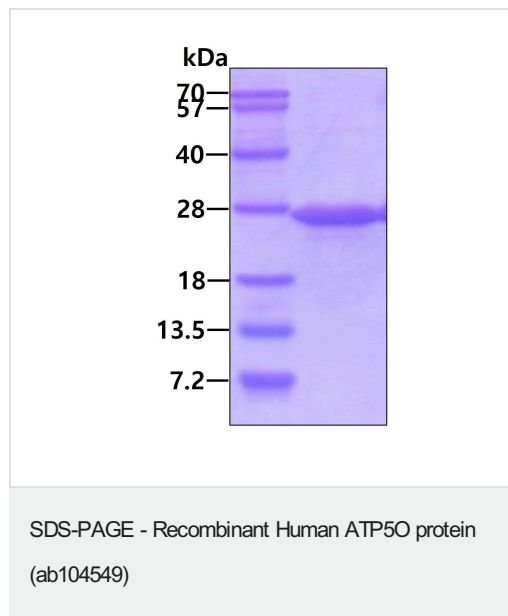
序列相似性

Belongs to the ATPase delta chain family.

细胞定位

Mitochondrion. Mitochondrion inner membrane.

图片



3 μ g by SDS-PAGE under reducing conditions and visualized by coomassie blue stain.

Please note: All products are "FOR RESEARCH USE ONLY. NOT FOR USE IN DIAGNOSTIC PROCEDURES"

Our Abpromise to you: Quality guaranteed and expert technical support

- Replacement or refund for products not performing as stated on the datasheet
- Valid for 12 months from date of delivery

- Response to your inquiry within 24 hours
- We provide support in Chinese, English, French, German, Japanese and Spanish
- Extensive multi-media technical resources to help you
- We investigate all quality concerns to ensure our products perform to the highest standards

If the product does not perform as described on this datasheet, we will offer a refund or replacement. For full details of the Abpromise, please visit <https://www.abcam.cn/abpromise> or contact our technical team.

Terms and conditions

- Guarantee only valid for products bought direct from Abcam or one of our authorized distributors