

Recombinant Human ASIC1 protein ab114681

1 图像

| 描述 | | |
|-----------|---|--|
| 产品名称 | 重组人ASIC1蛋白 | |
| 表达系统 | Wheat germ | |
| Accession | <u>P78348</u> | |
| 蛋白长度 | Full length protein | |
| 无动物成分 | No | |
| 性质 | Recombinant | |
| 种属 | Human | |
| 序列 | MELKAEVEEVGGVQPVSIQAFASSSTLHGLAHIFS YERLSLK RALWALCF LGSLAVLLCVCTERVQYYFHYHHVTKLDEVAASQLTFPAVTL CNLNEFRF SQVSKNDLYHAGELLALLNNRYEIPDTQMADEKQLEILQDKA NFRSFKPK PFNMREFYDRAGHDIRDMLLSCHFRGEVCSAEDFKVVFTRYG KCYTFNSG RDGRPRLKTMKGGTGNGLEIMLDIQQDEYLPVWGETDETSFE AGIKVQIH SQDEPPFIDQLGFGVAPGFQTFVACQEQRLLIYLPWPWGTC KA VTMDSDLD FFDSYSITACRIDCETRYLVENCNCRMVHMPGDAPYCTPEQY KECADPAL DFLVEKDQEYCVCEMPCNLTRYGKELSMVKIPSKASAKYLAK KFNKSEQY IGENILVLDIFFEVLNYETIEQKKAYEIAGLLDIGGQMGLF IGASILTV LELFDYAYEVIKHKLCRRGKCQKEAKRSSADKGVALSLDDVK RHNPCESL RGH PAGMTYAANILPHHPARGTFEDFTC | |
| 预测分子量 | 84 kDa including tags | |
| 氨基酸 | 1 to 528 | |

技术指标

Our **Abpromise guarantee** covers the use of **ab114681** in the following tested applications.

The application notes include recommended starting dilutions; optimal dilutions/concentrations should be determined by the end user.

| | |
|------|--|
| 应用 | Western blot |
| | SDS-PAGE |
| | ELISA |
| 形式 | Liquid |
| 补充说明 | This product was previously labelled as ACCN2. |

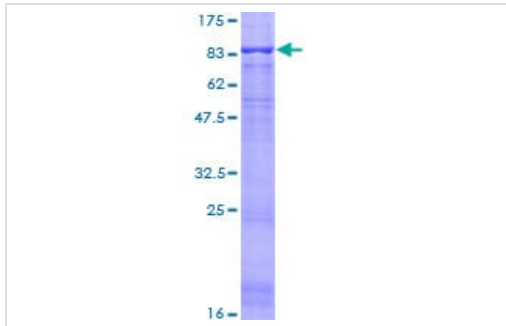
制备和贮存

| | |
|--------|---|
| 稳定性和存储 | Shipped on dry ice. Upon delivery aliquot and store at -80°C. Avoid freeze / thaw cycles. |
| | pH: 8.00 |
| | Constituents: 0.3% Glutathione, 0.79% Tris HCl |

常规信息

| | |
|-------|--|
| 功能 | Cation channel with high affinity for sodium, which is gated by extracellular protons and inhibited by the diuretic amiloride. Also permeable for Ca(2+), Li(+) and K(+). Generates a biphasic current with a fast inactivating and a slow sustained phase. Mediates glutamate-independent Ca(2+) entry into neurons upon acidosis. This Ca(2+) overloading is toxic for cortical neurons and may be in part responsible for ischemic brain injury. Heteromeric channel assembly seems to modulate channel properties. Functions as a postsynaptic proton receptor that influences intracellular Ca(2+) concentration and calmodulin-dependent protein kinase II phosphorylation and thereby the density of dendritic spines. Modulates activity in the circuits underlying innate fear. |
| 组织特异性 | Expressed in most or all neurons. |
| 序列相似性 | Belongs to the amiloride-sensitive sodium channel (TC 1.A.6) family. ACCN2 subfamily. |
| 翻译后修饰 | Phosphorylation by PKA regulates interaction with PRKCABP and subcellular location. Phosphorylation by PKC may regulate the channel. |
| 细胞定位 | Cell membrane. Localizes in synaptosomes at dendritic synapses of neurons. Colocalizes with DLG4. |

图片



SDS-PAGE - Recombinant Human ASIC1 protein
(ab114681)

ab114681 analyzed on a 12.5% SDS-PAGE gel stained with Coomassie Blue.

Please note: All products are "FOR RESEARCH USE ONLY. NOT FOR USE IN DIAGNOSTIC PROCEDURES"

Our Abpromise to you: Quality guaranteed and expert technical support

- Replacement or refund for products not performing as stated on the datasheet
- Valid for 12 months from date of delivery
- Response to your inquiry within 24 hours
- We provide support in Chinese, English, French, German, Japanese and Spanish
- Extensive multi-media technical resources to help you
- We investigate all quality concerns to ensure our products perform to the highest standards

If the product does not perform as described on this datasheet, we will offer a refund or replacement. For full details of the Abpromise, please visit <https://www.abcam.cn/abpromise> or contact our technical team.

Terms and conditions

- Guarantee only valid for products bought direct from Abcam or one of our authorized distributors